



# 2011 Yadkin County Annual Report

## CONTENT

Tax Relief	2
Spending Reduction	3
Transparency	4
Employment	5
Economic Development	6-7
Retail Development	8-9
Public Safety	10-11
Phone Numbers	12-13
Providing Water	14
Energy Savings	14
Education	15
Park Plan	16
Seniors	17
County Government	18-21
Your Tax Bill	22-23
Survey	24

January 1, 2012

Dear Yadkin County Citizens,

As County Commissioners, it is our honor and privilege to present you with the first Yadkin County Annual Report. We take great pride in providing governmental services to you, the citizens of Yadkin County.

This report will highlight the statutorily required reporting of the finances and administrative activities of the County (NCGS 153A-82).

Over the last year we've seized opportunities that have presented themselves by reorganizing resources, reducing the spending by approximately 2 million dollars and cutting the tax rate by 5 cents.

We are beginning to set the standard for how to make government more efficient and provide more services to you by creating more accountability and improving transparency.

In this report, you'll read about projects such as the new jail addition, public safety enhancements, park and recreation renovation, economic and retail development and the County's steps to becoming better stewards of the tax payers money.

Sincerely,

Kevin Austin Frank Zachary David Moxley Marion Welborn Gilbert Hemric





# Tax Relief

Yadkin County provided one of the largest tax cuts in the history of Yadkin County this year as well as the largest tax cut out of all 100 counties.

COUNTY	2010-11	2011-12
Davie	0.62	0.62
Forsyth	0.674	0.674
Iredell	0.445	0.485
Stokes	0.6	0.64
Surry	0.582	0.582
Wilkes	0.65	0.65
Yadkin	0.74	0.69



## Property Tax Cut of 5 cents.



Nevertheless, one could argue it was much needed. Yadkin County still has the highest tax rate compared to all surrounding counties. Having a competitive tax rate among surrounding counties does play a role in economic development.

The tax cut of 5 cents will put approximately **\$1.2 million** collectively back into the pockets of tax payers. This still leaves Yadkin County with the highest tax rate compared to all surrounding counties.

## DID YOU KNOW?

Counties in North Carolina only have two sources of tax revenue: Sales Tax and Property Tax. Property tax makes up the largest portion of revenue.

Yadkin receives the least amount of sales tax per capita than all surrounding counties due to sales tax distribution being based in part on "Point of Sale". Point of Sale means that revenue is sent back to the county where the retail item was purchased.

### HOW TO CALCULATE A TAX BILL

The 2010 tax rate for Yadkin County was 0.74. This means property was taxed at 0.74 cents per \$100 value. If your home's appraised value is \$150,000:

$$\text{Formula: } \$150,000/100 \times 0.74 = \$1,110$$

The 2011 tax rate for Yadkin County is 0.69. This means property was taxed at 0.69 cents per \$100 value. If your home's appraised value is \$150,000:

$$\text{Formula: } \$150,000/100 \times 0.69 = \$1,035$$



# Spending Reduction



## *\$2.1 Million Dollar Cut in Spending*

The past fiscal constraint in fiscal year 2010-11, increased internal controls and Board resolve positioned Yadkin County to continue to serve citizens and welcome new industry by cutting taxes by reversing years of overspending.

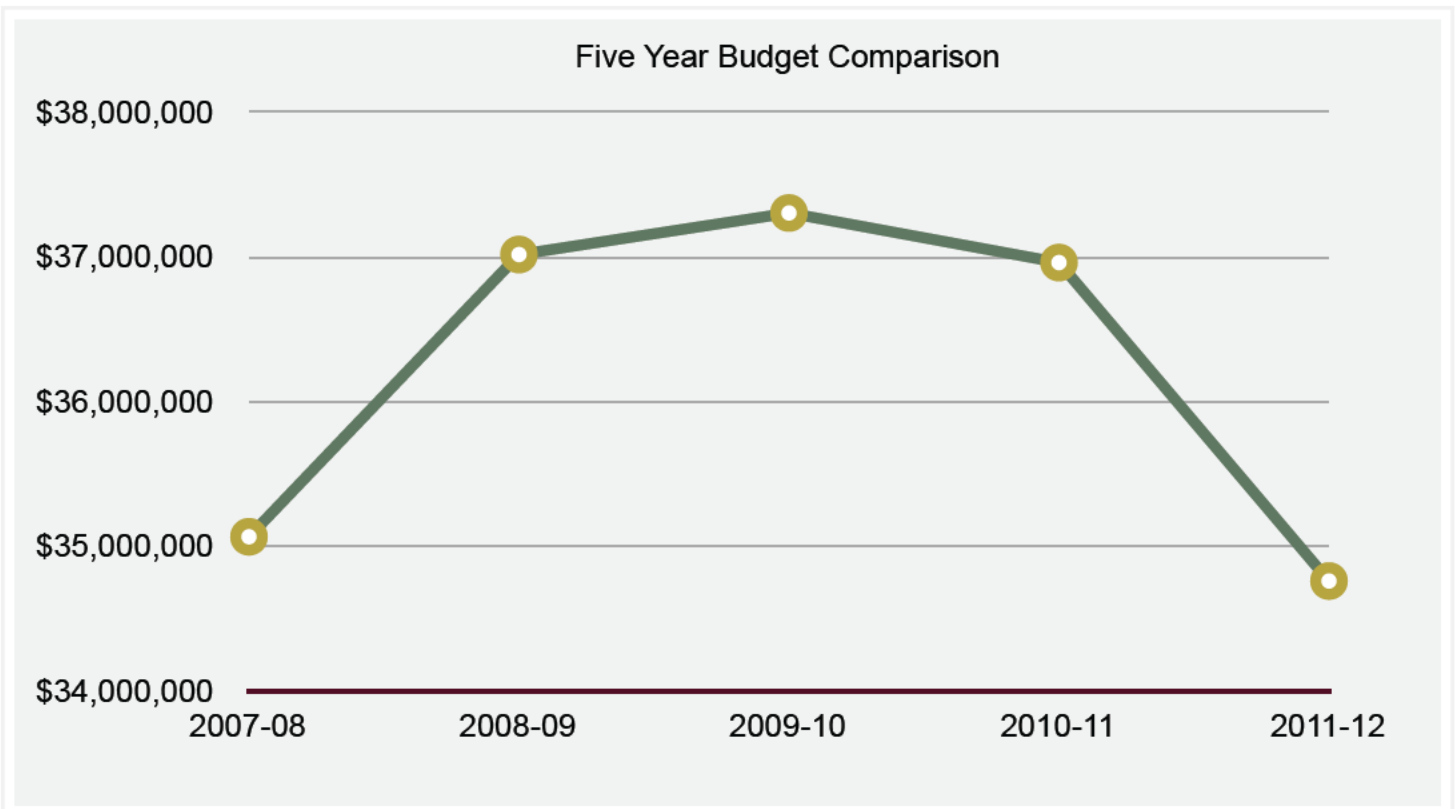
The Board adopted a budget of \$34.7 Million Dollars for fiscal year 2011-12.

Last year's Budget was \$36.7 Million.

This required a \$2.1 Million Cut.



This years budget was approximately 1% or \$307,000 below the FY07-08 Adopted Budget of \$35,068,456 where the tax rate in FY07-08 was higher at 0.76 per \$100 valuation than it is today. This years budget represents a \$7.3 Million cumulative decrease from the last four fiscal years' adopted budgets.





# Government Transparency

In 2011, Yadkin County became the third county out of one hundred counties in North Carolina that have received an "A" grade from [www.transparency.com](http://www.transparency.com).

Transparency creates **ACCOUNTABILITY** and there should be **ZERO SECRETS** when it comes to spending public tax dollars. Taxpayers across the nation have voiced concerns about banking bailouts, debt and out of control spending. Taxpayers want to know where their tax dollars are being spent. Yadkin

County Officials have sought ways to ease the frustration that we all share with government spending. Yadkin County has *reduced the tax rate, reduced spending and increased transparency*. On our web-site we have created many ways to provide information to citizens. Kory Swanson, the Executive Vice President of the John Locke Foundation, commended officials for "advancing the grade from a "D" to an "A", especially since Yadkin is a small county without a lot of resources."

**STATEWIDE AND LOCAL NEWS OUTLETS HAVE TAKEN NOTE OF YADKIN COUNTY'S EFFORTS...**

"Yadkin County is one of only three North Carolina counties that have achieved an "A" in transparency from [NCTransparency.com](http://NCTransparency.com)." (Carolina Journal, October 19, 2011) \*Yadkin was the third county to receive an "A". Chatham County earned an "A" in November.

"Yadkin County takes steps to make spending more transparent...They're working on developing a live streaming checkbook feature that will show when and where money is spent as it happens." (Winston Salem Journal, November 7, 2011)

"What makes Yadkin County's efforts so impressive is not just that it has done this with limited resources, but that officials continue to work on improving the accessibility of resources and alert citizens if something is missing so they don't have to keep looking for it." (Carolina Journal, October 19, 2011)

"Yadkin County's transparency grade of an "A" is unique because the other two counties that currently have an "A" are two of the largest counties in the state, where Yadkin is one of the smaller counties." (Yadkin Ripple, October 26, 2011)

VISIT [www.yadkincountnc.gov](http://www.yadkincountnc.gov), click on **TRANSPARENCY** on the upper right hand side to view:

- Indirect Cost Plans
- Comprehensive Annual Financial Report
- Audit Reports
- Budget Information
- Capital Improvement Plan
- Future Liability for Retirees
- Contracts
- Transportation Improvement Plan
- Employees

- Employee Salary over \$50,000
- Employees by Last Name
- Employees by Department
- Employee Count and Rate of Pay
- Classification and Pay Plan

- Health Expenses
- Annual Financial Information Report



**Yadkin County**

# TRANSPARENCY

**Project**

transparent, trans-par-ent \tran(t)s-'per-ent\ 2 a: free from pretense or deceit b: easily detected or seen through c: readily understood d: characterized by visibility or accessibility of information... (Webster's Dictionary)

**Your (Taxpayer) Money, Your information.**



# EMPLOYMENT IN YADKIN COUNTY



## Farming provides more jobs in Yadkin County than any other industry.

### AGRICULTURAL FACTS

There are approximately 990 farms in Yadkin County that on average are 106 acres totaling 104,970 total acres of farmland.

#### Agricultural Commodities:

Poultry - 6,050,000 birds - #3 in NC  
 Dairy - #3 in NC  
 Soybeans - 26,000 acres  
 Hay - 19,700 acres  
 Corn - 14,000 acres  
 Tobacco - 2,850 acres  
 Beef Cattle - 9,500 cows  
 Wheat - 6,000 acres  
 Grapes - 250 acres (#2 in NC)  
 Hogs - 10,000 hogs



## TOP TWENTY EMPLOYERS

EMPLOYER	EMPLOYMENT	INDUSTRY
Agricultural Industry	3,500	Agricultural
Yadkin County Schools	1,000	Education
Unifi Manufacturing Inc.	500-999	Manufacturing
Lydall Thermal/Acoustical	500-999	Manufacturing
Phillips Van Heusen Corp	500-999	Trade, Transportation & Utilities
Workforce Carolina	250-499	Professional & Business Services
Yadkin County Government	250-499	Public Administration
Yadkin Nursing Care Center	100-249	Education & Health Services
Yadkin Valley Telephone	100-249	Information
Johnsons Modern Electric Co. Inc.	100-249	Construction
The Austin Company	100-249	Manufacturing
Peoplease Corporation	100-249	Trade, Transportation & Utilities
Yadkin Valley Community Hospital	100-249	Education & Health Services
Cracker Barrel Old Country Store	100-249	Leisure & Hospitality
Food Lion	50-99	Trade, Transportation & Utilities
Yadkin Valley Economic Development	50-99	Education & Health Services
Willowbrook Rehabilitation & Care	50-99	Education & Health Services
Ferrell Gas, Inc.	50-99	Trade, Transportation & Utilities
McDonald's	50-99	Leisure & Hospitality
YMCA	50-99	Other Services





## Economic

Yadkin's Towns and County have been fortunate this year to add a number of employment opportunities, increase the tax base and continue building on past successes.



One of the most visible projects has been Chipita America, Inc. which was formally Nonni's Food Company, Inc. Chipita America is

located in the old Unifi Plant 4 facility. The name was changed to align the North American operations with the corporate vision and strategies of the parent company Chipita S.A. Chipita S.A. is a company of Greek origin with a strong international footprint and presence in more than 35 countries. Chipita S.A. is a leader in the sweet and savory snacks markets.

The Chipita America plant produces the product lines of 7days Croissants, New York Style Bagel and Pita chips and Old London Melba Toast. The Chipita America workforce in Yadkin County is comprised of **260 full-time employees** with an additional **100 to 150 temporary employees** as business dictates. Chipita S.A. has invested over \$42 million in building upgrades and equipment within the Yadkinville facility.



Kevin Austin, Gilbert Hemric, Marion Welborn, Frank Zachary and David Moxley take tour of Chipita with Eddie Norman.



# PHILLIPS VAN HEUSEN

The Phillips Van Heusen (PVH) - Jonesville Distribution Center continues to expand with the recent corporate acquisition of the Tommy Hilfiger Brand. Other major brands include PVH, Izod, Calvin Klein, Arrow and Bass. PVH has operated in Yadkin County since 1994 growing to a facility of approximately 600,000 square feet under a 14-acre roof! Currently there are approximately **625 permanent full-time employees** and **150 temporary or part-time per shift** for a total of approximately 950 employees per day.



# Development



In March this year, Lydall Acoustical Thermal announced that they would be creating 170 new jobs in Yadkinville in addition to their 500 jobs currently located in Hamptonville. Lydall Thermal Acoustical, Inc. is focused on providing products to improve customer comfort and safety with its broad thermal and acoustical product line, primarily in the automotive field. Their customers include: Ford, BMW, Toyota, Porsche, Nissan, Audi, Mercedes-Benz, and others.



In April, Unifi celebrated its 40 year anniversary with a dedication of the Yadkinville Facility to late founder, G. Allen Mebane IV. Unifi also opened their new "Repreve" recycling facility in April - a brand from Unifi, creating a 100% recycled fiber. Repreve is used in products manufactured by Nike, Columbia, Polartec, Haggar and others. The Repreve project represents an \$8 Million dollar investment and created 32 new jobs in Yadkin County. Unifi continues to be the largest employer in Yadkin with approximately 960 permanent full-time employees and over 100 contract employees.



"Repreve is a registered trademark of UNIFI, Inc."



Ecovolt Power Corporation, a "green" automotive battery manufacturer, announced in April that it would be locating in East Bend in the old DAC Products building. Governor Perdue came to East Bend to make the official announcement. Ecovolt plans to start operations soon and intends to fill 60 new positions over the next three years.



In November this year The Austin Company hosted an event with North Carolina Labor Commissioner Berry to kick off a new Welder Apprenticeship Program. The program will provide employees with training to enhance their skills to achieve success in the workplace. A 36 month program / curriculum has been developed to provide the needed education and practical experience to become a highly skilled member of the workforce. The Austin Company employs approximately 150 permanent full-time employees and over 25 temporary employees.



Dorsett Technologies was recently recognized as one of the "North Carolina Companies to Watch" by the Council of Entrepreneurial Development. Their primary growth has been in the design, manufacture and installation of computerized monitoring and control systems for commercial and industrial applications. Major clients include NASA's Marshall Space Center, Hill Air Force Base, and Fort Gordon, as well as a number of municipal water and waste-water systems, including the Town of Yadkinville. Dorsett also continues to operate their heating and air conditioning division, which began





# Retail

The availability of retail establishments, those places where we do our daily shopping, not only enhance the quality of life of an area, but also cause governmental budgetary concerns.

<b>YEAR</b>	<b>AMOUNT RECEIVED</b>
2008	\$7,000,000*
2010	\$5,000,000*
<b>LOSS</b>	<b>\$2,000,000*</b>

Yadkin receives the least amount of sales tax per capita than all surrounding counties due to sales tax distribution being based in part on "Point of Sale". Point of Sale means that revenue is sent back to the county where the retail item was purchased.

**QUESTION: Why did we lose \$2 Million Dollars? The Recession?**

**ANSWER: Yes and No. The Recession did decrease local governments local sales tax revenue. However, in Yadkin County much more happened. The general statute changed the way that sales tax is distributed to counties. Prior to the change, Yadkin County received a majority of its sales tax on a PER CAPITA BASIS (PER PERSON) of statewide sales tax. Now Yadkin County receives a majority of its sales on a POINT OF SALE BASIS.**



Retail development in an area is driven by many factors. Traditionally, some of these factors are population, traffic and travel patterns, as well as the availability of land near existing commercial areas in addition to the required amenities of public water, sewer, natural gas, and electric service. Today retail development is influenced by these same factors as well as the availability of Broadband Internet service and visibility and access to the traveling public.

With all these factors in mind, and with a renewed energy, Yadkin County has become involved in the area of retail development. In many more populated areas of North Carolina retail development seems to be determined by luck or by the desires of private developers. Due to the population in Yadkin County and our existing shopping and traffic patterns, Yadkin County has had limited success in the past 10 to 15 years in attracting the retail development that many would like to see. As a result, the Board of Commissioners feel it is necessary to do whatever we can to stimulate the retail economy in Yadkin County.

To accomplish this stimulation of retail development, the County has enhanced its relationship with the Yadkin County Chamber of Commerce, the Tourism Development Authority, the Economic Development Council, the Town Boards and Mayors in the County. Just recently, the Economic Development Council developed a fast track document that outlines all the permits and licenses required to begin a business in Yadkin County.

\*Approximate



# Development



In addition to reducing the red tape for start up businesses, in the last several months we have directed County Management to work diligently in a confidential manner to locate several suitable properties that would be attractive to developers with whom we have just started forming a relationship. The developers represent national retail chain stores. Properties have been identified and conversations have taken place to facilitate retail development. Further, the county will also be working with the North Carolina Department of Commerce, the Department of Transportation and municipalities to ensure that the required infrastructures (water, sewer, internet, streets and turn lanes) are available to the retailer who may be willing to locate on identified properties.



Yadkin County is now in the agribusiness and agritourism industries with the establishment of 14 wineries. These attractions, natural beauty and close proximity more urbanized areas in North Carolina provide a good base on which we can build more retail economy.

This is a renewed initiative that will take time and careful planning to create not only retail growth, but SMART RETAIL GROWTH that respects and honors the long standing rural agriculture atmosphere we all enjoy.

**QUESTION: Is Wal-Mart coming to Yadkin County?**

**ANSWER:** Wal-Mart is one of the many retailers we are targeting. We are working hard to create a desirable attractive environment for many national retailers. Our goal is to welcome, facilitate and foster new retail business to improve the quality of life for all citizens in Yadkin County. Our vision is to encourage a retail base that will provide everyone a place to purchase shoes, clothing and accessories without spending \$5 to \$15 dollars in gas every time we need to purchase basic necessities. Even if you live closer to one of our bordering counties retail centers, having increased retail in Yadkin County would provide the option to plan larger purchases in the county to ensure that the sales tax we are all forced to pay by the State at least comes back to Yadkin.





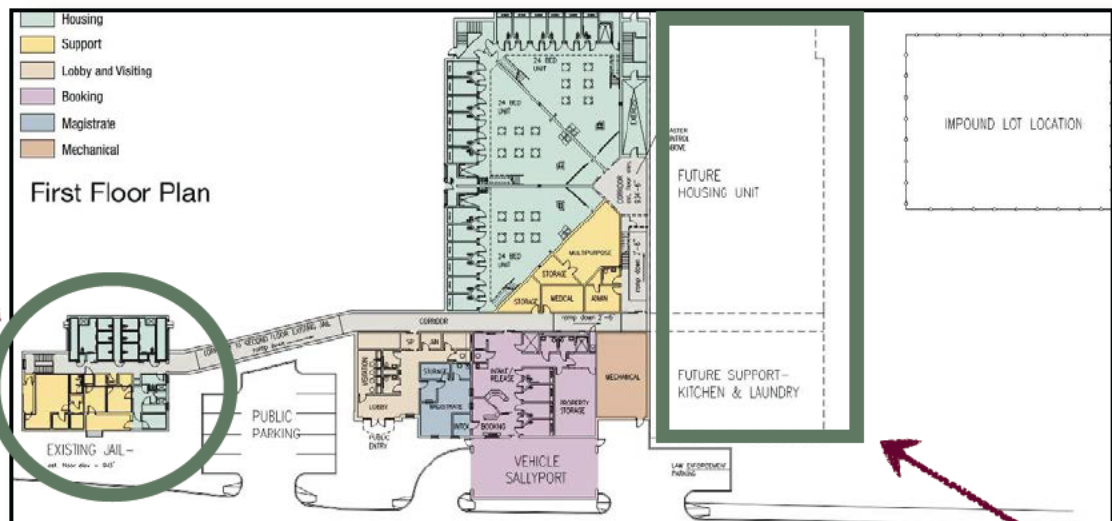
## NEW JAIL ADDITION

The estimated cost for the new jail addition is approximately \$5.9 Million

Dollars. The current jail facility will be utilized to house approximately twelve female inmates and twelve male inmates, commissary facilities, and general storage. The new jail addition will be used to house seventy-two male inmates. The estimated completion date is Spring 2013. Construction should begin in early spring

of 2012. Once the jail addition is completed, Yadkin County will have the capacity to house ninety-six (96) inmates. Currently, the average daily population ranges from 40 to 70 inmates. The addition is being built with the capacity to add ninety-six (96) additional beds in the next ten to fifteen years.

Current  
Jail  
Facility



Future (10-15  
Year) Expansion



# Safety



## Enhanced E-911

### CALL 911 FOR EMERGENCIES.

**Yadkin County Sheriff Ricky Oliver** oversees the county's recently ENHANCED E-911. The Communications Division of the Sheriff's Office utilizes the national "best practices" approach when taking calls and sending an agency to your location in your time of need.



Communications is staffed by Public Safety Telecommunicators professional trained through the National Academy of Emergency Dispatch in Emergency Fire (EFD) and Emergency Medical Dispatch (EMD). Entering approximately 36,000 calls per year into the county's Computer Aided Dispatch (CAD) and sending help has earned the honor of being "THE FIRST, FIRST RESPONDERS" to your emergencies.



Continued investment in ENHANCED E-911 in the last year provides the county:

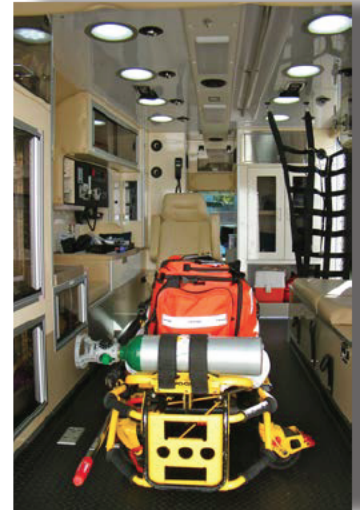
- New Computer Aided Dispatch (CAD)
- Major Audio / Radio recorder installation
- New wiring and installation of console furniture
- Replacement of previous analog E-911 system and outdated technology with a new geo-diverse (redundant and dual site capable) E-911 system.

**What does this mean?** *This means that Yadkin County citizens are served with the most up to date technology available to ensure that when you have an emergency someone is available 24 / 7 to answer your call and dispatch the appropriate responders in the fastest and most efficient way possible.*



## Advanced Emergency Services

All of our county ambulances are staffed to the Paramedic level and stock the latest medical equipment in the industry. In 2011, EMS upgraded its cardiac monitors to the ZOLL E Series on a lease agreement, in a cost savings effort. We now carry the latest in cardiac technology. Our county EMS is in the process of adding a new skill to our cardiac resuscitation efforts. We are in the implementation phase of Post Arrest Induced Hypothermia for cardiac arrest patients. This is a new procedure to increase the survivability of a person that has had a cardiac arrest. We also are adopting the 2011 North Carolina College of Emergency Physicians (NCCEP) Document. These are the latest and most advanced treatment protocols available. They are researched and written by the NCCEP.



The EMS Advanced Education Institution is responsible for the continuing education of all pre-hospital medical providers. As a result the responder's medical credentials are able to be renewed. To accomplish this, our medical personnel (EMS, Fire, and Rescue) have spent more than 4352 hours in training classes, most of which is volunteer.





## COURT SYSTEM

Clerk of Superior Court	(336) 679-3600
District Attorney	(336) 679-3610
NC Attorney General	(919) 716-6400
Probation	(336) 679-8481
Magistrate	(336) 679-3619

## TOWNS

Boonville Town Hall	(336) 367-7941
East Bend Town Hall	(336) 699-8560
Jonesville Town Hall	(336) 835-3426
Yadkinville Town Hall	(336) 679-8732

## SCHOOLS

Administrative Offices	(336) 679-2051
Boonville Elementary	(336) 367-7021
Courtney Elementary	(336) 463-5510
East Bend Elementary	(336) 699-3989
Fall Creek Elementary	(336) 699-8257
Forbush Elementary	(336) 699-8447
Forbush Middle	(336) 961-6360
Forbush High	(336) 961-4644
Jonesville Elementary	(336) 835-3201
Starmount Middle	(336) 468-6833
Starmount High	(336) 468-2891
Surry Community College	(336) 679-4600
West Yadkin Elementary	(336) 468-2526
Yadkin Early College	(336) 679-4600
Yadkin Success Academy	(336) 679-4888
Yadkinville Elementary	(336) 679-8921

## COUNTY GOVERNMENT

Animal Control	(336) 677-2500
Building Codes / Inspections	(336) 679-4233
Central Permitting	(336) 679-4233
Cooperative Extension	(336) 679-2061
County Manager	(336) 679-4200
Economic Development	(336) 679-2200
Elections	(336) 679-4227
Education	(336) 679-2051
Environmental Health	(336) 679-4244
Emergency Services	(336) 679-4232
Fire Marshall	(336) 679-4231
Finance	(336) 679-4338
GIS	(336) 679-4243
Information Technology	(336) 679-6005
Health Department	(336) 679-4203
Jail	(336) 849-7840
Land Records	(336) 679-4224
Landfill	(336) 849-7720
Mental Health	(888) 235-4673
Parks & Recreation	(336) 679-4228
Planning / Zoning	(336) 679-4243
Register of Deeds	(336) 679-4225
Road Signs (Damaged or Missing)	(336) 679-4243
Social Services	(336) 679-4210
Soil & Water	(336) 679-8378
Sheriff	(336) 679-4217
Tax Administration	(336) 679-4221
Tax Collection	(336) 679-4223
Tax Reappraisal	(336) 679-2308
Veterans	(336) 677-2500

## PUBLIC SAFETY

### EMERGENCY SERVICES

Yadkin Emergency Services	(336) 679-4232
Yadkin EMS (Ambulance)	(336) 679-4232
Yadkin Fire Marshall	(336) 679-4231

### FIRE DEPARTMENTS

Arlington FD	(336) 835-6184
Boonville FD	(336) 367-3018
Buck Shoals FD	(336) 468-2112
Courtney FD	(336) 463-5551
East Bend FD	(336) 699-8663
Fall Creek FD	(336) 699-3950
Forbush FD	(336) 961-8376
Jonesville FD	(336) 835-6438
Lone Hickory FD	(336) 463-5468
West Yadkin FD	(336) 468-2844
Yadkinville FD	(336) 679-8691

### FORESTRY

Forestry	(336) 679-4244
----------	----------------

### LOCAL POLICE / LAW ENFORCEMENT

Boonville PD	(336) 367-7828
East Bend PD	(336) 699-8560
Jail	(336) 849-7840
Jonesville PD	(336) 835-5020
Sheriff's Office	(336) 679-4217
Yadkinville PD	(336) 679-2863

### RESCUE SQUAD

Yadkin Rescue Squad	(336) 679-2430
---------------------	----------------

## YADKIN COUNTY PROVIDES MANY SERVICES TO SENIORS

by funding approximately \$185,000 a year to 3 senior centers and YVEDDL.

There are three senior centers in Yadkin County located in East Bend, Jonesville, and Yadkinville. Each center provides monthly activities for Senior Citizens. Call your closest Senior Center today to find out about activities.

**East Bend Senior Center**

(336) 699-5100

**Yadkin Valley (Jonesville) Senior Center**

(336) 526-1087

**Yadkinville Senior Center**

(336) 679-3596

# YADKIN COUNTY COMMISSIONERS



Commissioner

**MARION**

**WELBORN**

2852 Round Hill Road  
Boonville, NC 27011  
(336) 961-2851

[mwelborn@yadkincountnc.gov](mailto:mwelborn@yadkincountnc.gov)



Commissioner

**DAVID**

**MOXLEY**

2708 Farris Road  
Boonville, NC 27011  
(336) 468-4411

[dmoxley@yadkincountnc.gov](mailto:dmoxley@yadkincountnc.gov)



Chair to the Board

**KEVIN**

**AUSTIN**

2100 Hoots Road  
Yadkinville, NC 27055  
(336) 426-8337

[kaustin@yadkincountnc.gov](mailto:kaustin@yadkincountnc.gov)



Vice-Chair to the Board

**FRANK**

**ZACHARY**

1342 Cross Creek Drive  
Yadkinville, NC 27055  
(336) 849-4076

[fzachary@yadkincountnc.gov](mailto:fzachary@yadkincountnc.gov)



Commissioner

**GILBERT**

**HEMRIC**

1800 Hemric Mtn. Road  
Hamptonville, NC 27020  
(336) 466-1921

[ghemric@yadkincountnc.gov](mailto:ghemric@yadkincountnc.gov)



## PUBLIC SAFETY

### STATE POLICE / LAW ENFORCEMENT

NC Alcohol Law Enforcement	(828) 466-5550
NC Alarm System Licensing	(919) 788-5320
NC Criminal Justice Training	(919) 661-5980
NC Corrections	(919) 716-3700
NC Highway Patrol STATE	(919) 733-7952
NC Highway Patrol LOCAL	(336) 835-5121
NC Medicaid Fraud Unit	(919) 881-2320
NC Private Protective Services	(919) 788-5320
NC SBI	(919) 662-4500
NC Sheriff Standards	(919) 662-4515

### FEDERAL LAW ENFORCEMENT

ATF Alcohol, Tobacco, Firearms	(336) 235-4900
FBI (Local)	(704) 672-6100
DEA Drug Enforcement Agency	(202) 305-8500
US Marshall	(336) 332-8700

## LIBRARIES

Boonville	(336) 367-7737
East Bend	(336) 699-3890
Jonesville	(336) 835-7604
Yadkinville	(336) 679-8792

## STATE GOVERNMENT

### NC Governor

Bev Perdue	(800) 662-7952
------------	----------------

### NC State Sen.

Don East	(919) 733-5743
----------	----------------

### NC State Rep.

Darrell McCormick	(919) 733-5654
NC Driver License Office	(336) 679-3232
NC Employment Security Commission	(336) 679-4079
NC Highway Patrol	(919) 733-7952
NC License (TAG) Office	(336) 679-2333
NC Labor	(800) 625-2267
NC National Guard	(919) 664-6242
NC Dept. Revenue	(877) 252-3052
NC Transportation (Local)	(336) 679-2242
NC Transportation (State)	(877) 368-4968

## FREQUENT NUMBERS

### CHAMBER OF COMMERCE

(336) 679-2200

Adult Program Office	(336) 679-3385
American Cancer Society	(336) 501-2726
American Red Cross	(336) 724-0511
Arts Council	(336) 679-2941
Better Business Bureau	(336) 725-8348
Cancer Services, Inc.	(336) 679-4462
Child Support Assistance	(336) 679-4210
Council of Government	(336) 761-2111
Christian Ministries (East Bend)	(336) 699-4544
Christian Ministries (Yadkinville)	(336) 677-3080
Christian Ministries (Jonesville)	(336) 526-1089
Domestic Violence	(336) 679-2072
Grace Clinic	(336) 835-1467
Historical Society	(336) 679-2702
Hospital (Yadkin Valley Com.)	(336) 679-2041
Humane Society	(336) 463-4990
Job Link	(336) 679-7833
Juvenile Justice	(336) 679-2541
Juvenile Services	(336) 679-2541
Hospice (Mountain Valley)	(336) 679-2466
Marriage Licenses	(336) 679-4225
Meals on Wheels	(336) 367-7251
New Horizons	(336) 677-3843
New Hope Pregnancy Care	(336) 679-7101
PART	(336) 662-0002
Poison Control	(800) 222-1222
Senior Services	(336) 679-2740
Senior Centers	
East Bend	(336) 699-5100
Jonesville	(336) 526-1087
Yadkinville	(336) 679-3596
SCAN (Stop Child Abuse Now)	(336) 679-6135
Smart Start	(336) 679-7833
YVEDDI	(336) 367-7251
YMCA	(336) 679-7962
Vocational Rehab	(336) 679-4044
United Way	(336) 679-4462

## FEDERAL GOVERNMENT

### US Senator Richard Burr

District Office	(828) 350-2437
-----------------	----------------

### US Senator Kay Hagan

District Office	(919) 856-4630
-----------------	----------------

### US Congresswoman Virginia Foxx

District Office	(866) 677-8968
-----------------	----------------

Consumer Safety	(800) 504-2772
Farm Service Agency Local	(336) 679-8821
FDA	(888) 463-6332
Internal Revenue Service	(800) 829-1040
Labor Department	(866) 487-2365
Medicaid	(919) 855-4100
Medicare	(800) 633-4227
Social Security	(877) 402-0828
Veterans Affairs	(800) 827-1000
US Postal Service	
Boonville	(336) 367-7850
East Bend	(336) 699-3179
Jonesville	(336) 835-5047
Hamptonville	(336) 468-2919
Yadkinville	(336) 679-8310

## UTILITIES

Century Link	(888) 999-7756
Duke Power	(800) 827-5118
Energy United	(336) 751-2136
Frontier Natural Gas	(800) 537-2545
Surry - Yadkin EMC	(336) 386-8241
Time Warner	(866) 586-4034
Yadtel	(336) 463-5022
Water (Boonville)	(336) 367-7941
Water (East Bend)	(336) 699-8560
Water (Jonesville)	(336) 835-4068
Water (Yadkinville)	(336) 679-2990
Water (Yadkin County)	(336) 679-4200

**SEE PAGE 17 FOR IN-HOME  
AIDE AGENCIES AND  
ADDITIONAL SENIOR CITIZEN  
INFORMATION**

# LARGE PRINT?

If you would like a Yadkin County Phone Number  
List in LARGE PRINT call (336) 679-4200.



## Providing Water

For the last twenty years Yadkin County has studied county wide water. For years Yadkin County has operated under the premise that it is assisting towns to provide water to areas of development. **North Carolina regulations have “forced” Yadkin County into the water business.** Currently the County operates two water systems: (1) HWY 21 Water Line and (2) Courtney Water Line.



The County has retained Davis-Martin-Powell & Associates, Inc. to complete a Comprehensive Enterprise Business Solution (EBS) for Countywide Water. The North Carolina Rural Center will provide grant funding to match the counties \$36,000 for the EBS. The project will develop an EBS for countywide water that will provide scalable, easy to manage infrastructure implementation to enhance retail/economic development and the quality of our lives.

The EBS will evaluate the role that Yadkin County will undertake within the region, including possible water treatment facilities and partnerships with towns and counties providing a road map necessary to implement what most likely will entail a multi-year potential project list establishing policies and planning principles.

Davis-Martin-Powell & Associates will create hydraulic modeling and preliminary engineering designs for water construction, delivery and enterprise fund solutions that will not utilize tax dollars, but rather user fees for feasible countywide water.



## Energy Plan

In September of this year the Yadkin County Board of Commissioners adopted a Strategic Energy Management Plan. The purpose of the plan is to reduce energy consumption thereby reducing the cost of energy and to position the County to apply for federal, state and private grants to rehabilitate county facilities to decrease the use of electricity, water, natural gas, gasoline and oil. The plan requires that County staff create an Energy Sustainability Committee to craft an energy policy to implement the Strategic Plan.



### TECHNICAL ANALYSIS:

The county will be conducting ongoing energy audits, assessing energy consumption by inputting square footage of buildings with utility bill measurements (therms, BTU's etc.) consumed over an annual billing cycle to derive the energy consumed per square foot of building space as an output measure of energy consumption.

### BEHAVIOR MODIFICATION:

The policy will identify and address what the industry refers to as “Low-Hanging Fruit.” This includes setting policy that modifies behavior, much like we all do in our own homes to reduce our power bill. This will likely eliminate space heaters, mini-refrigerators and individual coffee machines that incrementally consume large amounts of energy over time. Just imagine 50 space heaters running in your home. What would it cost?

### BUILDING MODIFICATION:

The policy addresses investing in technology to implement motion detected light switches for bathrooms, courtrooms, and general gathering areas, centrally controlled heating and cooling controls, insulation and converting T12 light fixtures to T8 or T5 fixtures. Building modification will only be implemented after detailed cost analysis and further audits are performed to ensure savings. In other words we are not going to be “penny wise and pound foolish.”

**QUESTION:** WHY IS THE COUNTY DOING THIS?

**ANSWER:** TO REDUCE COUNTY SPENDING ON ENERGY BILLS.



# EDUCATION

The County provides approximately \$7,000,000 a year to local education capital and operations. A portion of this funding is used for supplemental teacher pay. During the recession the county has not had to resort to staggering budget cuts of 10 to 15 percent due to increased fiscal control and conservative management of lottery and ADM funds. In fact over the last three years the schools have managed an approximate 4% cut. However, with recent ADM fund investments in capital to secure elementary schools, the County cuts have been less than 2%. Approximately Twenty percent (20%) of your property tax money goes to education.

The Yadkin County School District is nestled in the foothills of the beautiful Blue Ridge Mountains of North Carolina. Serving approximately 6,000 students in grades Pre-Kindergarten through grade 12 in fourteen schools, the Yadkin County School District includes eight elementary schools; two middle schools; two traditional high schools; one alternative school and the Yadkin County Early College High School. Yadkin County Schools are rich in academics, athletics, the arts and numerous extra-curricular activities successes. Educators welcome the opportunity to serve students and parents living in our many communities throughout Yadkin County.

Yadkin County Schools are governed by the following principles: **VISION STATEMENT:** Creative thinkers today, innovative leaders tomorrow. **MISSION STATEMENT:** Yadkin County Schools, through collaboration and support, will prepare globally competitive citizens who possess critical thinking and problem solving skills that maximize their potential. **MOTTO:** Learn Today, Lead Tomorrow.

## YADKIN COUNTY SCHOOL BOARD

Mr. Frank Brown, Chairman

Mr. Howard McKnight, Vice-Chair

Mr. Rex Baity

Dr. Hazel Brown

Mr. Joe Dezern

Ms. Diane Hampton

Mr. Larry Vestal

## 2012-2013 YADKIN COUNTY SCHOOLS CALENDAR

July 2012						
S	M	T	W	T	F	S
1	2	3	H	5	6	7
8	9	10	11	12	13	14
15	16	17	18	19	20	21
22	23	24	25	26	27	28
29	30	31				

August 2012						
S	M	T	W	T	F	S
			1	RW	RW	4
5	WD	WD	8	9	10	11
12	13	14	15	16	17	18
19	20	21	22	23	24	25
26	27	28	29	30	31	

September 2012						
S	M	T	W	T	F	S
						1
2	H	4	5	6	7	8
9	10	11	12	13	14	15
16	✓	18	19	20	21	22
23	24	25	26	27	28	29
30						19

October 2012						
S	M	T	W	T	F	S
	1	2	3	4	5	6
7	8	9	10	✗	WD	13
14	15	16	17	✓	19	20
21	22	23	24	25	26	27
28	29	30	31			

November 2012						
S	M	T	W	T	F	S
				1	2	3
4	5	6	7	8	9	10
11	H	13	14	15	16	17
18	19	20	AL	H	H	24
25	26	27	28	29	30	

December 2012						
S	M	T	W	T	F	S
						1
2	3	4	5	6	7	8
9	10	11	12	13	14	15
16	17	18	19	✗	WD	22
23	H	H	H	AL	AL	29
30	AL					14

January 2013						
S	M	T	W	T	F	S
		H	WD	3	4	5
6	7	8	9	10	11	12
13	14	15	16	17	18	19
20	H	22	23	24	25	26
27	28	29	30	31		

February 2013						
S	M	T	W	T	F	S
					1	2
3	4	5	6	✓	8	9
10	11	12	13	14	15	16
17	18	19	20	21	22	23
24	25	26	27	28		

March 2013						
S	M	T	W	T	F	S
					1	2
3	4	5	6	7	✗	9
10	RW	12	13	14	15	16
17	18	19	✓	21	22	23
24	25	26	27	28	H	30
31						19

April 2013						
S	M	T	W	T	F	S
	AL	AL	AL	AL	AL	6
7	8	9	10	11	12	13
14	15	16	17	18	19	20
21	22	23	24	25	26	27
28	29	30				

May 2013						
S	M	T	W	T	F	S
			1	2	3	4
5	6	7	8	9	10	11
12	13	14	15	16	17	18
19	20	21	22	23	✓	25
26	H	WD	WD	AL	31	

June 2013						
S	M	T	W	T	F	S
						1
2	3	4	5	6	7	8
9	10	11	12	13	14	15
16	17	18	19	20	21	22
23	24	25	26	27	28	29

### Calendar Notes:

\*Elementary and Middle School Parent Conferences:  
- October 18

\*High School Parent Conferences:  
- September 17  
- February 7

\*High School - Second Semester begins: January 3  
-

### \*Early Release Days:

- September 17  
- October 18  
- December 20  
- February 7  
- March 20 - Prof. Dev.  
- May 24

### \*Teachers-Grades by 3:00pm on:

- October 12  
- January 2  
- March 11

\*Freshman Orientation/Open House  
Date for all schools: August 6

\*District Professional Development:  
Elementary/Middle: 9/17, 2/7 & 3/11  
High School: 10/18 & 3/11

\*Convocation/Professional Development:  
8/3

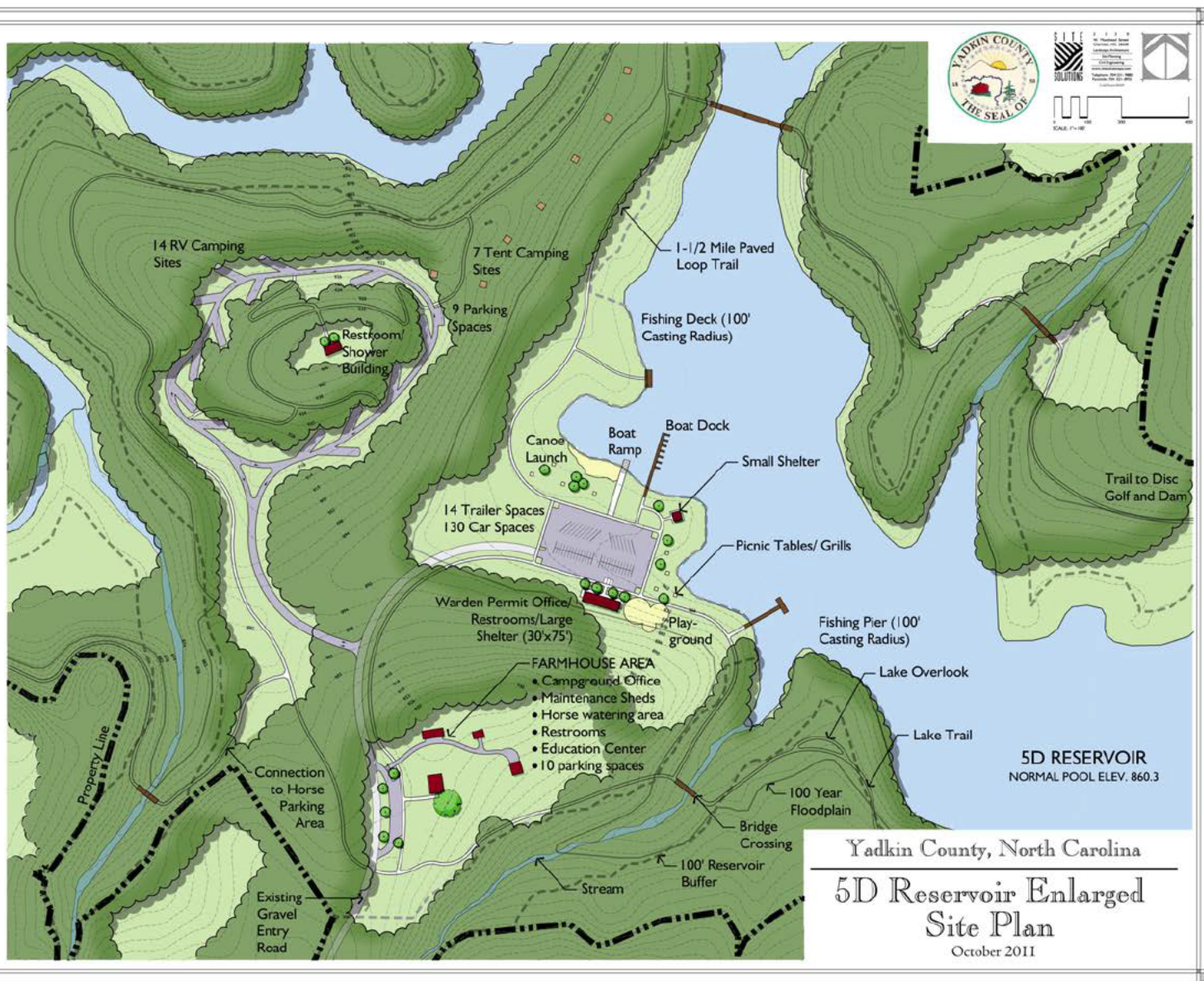
\*Yadkin County Board of Education determines make up days and any calendar changes.

### Calendar Key:

	Student Day
⌚	Early Release
✗	End of Grading Period
✓	Parent Conferences
OW	Optional Workday
RW	Required Workday
H	Holiday
AL	Annual Leave
	Number of Student Days
Adopted by YCS BOE on 10/3/11	



# PARK PLAN



## Ten (10) Year Plan for the 5D Reservoir

The Board of Commissioners voted to create a comprehensive recreation system-wide plan (Master Plan) and two site specific plans this year. The plan is complete. First, we have already begun improvements at the current County Park including: erosion control, renovation of walking track, and ball field renovation. A new play ground will be installed in the next few months. **Second, the County plans to create a passive / natural park at the 5D Reservoir as shown above.** We are currently constructing a road that will provide access to the park entrance. Some of the possible attractions may include the following; primitive campground (Boy Scouts / Girl Scouts), walking trail, nature trails, horseback riding trail & mountain bike trail, fishing, canoes, duck hunting, picnic areas and nature study.

**QUESTION:** Why did Yadkin County hire a company to create a comprehensive recreation system-wide plan (Master Plan) and two site-specific plans?

**ANSWER:** To enable Yadkin County to apply for a \$500,000 (Half-Million Dollar) Grant from the North Carolina Parks and Recreation Trust Fund Grant.

**QUESTION:** When will the County Apply for the grant?

**ANSWER:** The County will apply for the \$500,000 dollar grant in January 2012.

**QUESTION:** What is the benefit of improving and maintaining County Parks?

**ANSWER:** Quality of Life and Economic Development. The number and condition of parks provide more than just enhanced quality of life. Many studies and real life examples prove that businesses look at parks when looking for new areas to move or grow their companies.



# SENIOR CITIZENS

**YADKIN COUNTY PROVIDES MANY SERVICES TO SENIORS** by funding approximately \$185,000 a year to 3 senior centers and YVEDDI. Each center provides monthly activities for Senior Citizens. Call your closest Senior Center today to find out about activities.

## SERVICES AVAILABLE

*Caregivers Classes	*Congregate and Home
*General and Medical	Delivered Meals
Transportation	*Health Screening
*Home Repair / Weatherization	*Housing
*Insurance Counseling	*Information and Referral
*Job Training / Placement	*Legal Services
*Senior Games	*Silver Arts
*Social Security Information	*Support Groups
*Tax Preparation	*Telephone Reassurance

**QUESTIONS CALL YVEDDI at**  
(336) 367-3637

## IN-HOME AIDE AGENCIES

Added Touch	(336) 677-3869
Amazing Grace	(336) 835-1362
American Healthcare Services	(336) 789-2273
Bayada Nurses, Inc.	(336) 835-8500
Care South, Inc.	(336) 468-1710
Carolina Select Home Care	(336) 527-4955
Champion Family Healthcare	(336) 608-4612
Generations Home Health	(336) 372-1755
Living Waters Home Care	(336) 372-5978
Maxim Healthcare Services	(336) 760-8884
Metro Home Care	(336) 272-0477
New Horizons	(336) 677-3843
Quality Care Senior Services	(336) 258-2306
Rescare Home Care Services	(336) 765-0673
Sunny Home Care	(336) 766-2411
Tender Touch Home Care	(336) 526-8866
Touched By Angels	(336) 679-4490
Unique Home Care	(877) 650-4364
Yadkin Senior Services	(336) 679-2740

## EAST BEND SENIOR CENTER

(336) 699-5100

Rhonda Beavers

HOURS: 8:00am - 5:00pm, Monday - Friday

## YADKINVILLE SENIOR CENTER

(336) 679-3596

Lavania Gilliam

HOURS: 8:00am - 5:00pm, Monday - Friday

## YADKIN VALLEY (JONESVILLE) SENIOR CENTER

(336) 526-1087

Lisa Money

HOURS: 8:00am - 5:00pm, Monday - Friday



## RETIRED AND SENIOR VOLUNTEER PROGRAM

Recruits, places, and supports older citizens in humanitarian pursuits affecting measurable improvements in community life in Davie, Surry, and Yadkin Counties. RSVP serves to "engage persons 55 and older in volunteer service to meet critical community needs and to provide a high quality experience that will enrich the lives of volunteers". RSVP fulfills this function by matching recruited seniors with service providers whose missions are compatible with these aspiring volunteers' interests, abilities, and desired levels of challenge. RSVP provides enrolled volunteers with technical support, insurance coverage, limited mileage reimbursement, and recognition for their contributions.

RSVP receives fiscal support from the Corporation for National Service, county governments, local United Fund and United Way agencies, and fund-raising initiatives.

## Gilda Pruitt

YVEDDI RSVP Director (Yadkin County)  
533 N. Carolina Avenue, Highway 601 N  
Boonville, NC 27011

**336-367-3526**





## ADMINISTRATION

The County Manager is the chief administrator of county government. The County Manager serves at the pleasure of the County Commissioners and implements policy as directed by the Board. In Yadkin County both Finance and Human Resources are a function of Administration.

## ANIMAL CONTROL

Animal Control responds to approximately 2,500 calls a year. This year the Yadkin Animal Responsibility Committee was created to support a positive climate for animals. Adoptions have increased by over 100%.

	<u>2010</u>	<u>2011</u>
Animals returned to owner	49	92
Animals adopted	55	126

Recently Yadkin County's shelter became a lethal injection only shelter. All other methods of euthanasia are prohibited.

## COOPERATIVE EXTENSION

Cooperative Extension gives our county's residents easy access to the resources and expertise of NC State University and NC A&T University. Through educational programs, publications, and events, Extension agents deliver unbiased, research-based information to Yadkin County citizens. In the last year Cooperative Extension has played an instrumental role in starting a Farmers Market that provides opportunities for residents to purchase locally grown produce from other residents.

## ELECTIONS

The Board of Elections holds elections every year. Federal, State and County every other (EVEN) year and Municipal every other (ODD) year. The Board of Elections registers voters, holds filing for candidates, prepares ballots, tests machines and provides training for precinct workers. Yadkin County has approximately 23,345 registered voters including 13,309 Republicans, 5,055 Democrats, 4,956 Unaffiliated and 25 Libertarians.

## EMERGENCY SERVICES

See page 11 for more information.

Emergency Services contains three (3) divisions: Emergency Management, Emergency Medical Services, and Fire Marshal.

**EMERGENCY MANAGEMENT (EM):** EM provides citizens 24/7 coverage for emergencies involving environmental spills and natural disasters.

**EMERGENCY MEDICAL SERVICES (EMS):** EMS Provides citizens 24/7 ambulance care responding to approximately 5,300 calls a year.

**FIRE MARSHALL:** The Fire Marshal conducts mandated state fire inspections and fire investigations. Our inspections have increased 40% from last year.

## PARKS AND RECREATION

See page 16 for more information.

Parks and Recreation is going through a major transition to improve the current park conditions and plan a future passive recreational park at the new 5D Reservoir.



# Government



## HEALTH DEPARTMENT

**MANDATED** - man-dat-ed, (2) : to officially require (something)  
mandatory : ORDER; also : to direct or require (someone) to do something.

The Health Department provides many state mandated services, including: **Environmental Health** - Provides consultation and services for approximately 1,800 citizens and organizations through the inspection and permitting of food and lodging facilities, public swimming pools, on-site sewage systems and the private well program. **Clinic** - Provides care through Child Health, Family Planning, Maternal Health, and Adult Health programs. Provides mandated services through 500 immunizations and communicable disease programs. **WIC/Nutrition** - A federally funded supplemental nutrition education program funded by the USDA for infants, children and pregnant, postpartum and breastfeeding women. The Yadkin WIC office serves a monthly caseload of approximately 1250 participants. **Vital Records** - Provides the registration of all home births and deaths in Yadkin County and issues all permits for Burial Transit and Disinterment/Re-interment.

The Health Department also provides the following services: Care Management, Health Education, Community Outreach, Dental Services and Mammograms through a Susan G. Komen grant for uninsured women.

## REGISTER OF DEEDS

**MANDATED** - man-dat-ed, (2) : to officially require (something) mandatory : ORDER; also : to direct or require (someone) to do something.

The Register of Deeds Office serves as custodian and manager of a large number of public records. The records are recorded and maintained in accordance with the NC General Statutes and open for public inspection. The records include: Deeds, Deeds of Trust, Powers of Attorney, Separation Agreements, Plats, Cancellations and other miscellaneous documents. The Register of Deeds issues Marriage Licenses, indexes and issues certified copies of birth, death, and marriage licenses. They index military discharges and oaths of office. The Register of Deeds records approximately 4,500 documents a year, processes approximately 60 foreclosures, issues approximately 300 marriage licenses. The Register of Deeds collects approximately \$220,000 a year in revenue.

## SERVICES AND DEVELOPMENT (Planning & Zoning)

The Services and Development Department develops and implements plans and policies supporting sustainable development of land in the County. The department manages a number of community development activities, performs special studies, and enforces many County development regulations, including: the Subdivision, Zoning, Flood Damage Prevention, and Watershed Protection ordinances. Additionally, the department provides technical and administrative support to the Planning Board, Board of Adjustment, and Watershed Review Board. Other functions administered by the department include E-911 address assignment and computerized mapping using Geographic Information Systems (GIS).





## SHERIFF

**MANDATED** - man-dat-ed, (2) : to officially require (something) mandatory : ORDER; also : to direct or require (someone) to do something.

The County is mandated by state law to provide a Courthouse, Jail, 911-Communications and at least two deputies. The Sheriff, an elected official, is the only state constitutional office in North Carolina. Sheriff Ricky Oliver in Yadkin County oversees the following areas:

JAIL, CRIME PREVENTION, PATROL, INVESTIGATIVE DIVISION, COURTHOUSE SECURITY, WARRANTS and 911-COMMUNICATIONS.  
(For more information see pages 10 & 11.)

## SOCIAL SERVICES

**MANDATED** - man-dat-ed, (2) : to officially require (something) mandatory : ORDER; also : to direct or require (someone) to do something.

Social Services protects children, looks after the elderly, provides food assistance and medical care to the less fortunate and helps to keep people warm in the winter. This is done through a variety of Federal, state and local services and resources. These services include adult protective services, adult in-home care and helping families who must place a loved one into long term care. Services to families with children include child protective services, child foster care, family planning, assistance with adopting children, child day care assistance, child support and help with family emergencies. Social Services also provides food assistance (Food Stamps) to households whose income and wages is not enough to provide food for the family. For low income elderly and disabled adults, Social Services is the place to make application for North Carolina Medicaid. For elderly people who need residential care, Social Services provides assistance to get rest home care. Social Services provides assistance and training for low income people seeking jobs and who wish help improving job seeking skills. Social Services makes sure that the less fortunate in Yadkin County are not forgotten.

## SOIL & WATER

The Yadkin County Soil and Water Conservation District works with National Resources Conservation Service to provide citizens of Yadkin County with technical and financial assistance which is used to implement good, sound conservation practices.

**YADKIN COUNTY SOIL & WATER BOARD:** Mr. Lenuel Chamberlain, Chairman, Mr. Bobby Matthews, Jr., Vice-Chair, Ms. Jo Linville, Mr. Van Hemric and Mr. Grady Shore.

## TAX ADMINISTRATION

Tax Administration has four divisions: Land Records, Appraisal, Personal Property Listing and Collections.

- A 2% discount is provided for early payment on taxes in August. 55% of all taxes are paid in August.
- Approximately \$250,000 of taxes are exempted each year for the elderly, disabled and veterans.
- Approximately \$1,290,681 of taxes are exempted each for religious owned property.





## INSPECTIONS & ENVIRONMENTAL SERVICES

In Yadkin County we have streamlined the permitting functions of Building Inspections and Solid Waste that were two separate departments eliminating two full-time positions. This saved the taxpayers approximately \$75,000

**INSPECTIONS 2010-11 - BUILDING PERMITS:** 45 Single Family Dwelling, 15 Commercial Projects, 86 Additions - Remodel - Misc. Structures, 51 Manufactured Homes, 650 Mechanical - Electrical - Plumbing - Sprinkler, 183 Zoning Permits, and 243 Environmental Health Permits. **BUILDING INSPECTIONS:** 4,116 Building Inspections and 64 Fire Prevention Inspections.

**SOLID WASTE 2010-11** - Approximately 30,572 vehicles utilized the transfer station and 198,084 people came through collection sites.



## WASTE COLLECTION SITES & SCHEDULES

LANDFILL	<b>1149 Landfill Road, Yadkinville, NC 27055</b> MON through FRIDAY 8:00am-4:30pm & SAT 8:00am-2:00pm PHONE (336) 849-7720
SITE No. 1	<b>US HWY 21, located in front of the EMS Station.</b> 1008 Catherine Lane, Jonesville, NC 28642 MON-THUR-FRI 11:00am-7:00pm & SAT 8:00am-2:00pm PHONE (336) 526-4700
SITE No. 2	<b>MARANATHA CHURCH RD, located off of Hoots Rd.</b> 3016 Maranatha Church Road, Hamptonville, NC 27020 MON&THUR 11:00am-7:00pm & SAT 8:00am-2:00pm PHONE (336) 468-1818
SITE No. 3	<b>PATTERSON MILL RD, located on Patterson Mill Rd.</b> 1810 Patterson Mill Road, Yadkinville, NC 27055 SAT 8:00am-2:00pm PHONE (336) 367-5742
SITE No. 4	<b>MILL HILL, located off 67 E. on Mill Hill &amp; Dal Rd.</b> 3304 Dal Road, East Bend, NC 27018 MON&THUR 11:00am-7:00pm & SAT 8:00am-2:00pm PHONE (336) 699-4304
SITE No. 5	<b>LONE HICKORY, located off 601 on Lone Hickory Rd.</b> 1209 Lone Hickory Road, Yadkinville, NC 27055 MON&THUR 11:00am-7:00pm & SAT 8:00am-2:00pm PHONE (336) 463-4632
SITE No. 6	<b>SPEER BRIDGE, located off Old 421.</b> 1405 Speer Bridge Road, Yadkinville, NC 27055 MON, TUES, THUR & FRI 11:00am-7:00pm & SAT 8:00am-2:00pm PHONE (336) 961-6321
SITE No. 7	<b>HAMPTONVILLE, located off HWY 21 on Hamptonville Rd.</b> 3240 Hamptonville Road, Hamptonville, NC 27020 SAT 8:00am-2:00pm PHONE (336) 468-1448





# Your

**QUESTION:** A citizen just paid \$1,295.93 for property taxes, where did the money go?

**ANSWER:**

**\$428.82** goes to **HUMAN SERVICES** (Health Department, Department of Social Services, Veterans and Local Non-Profits)

**\$290.45** goes to **GENERAL GOVERNMENT** (Administration, Tax, Elections, Register of Deeds, Court House, Planning, etc.)

**\$270.82** goes to **PUBLIC SAFETY** (Sheriff, Emergency Services, Jail, 911 Communications, Fire Marshal, Inspections, and Animal Control)

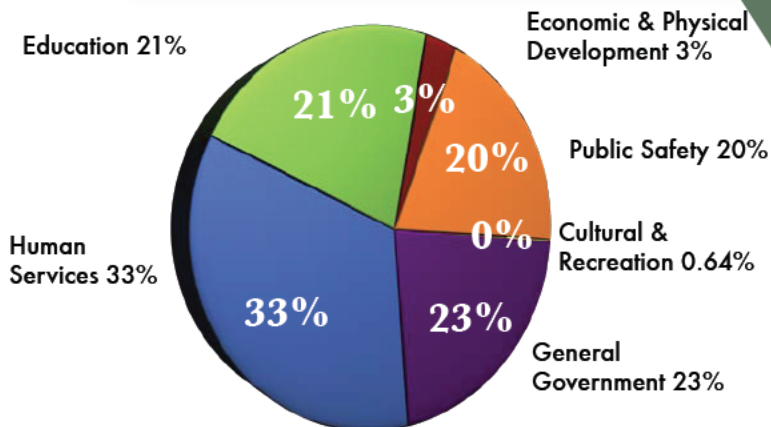
**\$260.21** goes to **EDUCATION** (Direct funding to local education)

**\$37.35** goes to **ECONOMIC AND PHYSICAL DEV.** (Planning, Economic Development, Cooperative Extension, Soil and Water).

**\$8.28** goes to **CULTURAL AND RECREATION** (Parks and Recreation, Library).

## Top 10 Taxpayers

TAXPAYER	VALUES	TAX AMOUNT	INDUSTRY
Unifi, Inc.	\$84,634,487	\$638,990	Manufacturing
Chipita America	\$43,162,080	\$325,873	Manufacturing
Duke Energy	\$38,954,553	\$293,693	Utility
Phillips Van Heusen	\$30,171,779	\$208,185	Manufacturing
Lydall	\$26,107,273	\$202,860	Manufacturing
Surry Yadkin EMC	\$9,221,257	\$70,004	Utility
TWE-Advance NewHouse	\$6,486,053	\$43,534	Cable Company
Yadkin Nursing Care	\$5,650,891	\$42,664	Health Care
Energy United EMS	\$5,547,565	\$42,131	Utility
Yadkin Valley Telecom	\$4,988,178	\$38,102	Telecom



## DID YOU KNOW?

Counties in North Carolina only have two sources of tax Revenue. Sales Tax and Property tax. Property tax makes up the largest portion of revenue.

Counties in North Carolina are mandated by law to provide the majority of services provided.



# Taxes



**Public Safety**  
(Sheriff Office , Jail & EMS) .20 Cents

**Education**  
.21 Cents

**General Government**  
.23 Cents

**Human Services**  
(Social Services & Health) .33 Cents



**Economic & Physical Development** .03 Cents

**Cultural & Recreation** .01 Cents

For every \$1.00 (Dollar) of North Carolina county tax dollars spent, approximately .75 cents goes to support **FEDERAL AND STATE MANDATED SERVICES.**

EDUCATION

JAIL

SOCIAL SERVICES

HEALTH DEPARTMENT

GENERAL GOVERNMENT

(Finance, Legal and HR Support of Mandated Services)





Post Office Box 146  
Yadkinville, North Carolina 27055



## YADKIN COUNTY SURVEY

We want to hear from you!

NAME: \_\_\_\_\_ EMAIL: \_\_\_\_\_

ADDRESS: \_\_\_\_\_ PHONE: \_\_\_\_\_

1. I want to help save postage and publishing cost by opting out of US Mail Annual Report, Please send next years Annual Report to my email address. (Check Yes to opt out of future mailing of report) \_\_\_\_ YES.

2. Was this report helpful? What did you like? What did you dislike? Is there anything you would like to see added?

3. I would like for the County to:

PLEASE MAIL BACK TO: Post Office Box 146, Yadkinville, NC 27055 or email your responses to  
[annualreport@yadkincountync.gov](mailto:annualreport@yadkincountync.gov).