



2017

YADKIN COUNTY

State of the County Health
Report



Yadkin County SotCH Report

- County Data
 - *Leading Causes of Death*
- Continued Health Concerns
- Emerging Health Issues
- CHA Priorities
 - *Action Plans*
 - *Progress*
- Trending Data
- New Initiatives

COUNTY DATA

Yadkin County SotCH Report

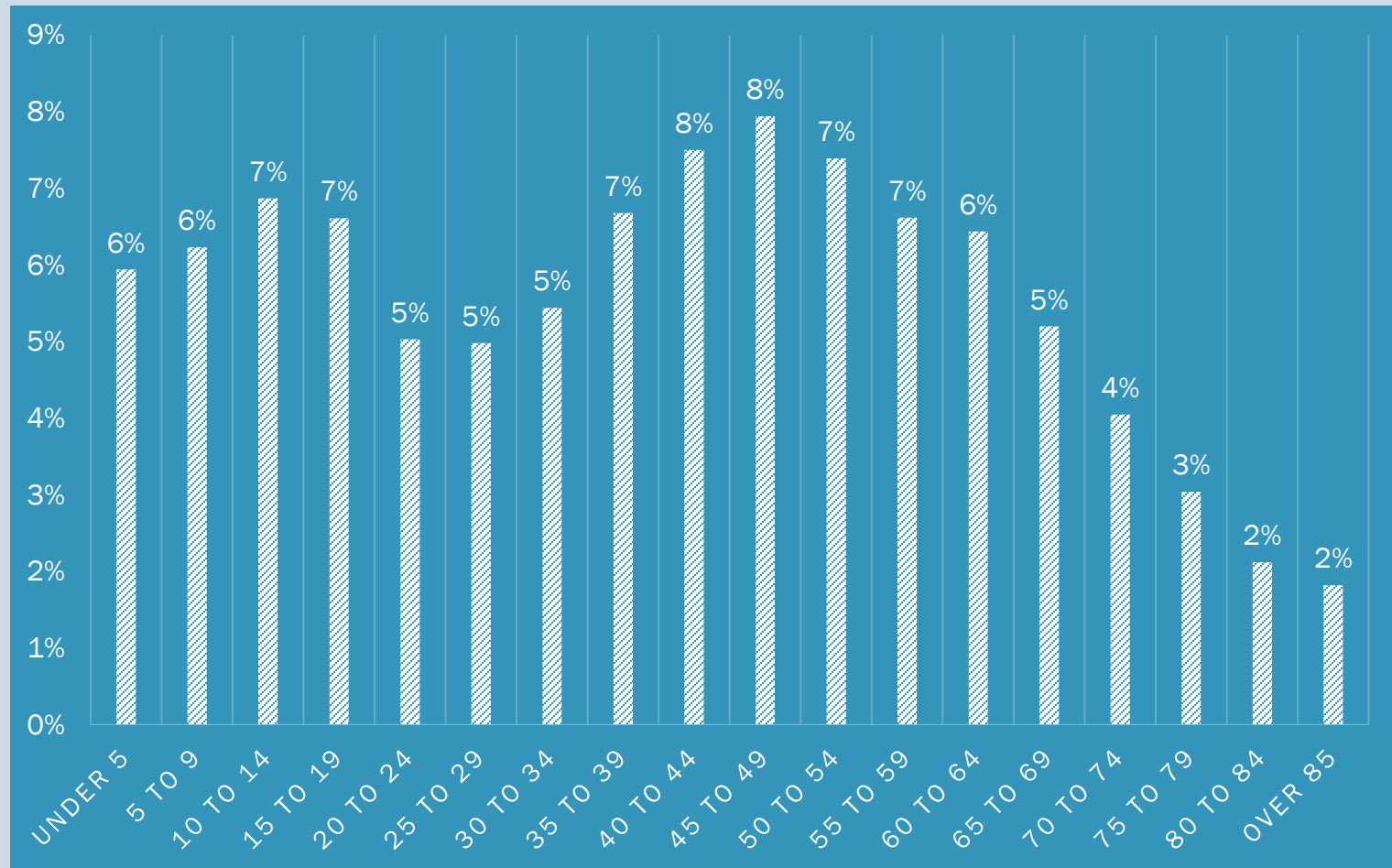


County information: Snap Shot

People QuickFacts	Yadkin County	North Carolina
Population, 2016 estimate	37,532	10,273,419
Persons under 5 years, percent, 2016	5.1%	6%
Persons under 18 years, percent, 2016	21.3%	22.7%
Persons 65 years and over, percent, 2016	19%	15.5%
Female persons, percent, 2016	50.4%	51.3%
White persons, percent, 2016	94.1%	71%
Black persons, percent, 2016	3.4%	22.2%
Persons of Hispanic or Latino Origin, percent, 2016	11%	9.2%
Language other than English spoken at home, percent age 5+, 2012-2016	8.3%	11.3%
High school graduate or higher, percent of persons age 25+, 2012-2016	78.1%	86.3%
Bachelor's degree or higher, percent of persons age 25+, 2012-2016	12.1%	29%
Median household income, 20120-2016 (in 2016 dollars)	\$38,623	\$48,256
Persons in poverty, percent	14.0%	15.4

(US Census QuickFacts)

Population by Age (2010-2016)



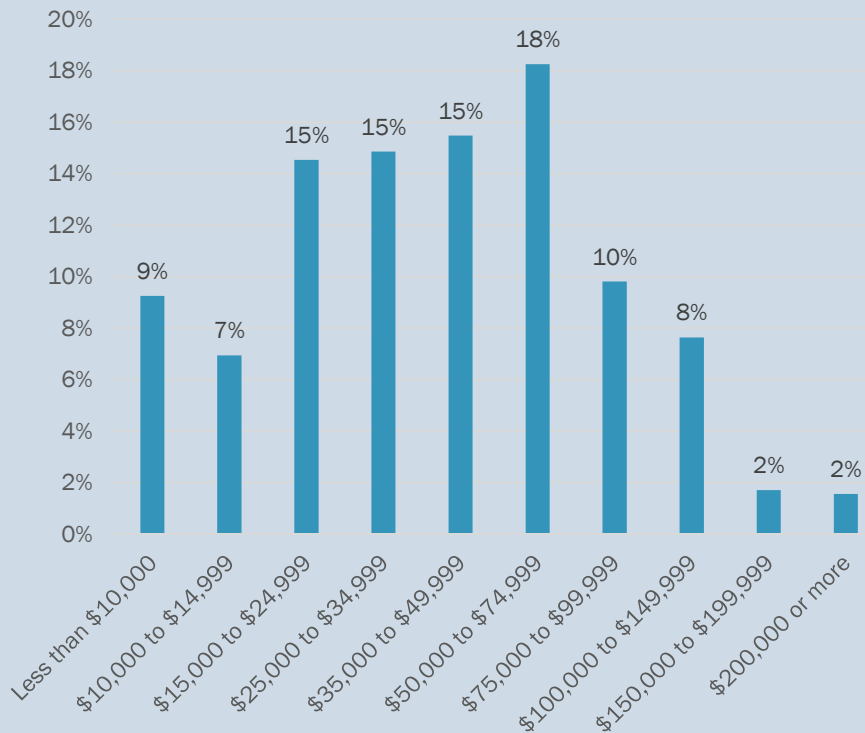
Annual Estimates of the Resident Population for Selected Age Groups by Sex for the United States, States, Counties and Puerto Rico Commonwealth and Municipios: April 1, 2010 to July 1, 2016

Economic Characteristics

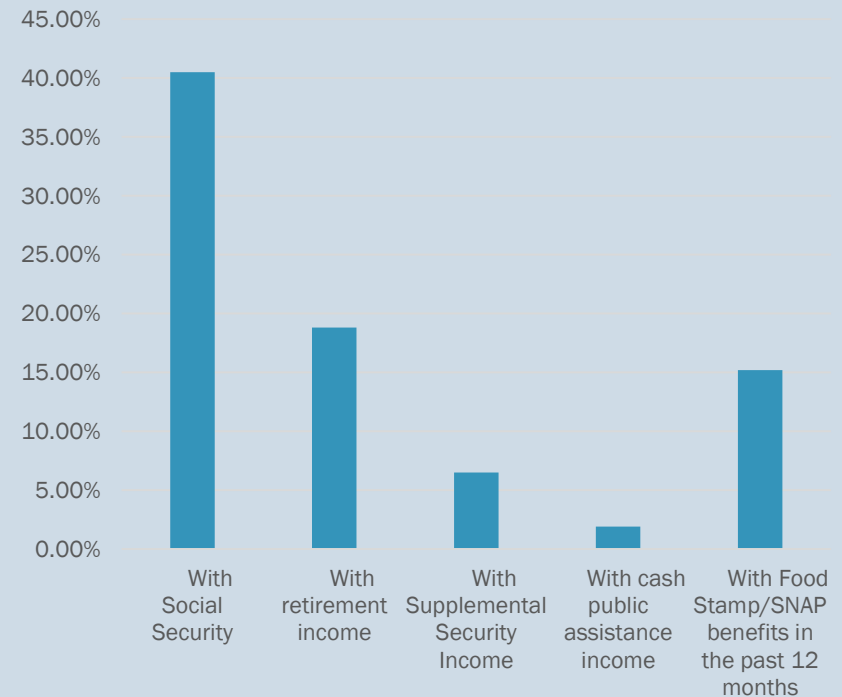
- According to the NC Department of Commerce, Access NC data set₃:
 - *The November 2017 prelim., 2016 unemployment rate is 3.9%*
 - *Yadkin County has a Tier 1 designation*
 - *24% of Yadkin County residents reside in rental properties*
- In Yadkin County, 2,353 families have children under age 6, and of those, 42.1% have both parents working₄.
- The number of families with children between ages 6 and 17 is 5,571, and 55.5% of those families have both parents working₄
- 54.8% of the population is in the workforce₄

Income & Benefits₄

Total Household Income



Supplemental & Other Income

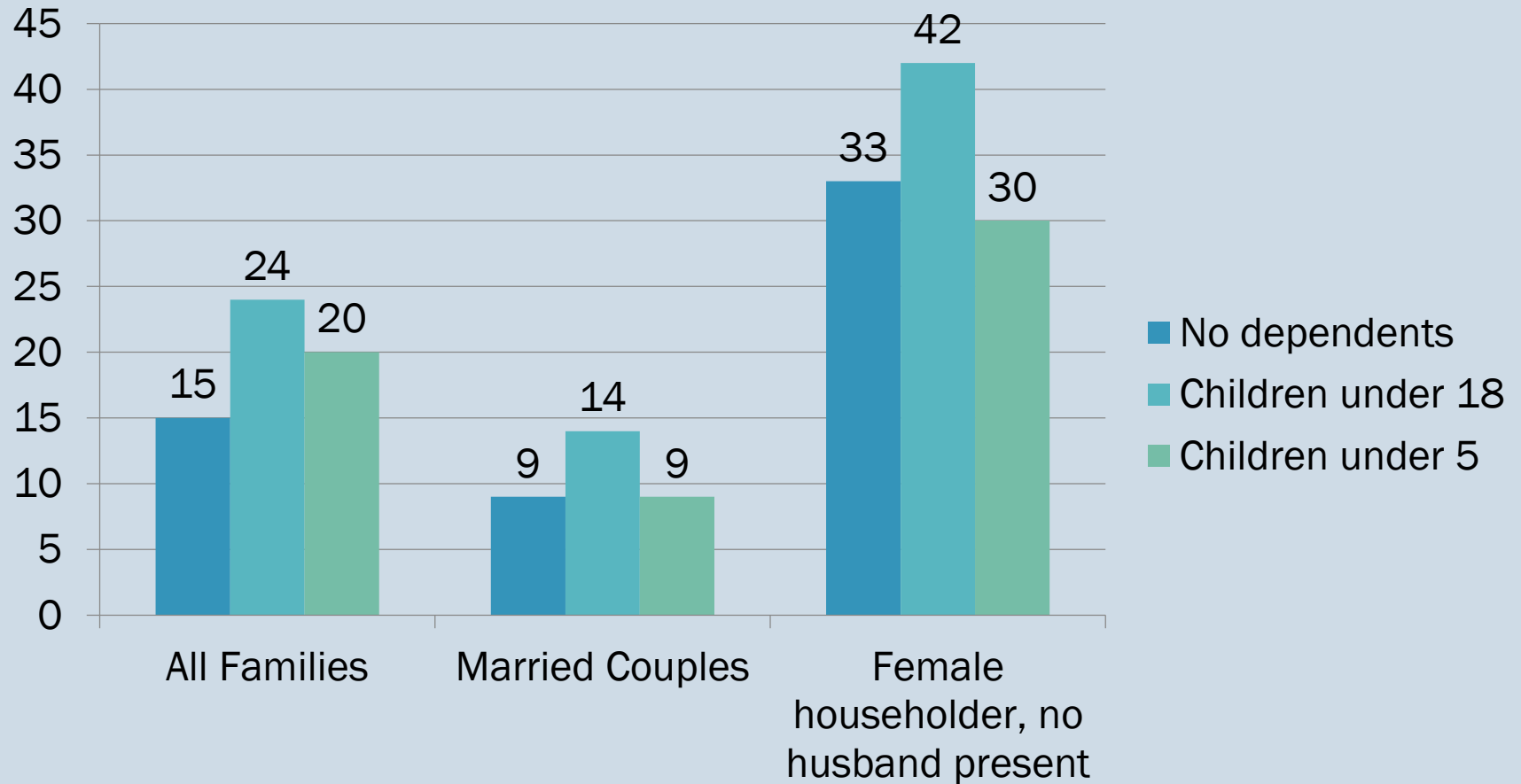


Other income:

- Social Security income is \$16,869
- Retirement income is \$17,412
- Supplemental Security income is \$8,647
- Cash public Assistance is \$3,270
- 2,330 households receive SNAP

Families in poverty₄

(past 12 months)



LEADING CAUSES OF DEATH – All Ages

		# OF DEATHS	DEATH RATE
RANK	CAUSE OF DEATH:		
0	TOTAL DEATHS - ALL CAUSES	2,125	1124
1	Diseases of the heart	468	247.5
2	Cancer – all sites	450	238
3	Chronic lower respiratory diseases	146	77.2
4	Cerebrovascular disease	138	73
5	Other Unintentional injuries	89	47.1
6	Diabetes mellitus	74	39.1
7	Alzheimer's disease	73	38.6
8	Pneumonia & influenza	72	38.1
9	Septicemia	52	27.5
10	Nephritis, nephrotic syndrome, & nephrosis	46	24.3

LEADING CAUSES OF DEATH – By Age Group

- **0-19 (30)** year old age group, the leading causes of death are pre-natal related/birth defects (5), conditions originating in the perinatal period (4), motor vehicle injuries (4), other unintentional injuries (4).
- **20-39 (56)** age group, most top causes of death are related to unintended injury (22), suicide (8) and motor vehicle accidents (7).
- **40-64 (445)** age group, the top causes of death are cancer (123), disease of the heart (88), and diabetes (33).
- **65-84 (1,015)** age group (highest incidence of death) these are related to chronic diseases such as cancer (254), disease of the heart (207) and lung disease (94).

CONTINUED HEALTH CONCERNS

Yadkin County SotCH Report



Continued Health Concerns

From 2015 CHA Report

- Prescription drug abuse/overdose
- Knowledge and use of available physical activity opportunities
- Chronic disease morbidity and mortality

From 2016 SotCH Report

- Teen pregnancy
- Chronic Disease
- Health care access
- Birth risk factors
- Obesity
- Physical activity/nutrition
- Poisonings
- CD/STD

Continued Health Concerns: Teen Pregnancy

2016 Teen Pregnancies (ShiftNC.org)	Yadkin	North Carolina
Number of pregnancies among 15-19-year-old girls:	41 ▲	
Teen pregnancy rate per 1,000 15-19-year-old girls:	36.5 ▲	28.1
Teen pregnancy rates by race/ethnicity: white	36.6	19.4
Teen pregnancy rates by age: 18-19 year olds	74.7	50.7
Number of pregnancies among 15-17-year-old girls:	13 ▲	
Number of pregnancies among 18-19-year-old girls:	28 ▲	
Percent of Repeat Pregnancies:	12.2% ▼	22.1%
Teen birth rate per 1,000 15-19-year-old girls:	32.1	21.8
NC County Ranking (out of 100 counties):	24	
Change since 2015:	+14.1%	-7%

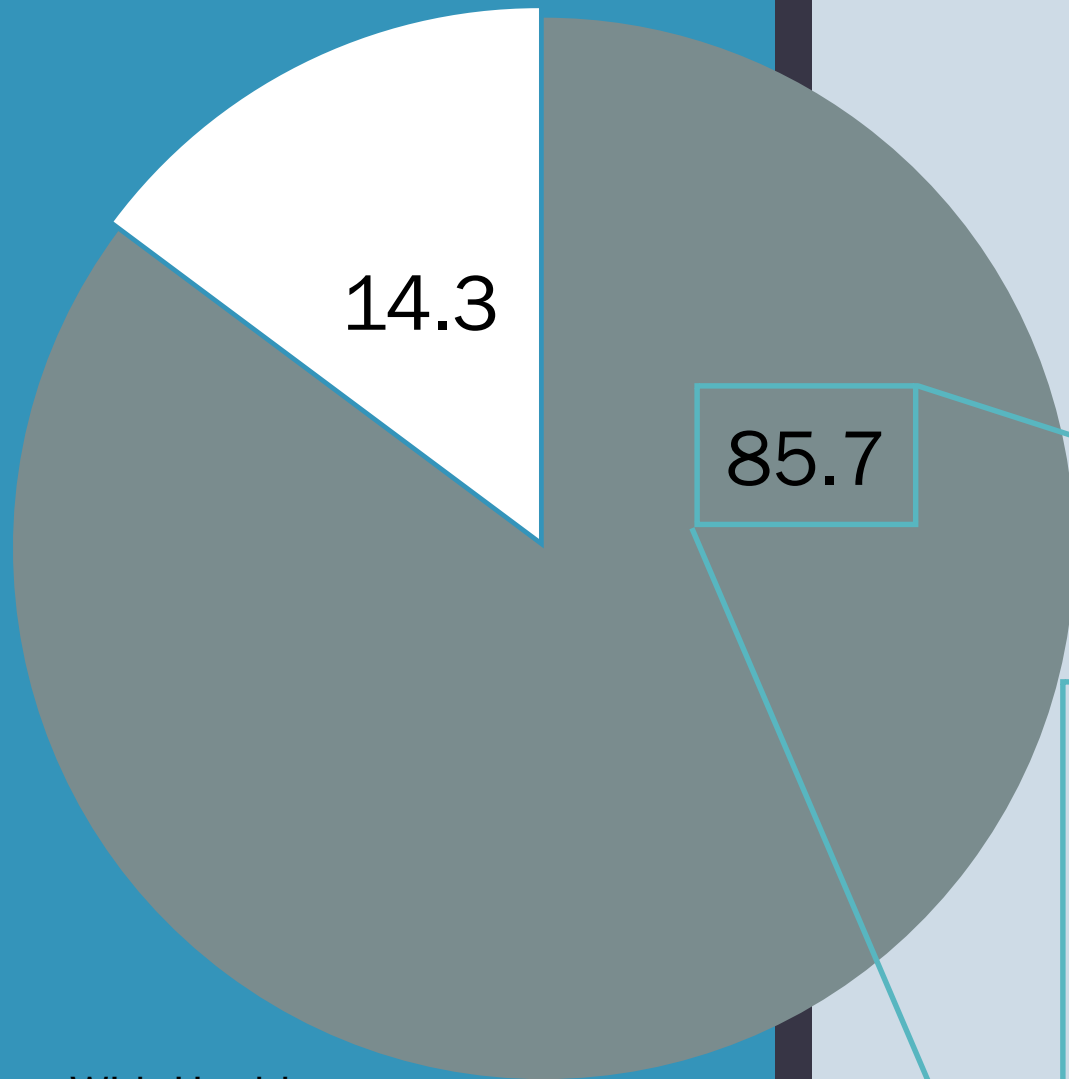
Continued Health Concerns: Chronic Disease

■ Chronic Disease:

- *According to the State Center for Health Statistics: **1,276 (60%)** of our leading causes of death are caused by chronic conditions such as heart and lung disease, cancer, and diabetes.*
- *Cancer (2012-2016)*
 - Incidence: 1,167 cases; 454.0/100,000 (NC rate is 464.5/100,000)
 - *Yadkin lung cancer incidence is higher than NC: 73.5/100,000 compared to 66.3/100,000*
 - Mortality: 450 deaths; 171.9/100,000 (NC rates is 166.6/100,000)
 - *Yadkin lung cancer mortality is higher than NC: 58.0/100,000 compared to 47.6/100,000*
 - *Yadkin breast cancer mortality is higher than NC: 24.4/100,000 compared to 20.8/100,000*

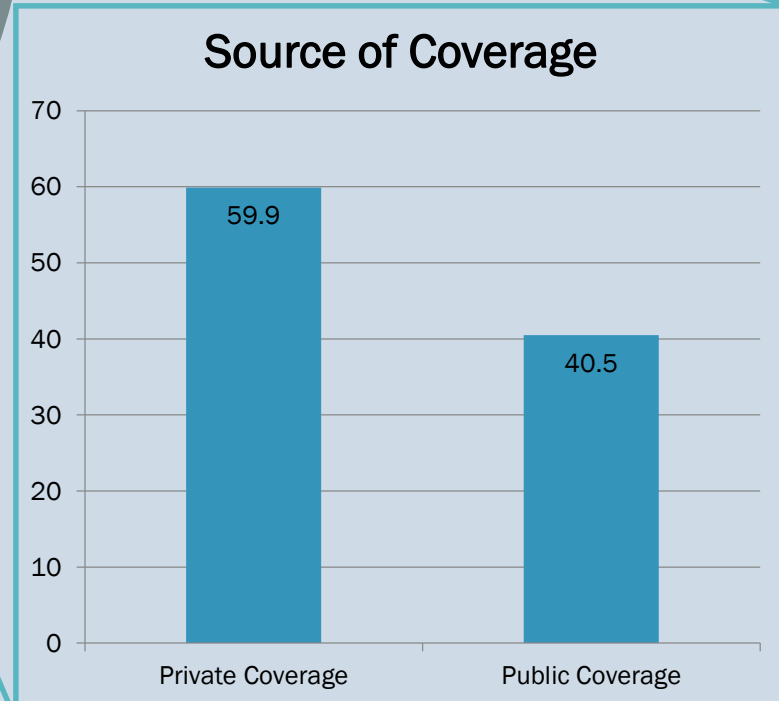
Continued Health Concerns₄:

Health Insurance Coverage

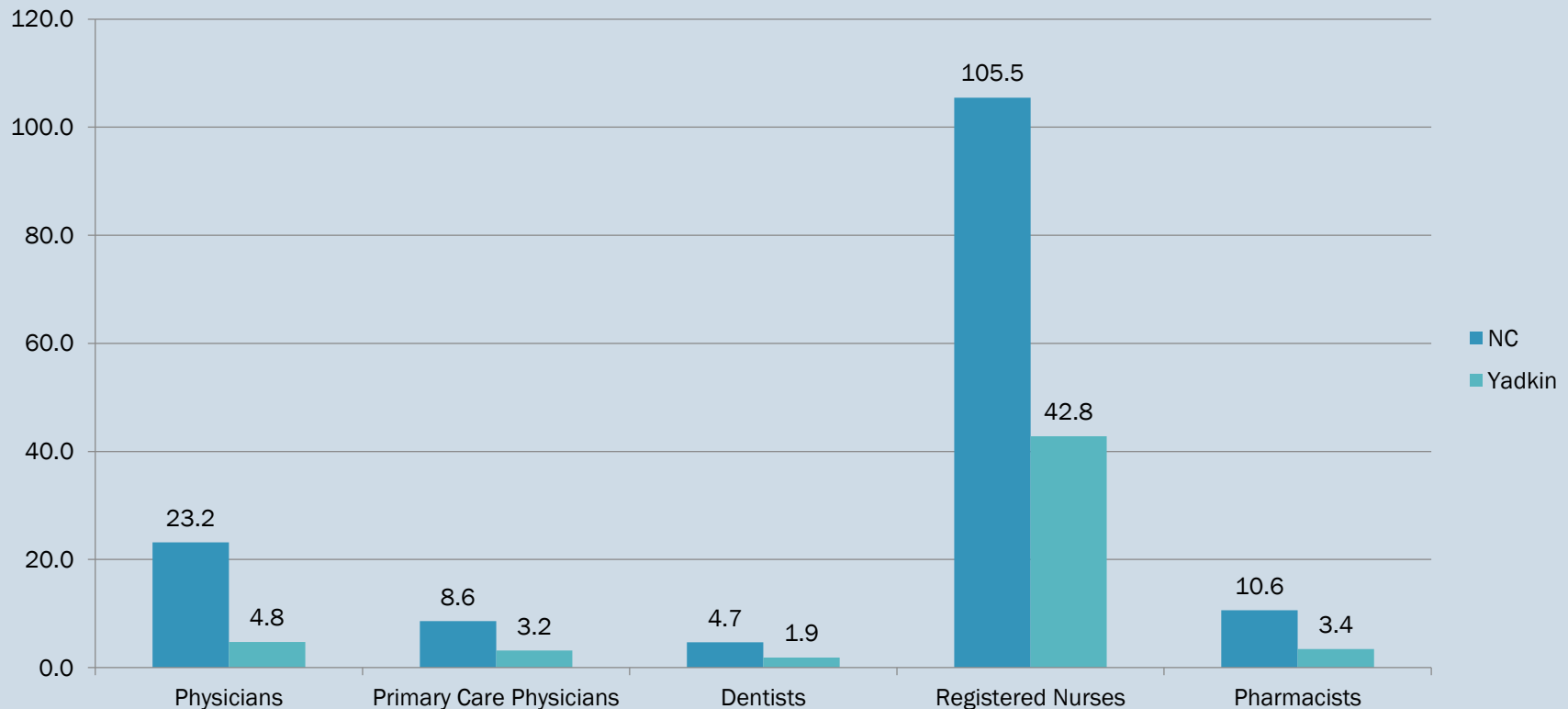


■ With Health Insurance

■ No Health Insurance



Health Providers *(per 10,000)*



Yadkin falls behind the state rate for all health care providers, including physicians, NPs, PAs, RNs, and pharmacists. See the following table for rates. **most recent data*

Source: 2014 NC Health Professionals Data Book

Continued Health Concerns:

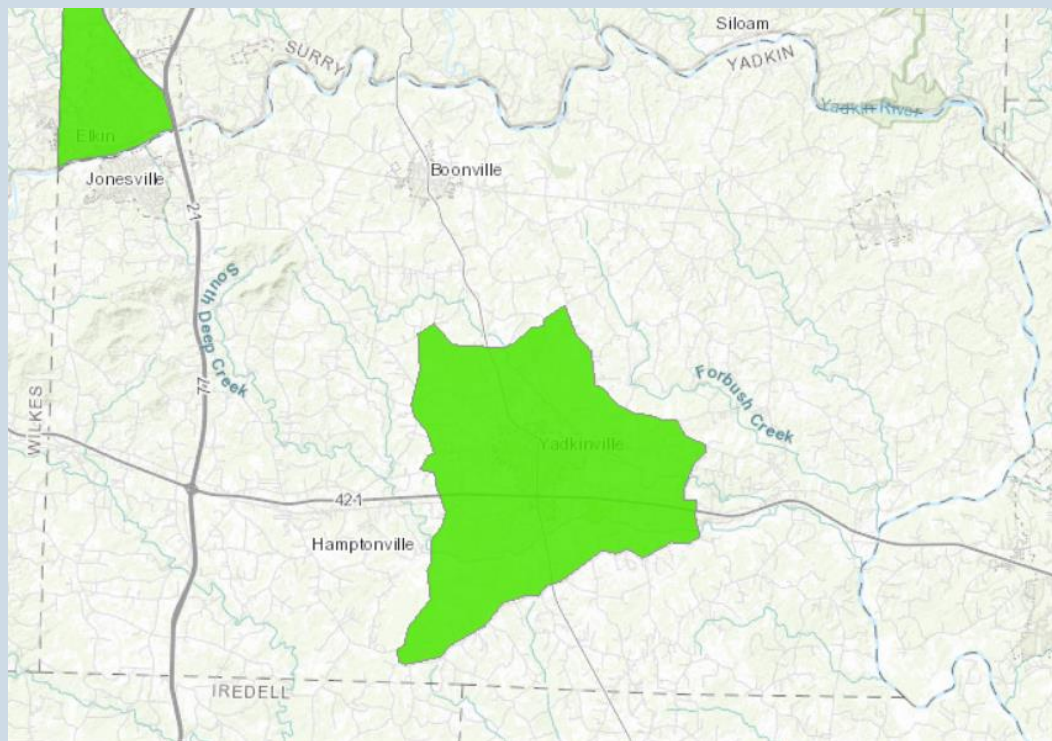
Birth Risk Factors & Characteristics – NC County Health Data Book 2018

*(NC State Center for Health
Statistics)*

- 8.9% of infants were born preterm
- 6.1% of infants were born at a low birth weight, 1.8% were born at a very low birth rate
- 11 infants were born to women under 18 years
- 14.8% of mothers had less than a high school education and 37.5% were unmarried
- 5.6% of births in 2016 were to a woman who received very late (third trimester) or no prenatal care
- 18.1% of babies were born to women who smoke
- 53.1% were overweight or obese pre-pregnancy

Continued Health Concerns: Nutrition

- 4900 food insecure people in Yadkin County₆
- 12.9% of the population is food insecure₆
- Of food insecure people, 14% are above SNAP, other nutrition programs threshold of 200% poverty₆
- Average meal cost is \$2.88₆
- The annual food budget shortfall in Yadkin is \$2,527,000₆



USDA: “Food Access Research Atlas”

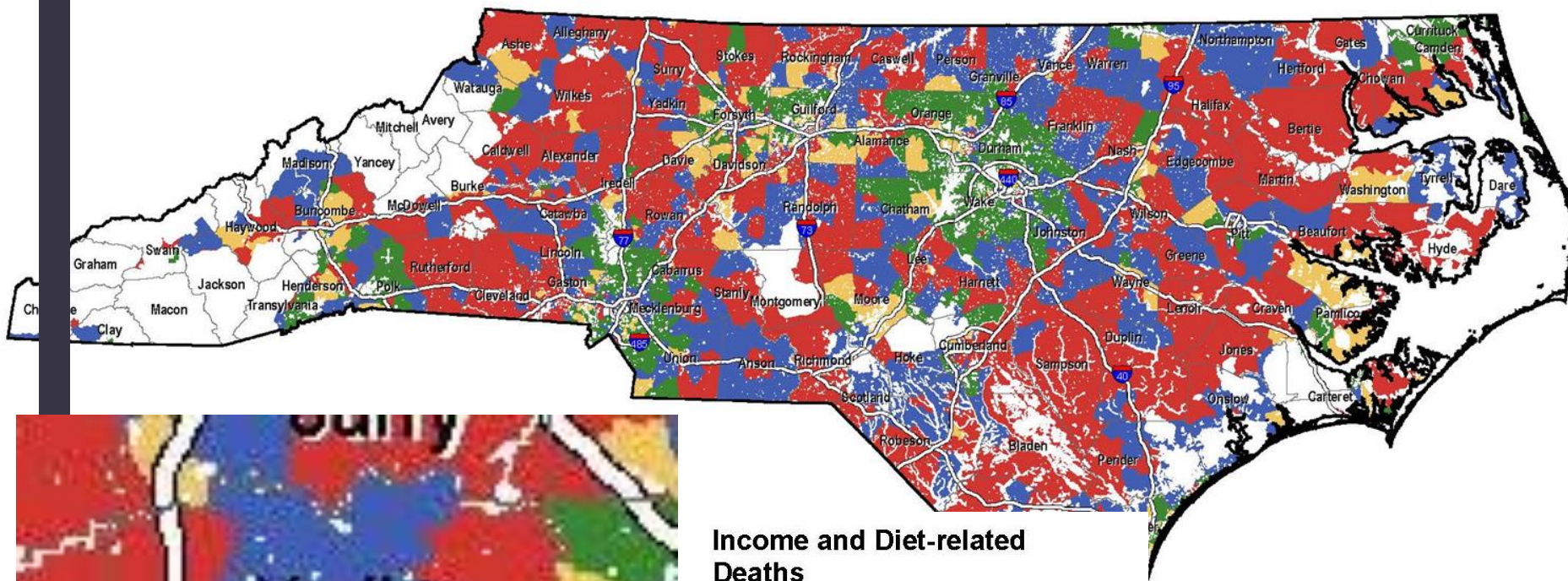
Low-income census tracts where a significant number or share of residents is more than 1 mile (urban) or 10 miles (rural) from the nearest supermarket.

Nutrition: Food Access

- 2017 North Carolina Food Access Maps (NC Alliance for Health)
 - *The following maps show food access in North Carolina as a state. These maps represent areas in which residents are low income and where there are low supermarket sales and high rates of diet-related deaths.*

North Carolina

MAP 5 Income and Diet-related Deaths



Income and Diet-related Deaths

- Low Income & Low Deaths
- Low Income & High Deaths
- High Income & Low Deaths
- High Income & High Deaths

Highways

Counties

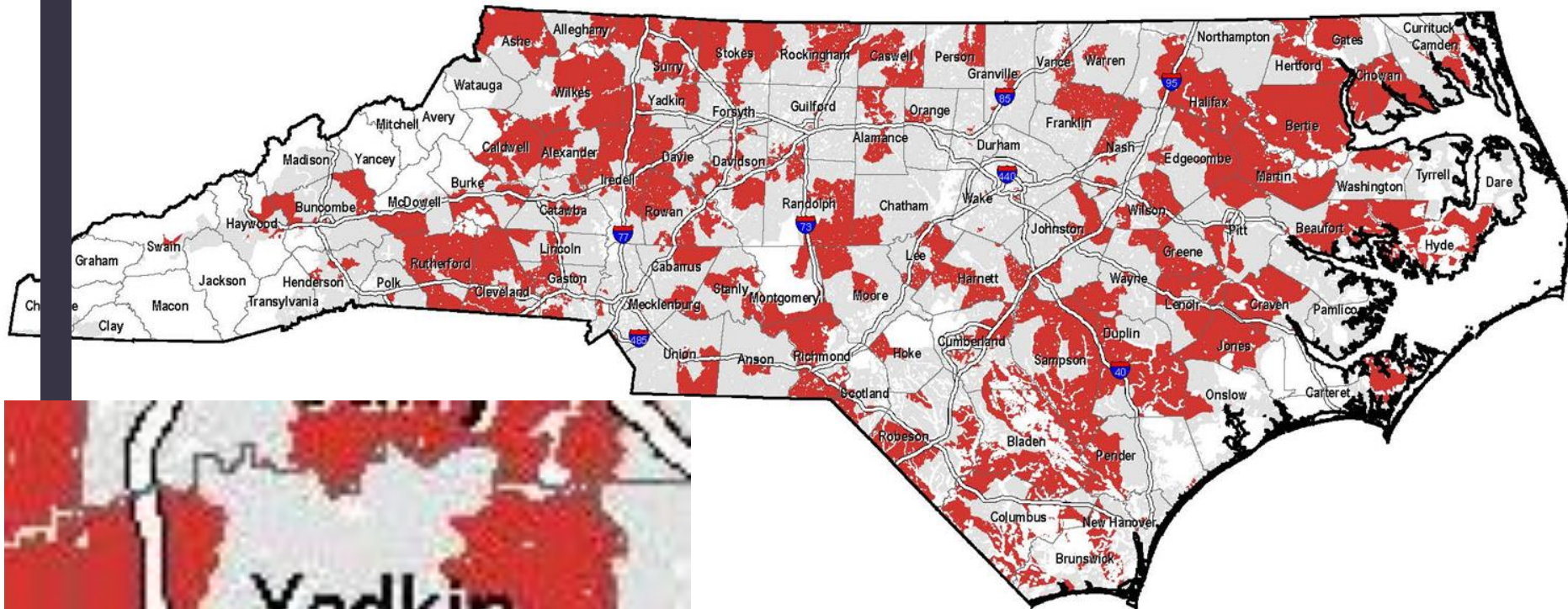
Park, Forest or Non-Residential

0 20 40 80
Miles

*Data: Nielsen TDLinx Services, 2016;
US Census, ACS 5 Year, 2010-2014;
North Carolina Department of Health
and Human Services, 2014*

North Carolina

MAP 6 Areas with Greatest Need



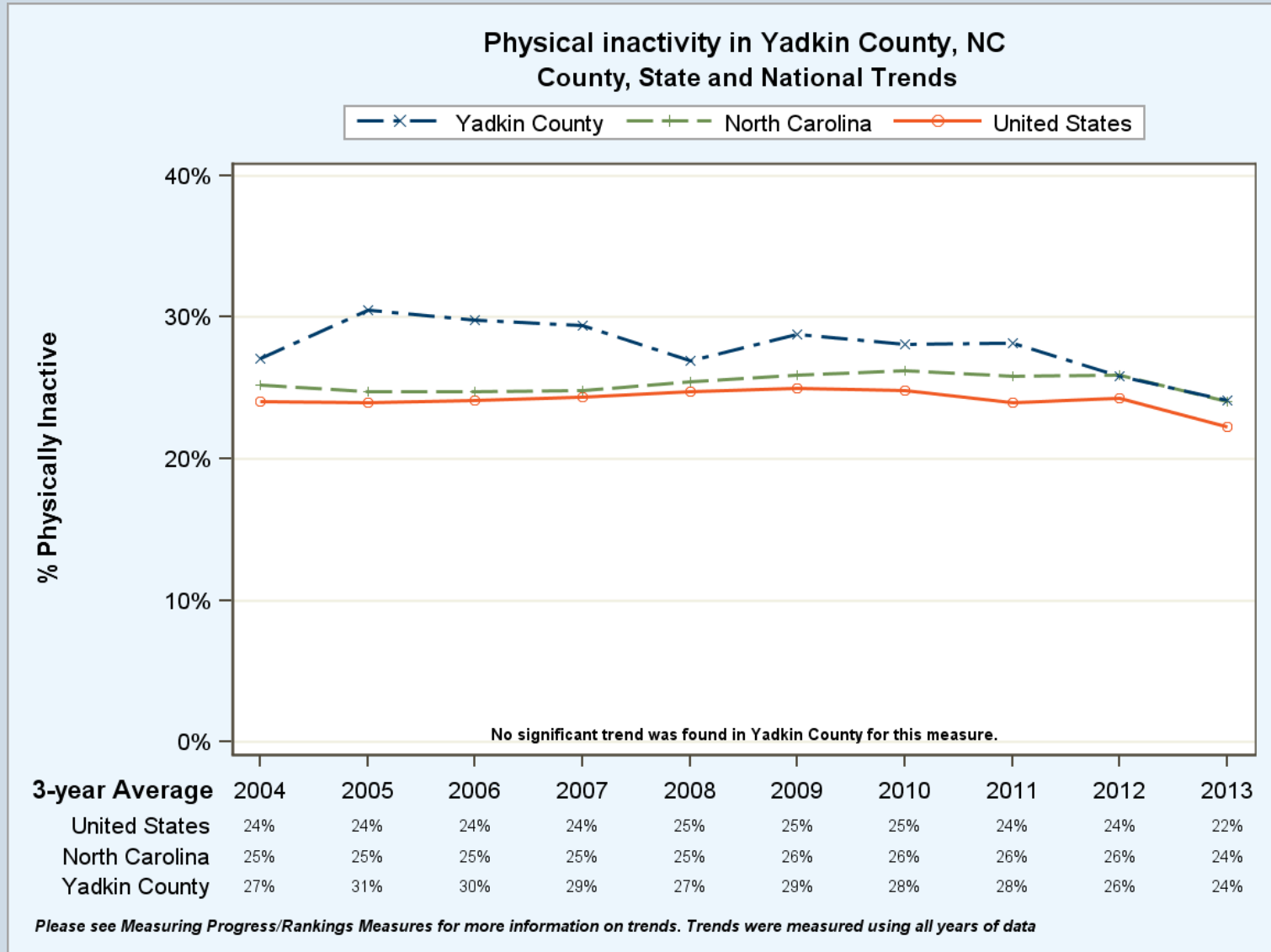
Areas with Greatest Need

- Low Sales, Low Income, High Deaths
- Not Low Sales, Low Income, High Deaths
- Highways
- Counties
- Park, Forest or Non-Residential

0 20 40 80
Miles

*Data: Nielsen TDLinx Services, 2016;
US Census, ACS 5 Year, 2010-2014;
North Carolina Department of Health
and Human Services, 2014*

Continued Health Concerns: Physical Activity

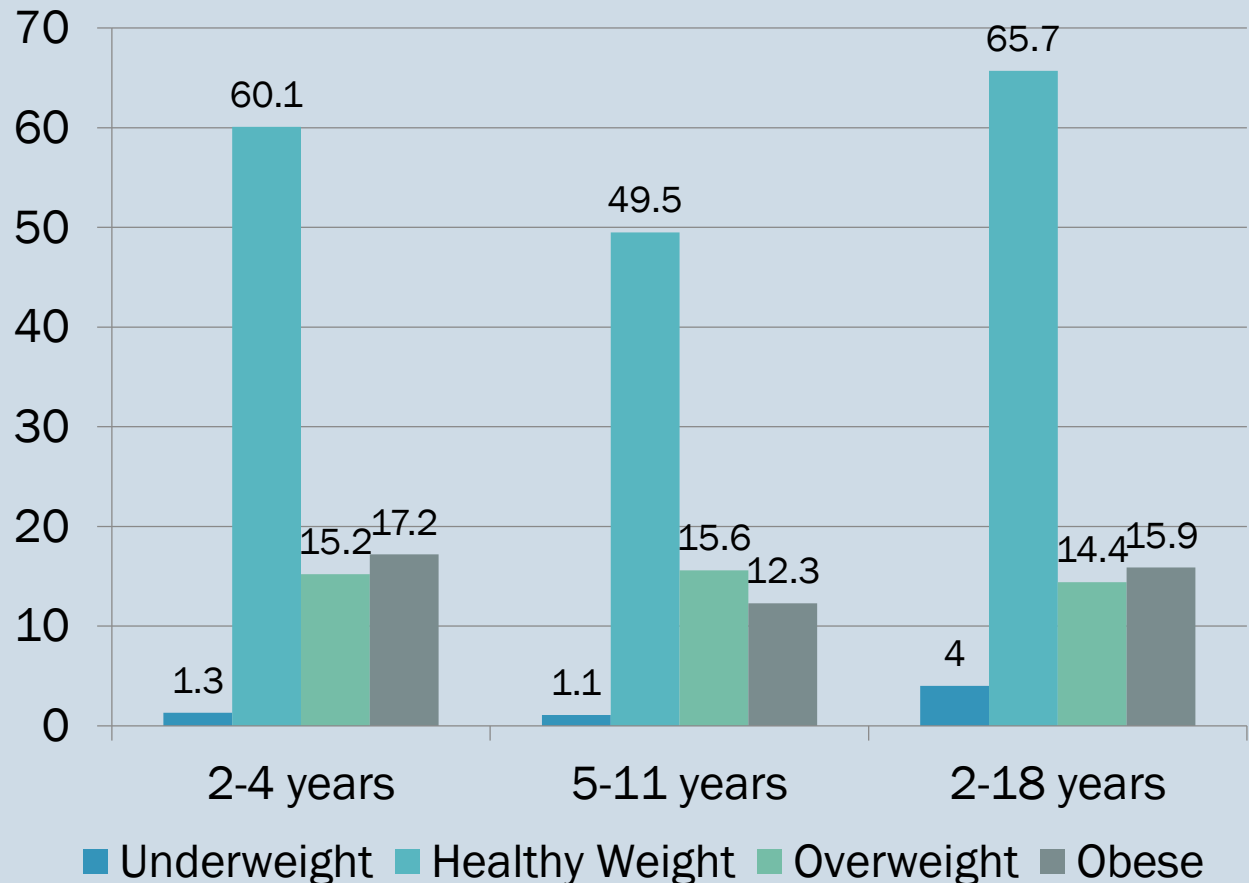


County Health Rankings

- 24% of adults report being physically inactive

Continued Health Concerns: Obesity

- Adults: 31% were obese₅
- Children overweight or obese
 - ages 2-4: 32.4%
 - ages 5-11: 27.9%
 - ages 2-18: 30.3%

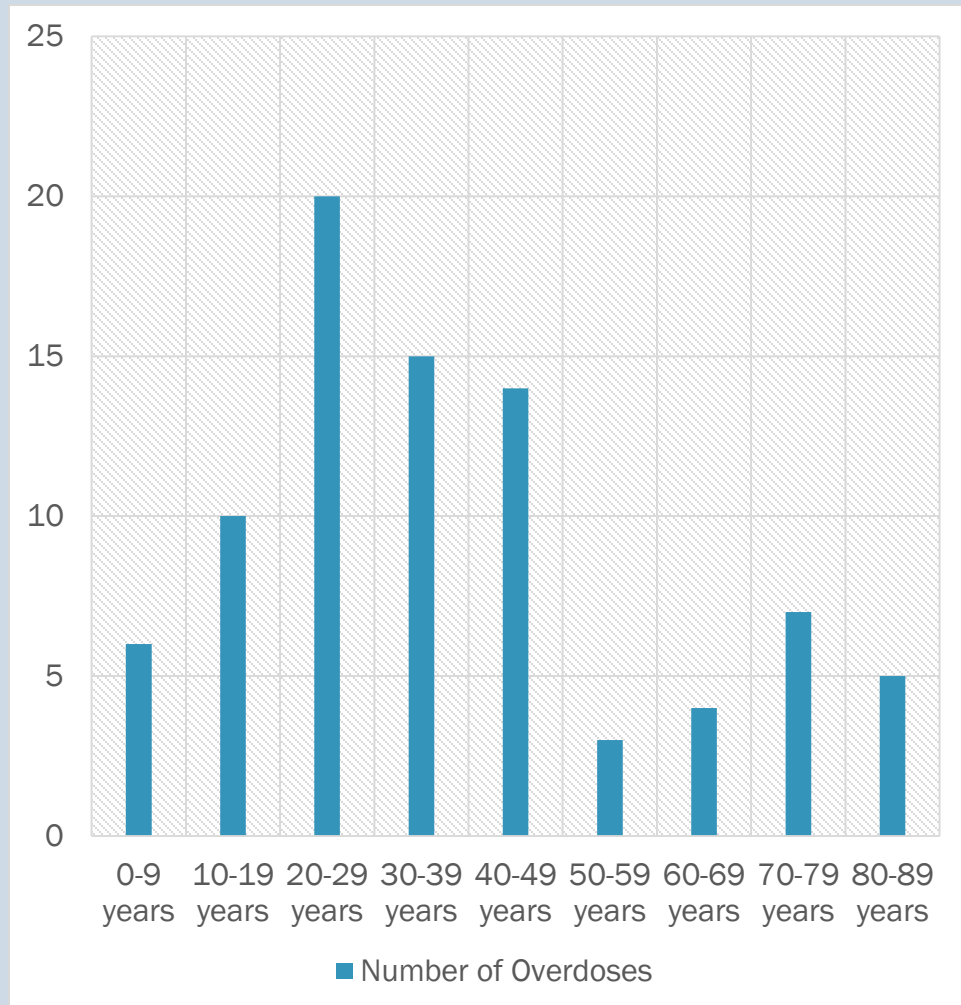


Child Health: SNAP SHOT

- 21% (8,094) of the county's population are residents under the age of 18₈
- 29.6% of children are in poverty₄
- 25.6% of children in Yadkin live in food insecure households compared to 24.6% at the state₈
- 5.6% of children are considered uninsured compared to the state's 4.6%₈
 - 4,506 are enrolled in Medicaid/Health Choice₈
- Rate of children assessed for abuse/neglect per 1,000 in Yadkin is 40.2₈
- Rate of children in foster care per 1,000 in Yadkin is 10.1, while the state rate is 6.7₈
- The County infant death rate is 7.7 per 1,000 live births₁₁
 - 5 deaths of children 0-17 years (2016)
 - 3 were under 1 year of age
 - Deaths were from congenital malformations, deformations and chromosomal abnormalities

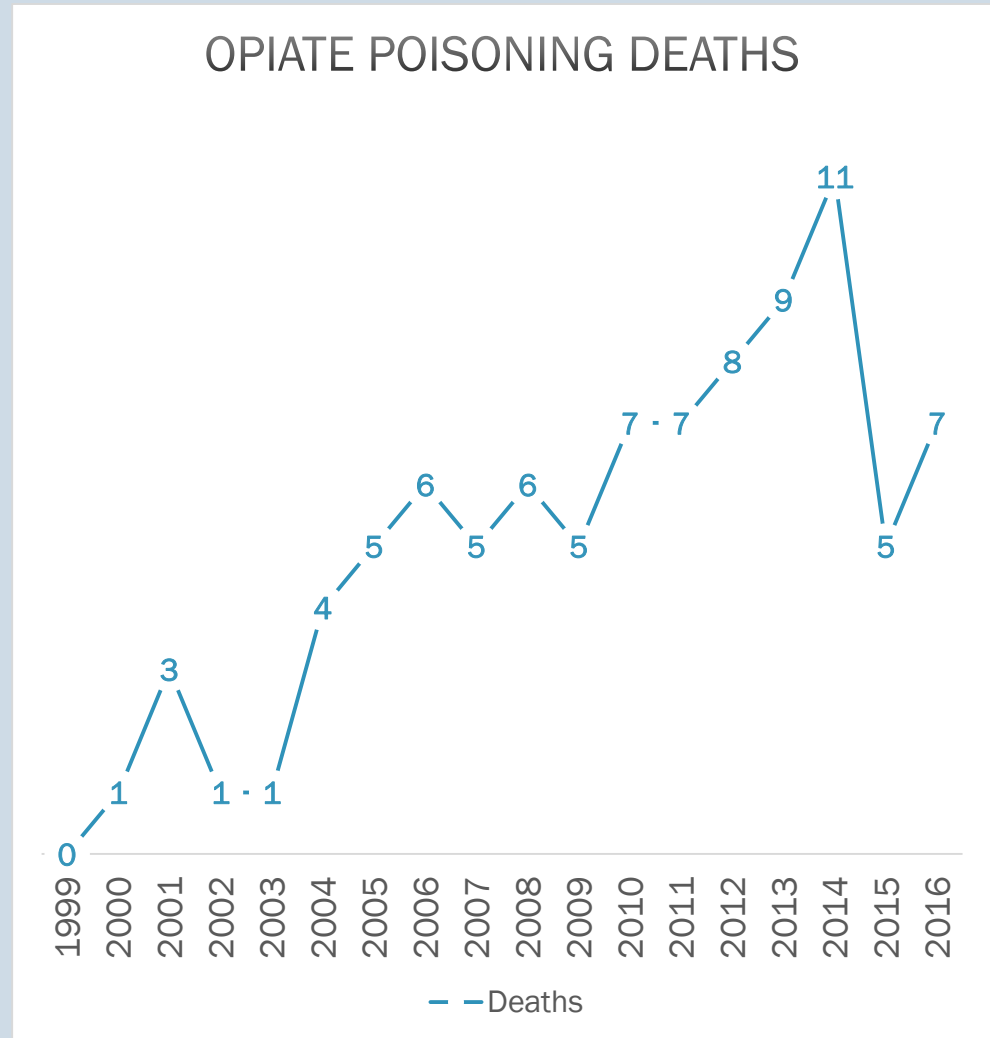
Overdose: Unintentional Medication or Drug Overdose₁₃

- NCDETECT Data reports show 84 instances of unintentional medication or drug overdose in 2017
- The ages range from 1 to 88 with the average age being 38
- 55% were male, 98% were white/non-Hispanic
- 33% were from within the Yadkinville zip code; 26% were East Bend

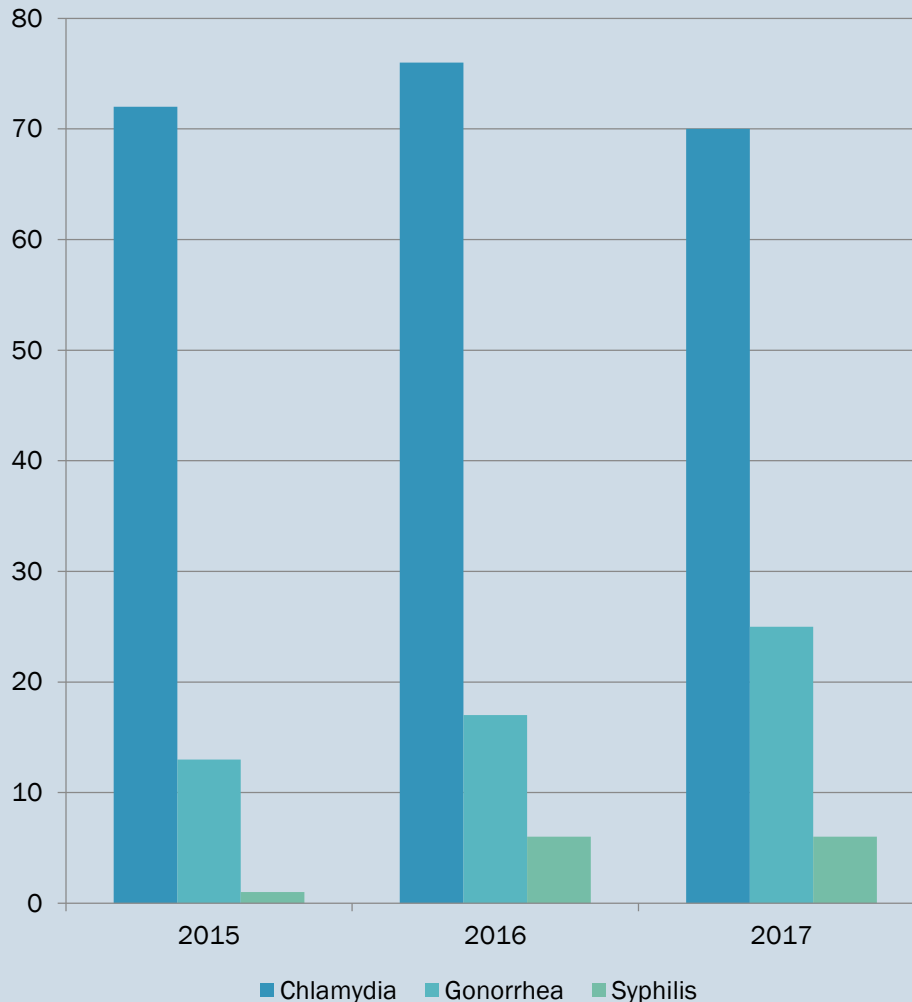


Poisoning Deaths (2012-2016)

- 6 total deaths due to poisoning in 2016, 110 from 2009-2016₁₂
- The 6 deaths in 2016 were unintentional. Of the 110, 92% were unintentional₁₂
- The unintentional poisoning mortality rate for Yadkin is 19.6 per 100,000 residents₁₀
 - *More than the state rate, 13.2*
- 2016, Yadkin had 3 heroin deaths, 1 synthetic opioid and 1 Benzodiazepine₁₂
- Opiate poisoning death rate is 21.2/100,000 compared to the state rate of 10.3₁₀
- The opioid prescribing rate in Yadkin is 69.3/100,000 compared to the state rate of 82.2₁₀



Communicable Disease/STDs



- There were 179 confirmed cases of communicable disease
- 101 of these, or 56%, were bacterial STDs
- The average age of the confirmed STD patient was 27, with ages ranging from 14 to 57.
 - *19, or 18.8%, were between 15-19 years old*
- 54 of these were confirmed chronic Hepatitis C
- Includes an active TB case

EMERGING HEALTH ISSUES

Yadkin County SotCH Report

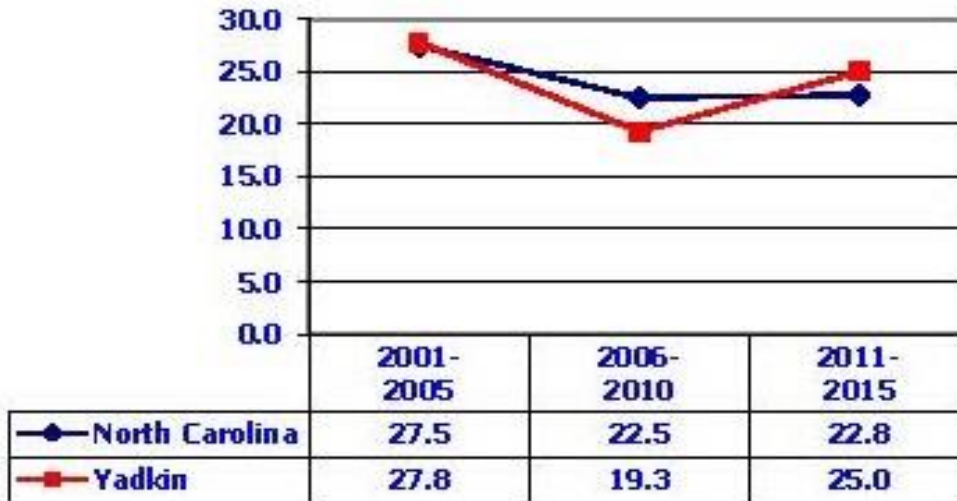


Emerging Issues

- The following areas are a concern, as the numbers continue to increase over time:
 - *Chronic Diseases*
 - Cardiovascular disease
 - Heart disease
 - Stroke
 - Diabetes deaths
 - *Unintentional injury (including accidental overdose)*
 - *Suicide*
- Graphs showing the trends follow

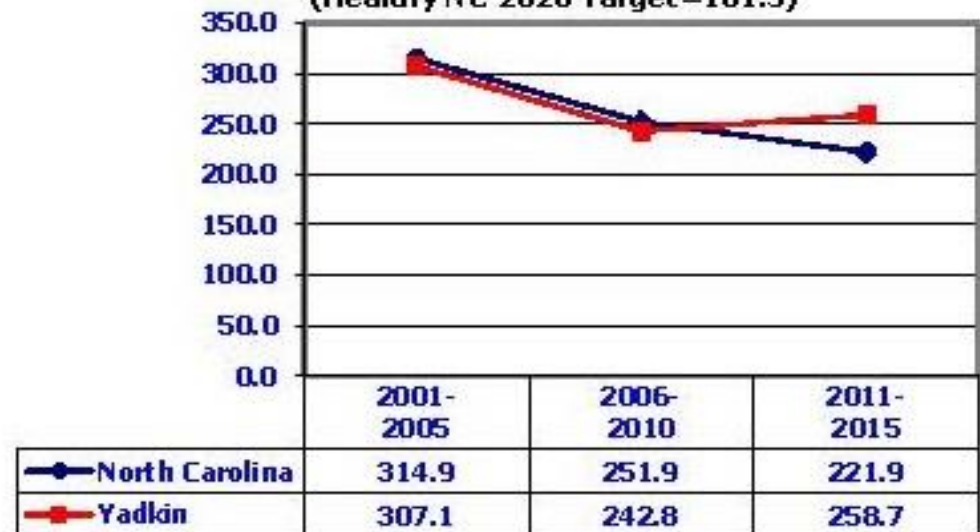
Diabetes Deaths

12. Age-Adjusted Diabetes Death Rates per 100,000 Residents



Cardiovascular Disease Deaths

9. Age-Adjusted Cardiovascular Disease Death Rates per 100,000 Residents (Healthy NC 2020 Target=161.5)

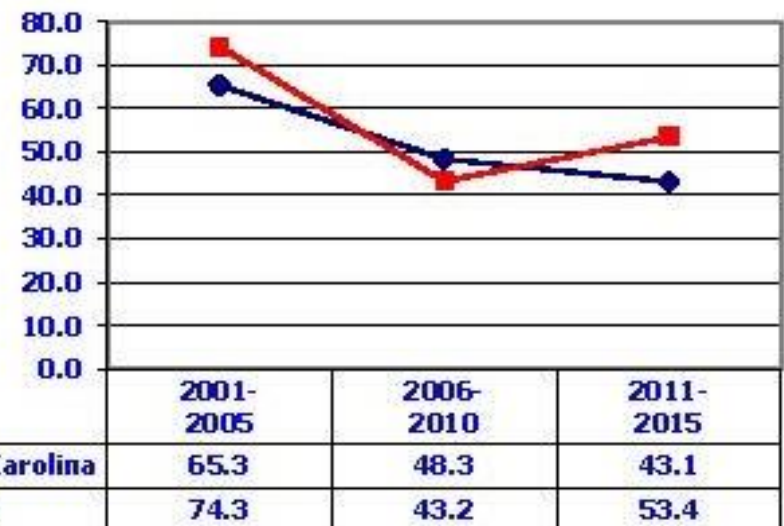


Heart Disease Deaths

10. Age-Adjusted Heart Disease Death Rates per 100,000 Residents



11. Age-Adjusted Stroke Death Rates per 100,000 Residents



Stroke Deaths

Suicide Deaths

20. Age-Adjusted Suicide Rates per 100,000 Residents
(Healthy NC 2020 Target=8.3)



Unintentional Injury Deaths

18. Age-Adjusted Unintentional Injury Death Rates
per 100,000 Residents
(excluding Motor Vehicle Deaths)



TRENDING DATA

Yadkin County SotCH Report

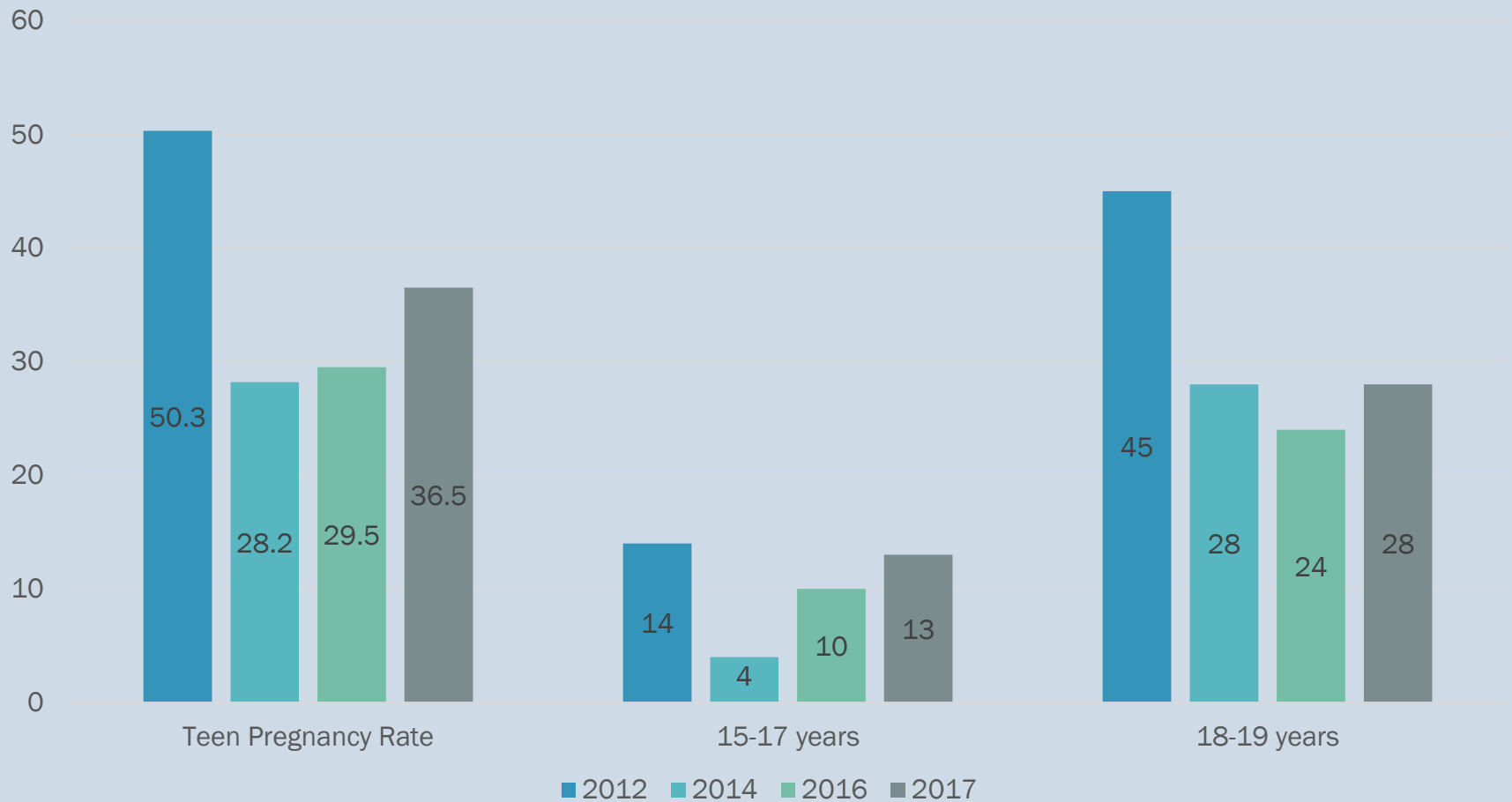


Trending Data:

	2012	2014	2016	2017
Teen Pregnancy: total rate	50.3/1,000	28.2/1,000	29.5/1,000	36.5/1,000
<i>By age group: 15-17</i>	14	4	10	13
<i>By age group: 18-19</i>	45	28	24	28
<i>Repeat pregnancies</i>	22%	21.9%	20.6%	12.2%
Diabetes: deaths	7	11	20	20
Dental Care: dentist ratio	1.65/10,000	1.8/10,000	1.9/10,000	1.85/10,000
Obesity	30%	30%	32%	32%

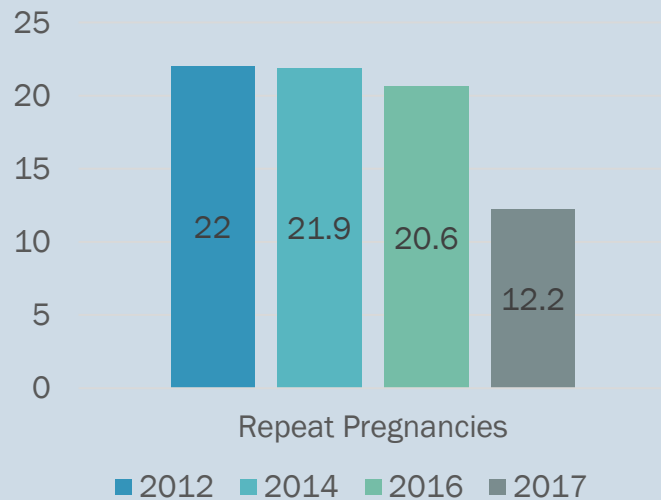
Trending Data: Graphs

■ Teen Pregnancy

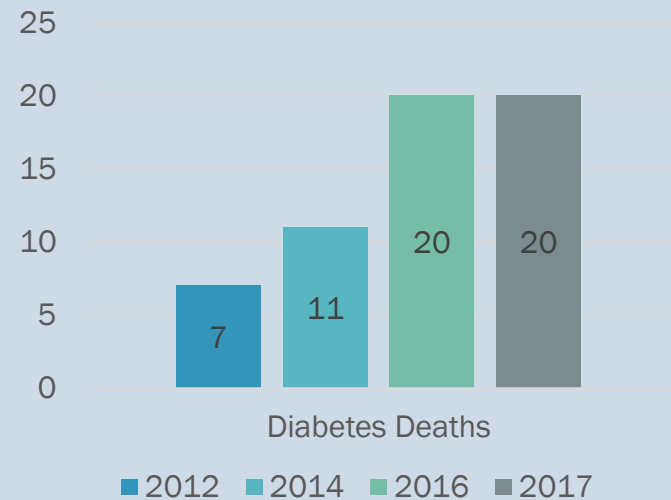


Trending Data: Graphs

Repeat Pregnancies

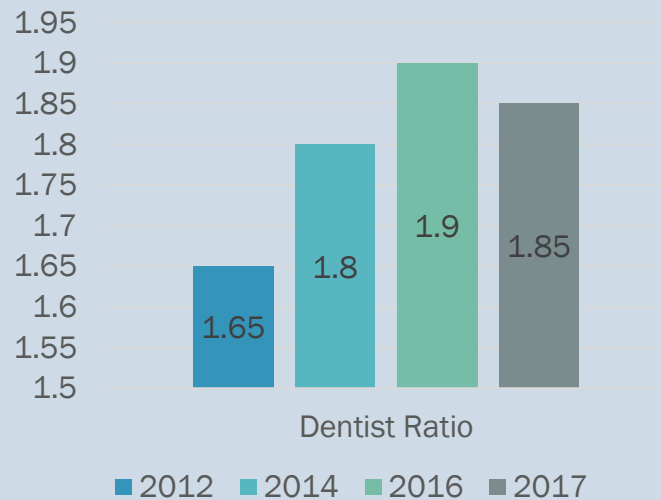


Diabetes Deaths

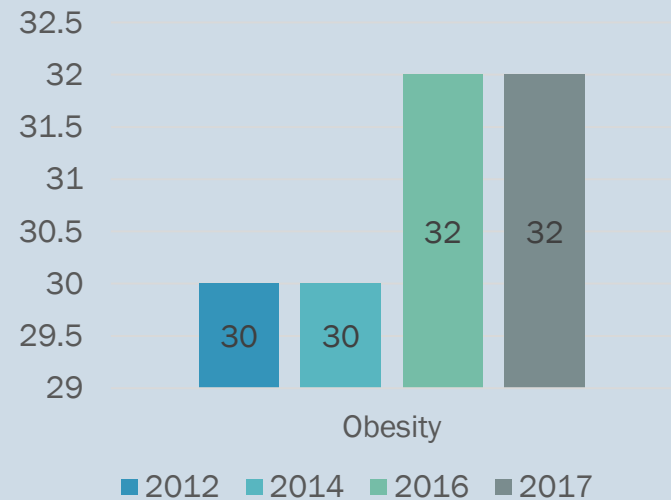


Trending Data: Graphs

Dentists



Obesity



COMMUNITY HEALTH ASSESSMENT: PRIORITIES, ACTIONS PLANS, & PROGRESS

Yadkin County SotCH Report

Priority 1

Lack of physical activity and physical activity opportunities in Yadkin County

Action Plan:

■ WalkWorks

- *By 2019, increase physical activity among 19-64 year olds by implementing evidence-based strategies that make walking in the community a safe and accessible pursuit. Program will reach 100 residents per year.*

Progress:

- *The Assistant Director (AD) and the Health Educator (HE) completed a walkability assessment and mapped the current marked walking route in Yadkinville*
- *The AD and HE also attended two planning meetings with local town officials*
- *Applied for a grant to fund progress, unfortunately was not funded.*
- *Held a planning/mapping meeting with the County GIS official*
- *Courtney Elementary held a school wide Bike & walk to school event by educating students on bicycle safety at the school site, and walking the school grounds to give the students more physical activity.*

Priority 2

Prescription medication abuse and accidental overdoses

Action Plan:

- Naloxone dispensing campaign
 - *By 2019, establish a working Naloxone dispensing program at the local health department, with an educational component. Evidence will show 6 kits will be dispensed per year over 4 years.*

Progress:

- *Developed and implemented a method to conduct on-site kit education and marketing*
- *Advertised in the local newspaper and partnered with local pharmacies to distribute educational rack cards.*
- *Distributed 2 kits*

Priority 3

Health issues related to chronic disease such as heart disease and diabetes

Action Plan:

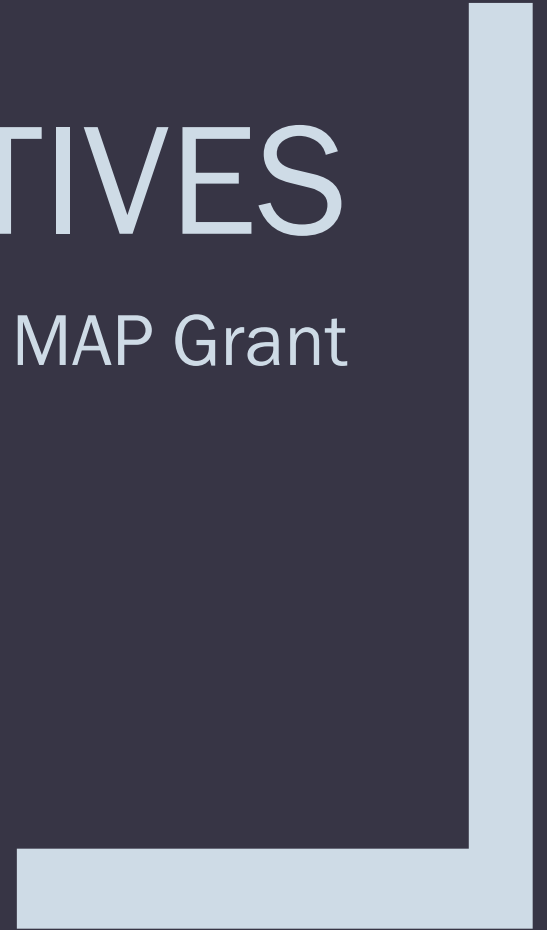
- Chronic Disease Self-Management
 - 65% of participants will report increased strength and stamina through better fitness within 6 weeks.

Progress

- *Have made a connection with another trainer located within the county with hopes to plan another available course in 2018*
- *The Health Educator is completing blood pressure checks at East Bend Senior Center*
- *Also provides physical activity at the Yadkinville and East Bend Senior Centers*

NEW INITIATIVES

Office of Rural Health MAP Grant



Sources of Information:

1. US Census QuickFacts
2. Annual Estimates of the Resident Population for Selected Age Groups by Sex for the United States, States, Counties and Puerto Rico Commonwealth and Municipios: April 1, 2010 to July 1, 2016
3. NC Department of Commerce, AccessNC
4. US Census American Community Survey 2012-2016
5. County Health Rankings
6. Feeding America, “Map the Meal Gap”
7. USDA: “Food Access Research Atlas”
8. NC Child, “Yadkin Child Health County Data Card”
9. NC Alliance for Health
10. NCIOM
11. State Center for Health Statistics
12. NC Injury & Violence Prevention Branch
13. NCDETECT data
14. ShiftNC.org
15. 2014 NC Health Professionals Data Book
16. 2015 NC-PedNESS



Yadkin County Human Services Agency

Jessica O. Wall, MPH

Assistant Director

jwall@yadkincountync.gov