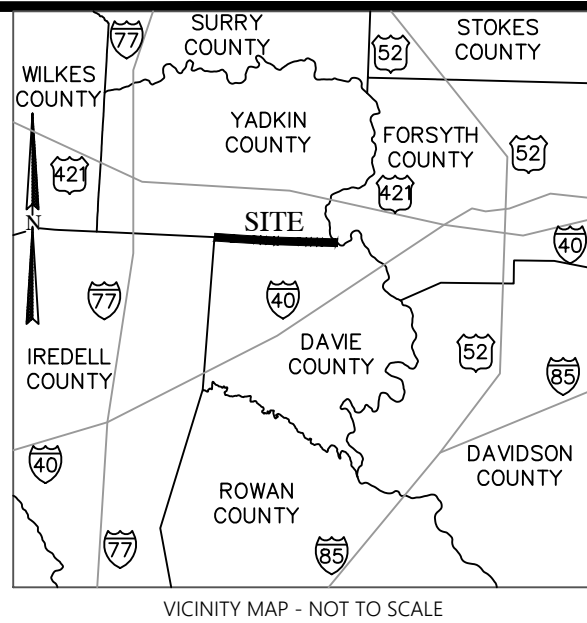
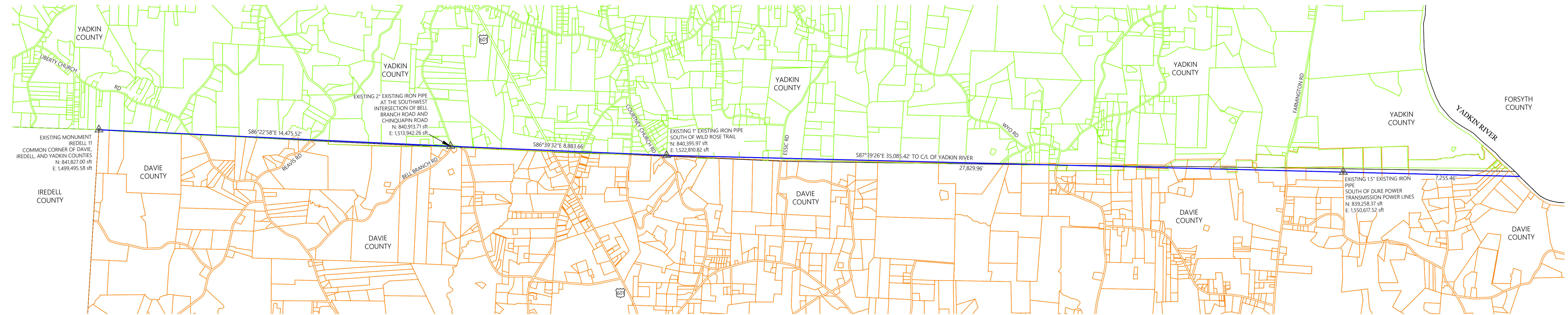


PRELIMINARY MAP
NOT FOR RECORDATION, CONVEYANCES, OR SALES



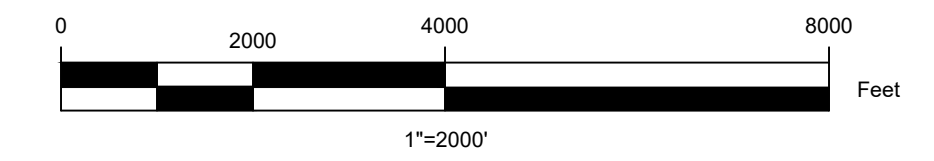
PER NC GRID NAD 83(2011)



LEGEND

USGS COUNTY LINE	—————
COUNTY LINE PER FIELD SURVEY(NCGS)	—————
DAVIE COUNTY GIS PARCELS	—————
YADKIN COUNTY GIS PARCELS	—————
NCGS	—————
U.S. SURVEY FOOT	—————

TOTAL LENGTH OF COUNTY LINE:
58,444.59 sft(11.1 MILES)



PRELIMINARY MAP
NOT FOR RECORDATION, CONVEYANCES, OR SALES

REVISION: COORDINATES FOR IREDELL 11 AND 1" EIP SOUTH OF WILD ROSE TRAIL UPDATED.

NORTH CAROLINA GEODETIC SURVEY
Department of Public Safety
Division of Emergency Management

CLAUDE BOWERS BUILDING, 4105 REEDY CREEK ROAD
RALEIGH, NORTH CAROLINA 27607 919 733-3636

PRELIMINARY PLAT OF RESURVEY OF

THE DAVIE AND YADKIN COUNTY LINE

STATE OF NORTH CAROLINA

DRAWN BY: DJF	CHECK BY: RBH
DATE: 03/03/2020, REV:8/17/2020	SCALE: 1"=2000'

SHEET 1 OF 1