



Progress on CHIPs

Priority 1: Substance Abuse

- Intervention: Youth Substance Abuse Interventions: HALO (children 3-6 years), Second Steps (Kindergarten-5th grade), and Too Good for Drugs (Kindergarten-12th grade)
 - Progress: This program is to be implemented by our community partner, Insight Human Services.
 - Second Steps
 - East Bend Elementary with (2) 5 th grade groups - with 40 students
 - Boonesville Elementary with (2) 5th grade groups - with 42 students
 - Lifeskills
 - Starmount Middle School with (2) 6 th grade groups - with 25 students (January-April 2021)
 - Starmount Middle School with (2) 7th grade groups - with 27 students (January-March 2021)
 - Starmount Middle School with (1) 6th grade group - with 29 students (October-December 2021)
 - Starmount Middle School with (1) 7th grade group - with 33 students (October-December 2021)
 - Too Good for Drugs
 - Starmount Middle School with (1) 8th grade group - with 30 students (October-December 2021)

Priority 2: Mental Health

- Intervention: Kaleidoscope Play and Learn
 - Progress: This program is to be implemented by our community partner, Smart Start of Yadkin County. Kaleidoscope Play and Learn coordinator held 7 group meetings in 2021, with her first group meeting on November 30, 2021. In this group, she had three parents and four children who have participated. The group meets weekly on Tuesday mornings from 10:00am. to 11:30am.

Priority 3: Chronic Disease

- Intervention: WIC Community Garden
 - Progress: Began distributing garden kits to interested participants. Had 38 responses to receive the garden kits. Out of the 38 interests, 21 individuals came to the WIC clinic to pick-up their kits.
 - Distributed about 150 peat pots with soil, seeds and information about the garden at the Jonesville Jubilee on 8/6/2021.
 - Have shared more than 30 pounds of garden grown foods with community members and Yadkin County employees.
 - With COVID halting WIC's plans to provide in person classes, 4 videos were added to the WIC Community Garden to offer information on planting, food safety and recipes.
 - The seed bank is starting to get some recognition and about 10 seed packets have been taken from the bank and will continue to get replenished.
- Intervention: Tai Chi for Arthritis and Fall Prevention
 - Progress: Program was implemented at the Yadkin Valley Senior Center located in Jonesville, NC. The Tai Chi program was offered/provided in a virtual format March 2021 through June 2021. Beginning in July 2021 through October 2021, Tai Chi was offered in-person and virtually on Mondays at 10:30am. The Senior Center was closed during the first part of the year. Typically there was 2-3 participants on average each week.

Morbidity and Mortality Changes Since Last CHA

Mortality:

Rank	Cause of Death	# of deaths	Unadjusted Death Rate (2015-2019)
	Total Deaths - All Causes	2243	1193.0
1	Cancer - all sites	472	251.1
2	Diseases of the Heart	460	244.7
3	Chronic Lower Respiratory Diseases	166	88.3
4	Cerebrovascular Diseases	120	63.8
5	Alzheimer's Disease	110	58.5
6	Diabetes Mellitus	95	50.5
7	All Other Unintentional Injuries	93	49.5
8	Pneumonia & Influenza	67	35.6
9	Nephritis, Nephrotic Syndrome, & Nephrosis	46	24.5
10	Septicemia	41	21.8

Child deaths - (2019) 50.3 child deaths per 100,000. This is an increase from 2018, which was 39.7 deaths per 100,000 (NC Child - 2021 NC Data Card).

Leading causes of death by age group:

- 0-19 year old group, the leading causes of death are birth defects, motor vehicle injuries, and other unintentional injuries.
- 20-39 age group, most top causes of death are related to motor vehicle injuries, unintentional injuries, and suicide.
- 40-64 age group, the top causes of death are cancer, disease of the heart, and other unintentional injuries.
- 65-84 age group (highest incidence of death), these are related to chronic disease such as diseases of the heart, cancer, and chronic lower respiratory disease.
- Source: State Center for Health Statistics: NC County Health Data Book - 2019

We have also attached the NC Statewide and Yadkin County trends in key health indicators (*State Center for Health Statistics - February 2019*). Some noteworthy data from this report includes:

- Age-adjusted diabetes death rate per 100,000 residents for 2013-2017 is 33.1. This is higher than the state rate of 23.3.
- Age-adjusted stroke death rate in Yadkin County has seen an increase from the previously reported years. From 2008-2012 the rate was 41.0, and for 2013-2017 it is 52.1 per 100,000 residents.
- Age-adjusted unintentional injury death rate (excluding motor vehicle deaths) has consistently been higher than the state rate since 2003. In the most recent report, the rate was documented at 45.1 per 100,000 Yadkin County residents as compared to the NC at 34.6 for the years 2013-2017.
- Age-adjusted suicide rates in Yadkin County have increased from the previously reported years. From 2008-2012 the rate was 13.1, and for 2013-2017 it was 18.9 per 100,000 residents. For 2013-2017, NC experienced a suicide rate of 13.3. The Healthy NC 2020 target was 8.3.

Morbidity:

Sexually Transmitted Diseases (NCEDSS, 2021)

- Chlamydia - 81 cases (decrease from 2020 with 103 cases)
 - Age range was between 15-39 years, with the average age being 24 years. 22 cases were between the ages of 13-19 (43% - increase from 2020 (25%)).
 - 79% were female.
 - 11 of the cases were pregnant, aged 15-33 years
- Gonorrhea - 27 cases
 - Age range was between 17-48 years, with the average age being 31 years. There were two teenagers.
 - 11 (48%) were female.
 - 1 of the cases was pregnant
 - Half of the cases were in their teens or 20's.
- Hepatitis C - Chronic - 52 cases (increase from 2020 with 39 cases)
 - Age range was between 20-70 years, with the average age being 42 years.

Emerging Issues Since Last CHA

The following areas are concerns, as the numbers continue to increase over time:

- COVID-19 - Cases continued to rise throughout 2021 for Yadkin County and the rest of the world. From January to December, there were 5,157 laboratory-confirmed positive cases and 51 deaths. The unemployment rate was 6.4 in January 2021 and finished the year at 3.9% (US Bureau of Labor Statistics).
- Suicide - Based on numbers above in our Morbidity and Mortality section, we have seen an uptick in suicide deaths in Yadkin County.
- Substance abuse/misuse - According to the NC DHHS Opioid Dashboard, the rate of opioid overdose ED visits among Yadkin County residents in 2021 was 178.4 per 100,000 residents. This was an increase from 2020, with 103.5 per 100,000 residents. In 2021, 238 Yadkin County residents with opioid use disorder (OUD) were served by treatment programs.
- Teen pregnancy - (2019) Adolescents between the ages of 15-17 years had a pregnancy rate of 15.9 per 1,000 (NC SCHS).
- Disconnected youth - This is defined as the percentage of teens and young adults ages 16 to 19 who are neither working nor in school. From the 2021 County Health Rankings, 22% are considered disconnected youth. This was an increase from 2020, which was 18%.
- Third grade reading level - (2018-2019) 59.9% of 3rd grade students scored proficient in reading. There was no change from the 2017-2018 year (NC Child).

New/Paused/Discontinued Initiatives Since Last CHA

Even with the continuation of COVID-19, we and our community partners were able to make progress towards implementation of our new CHIP initiatives.

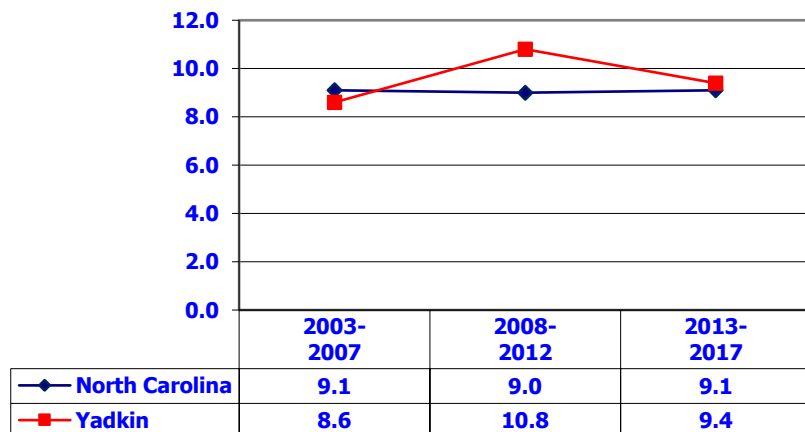
Actions

Name	Assigned To	Status	Due Date	Progress
------	-------------	--------	----------	----------

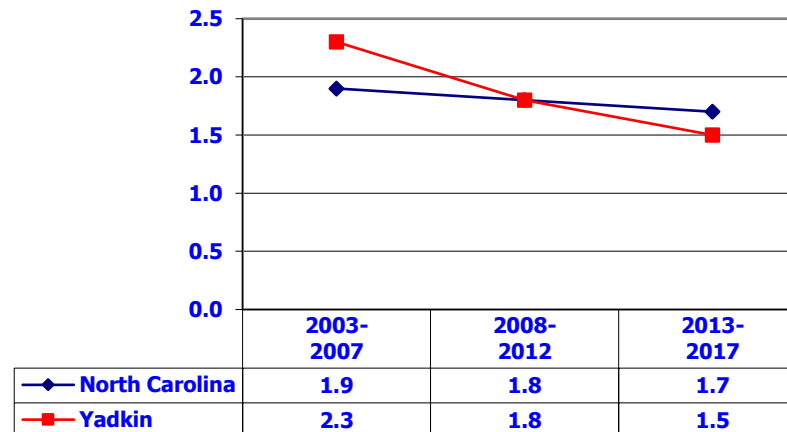
NORTH CAROLINA STATEWIDE AND COUNTY TRENDS IN KEY HEALTH INDICATORS: YADKIN COUNTY



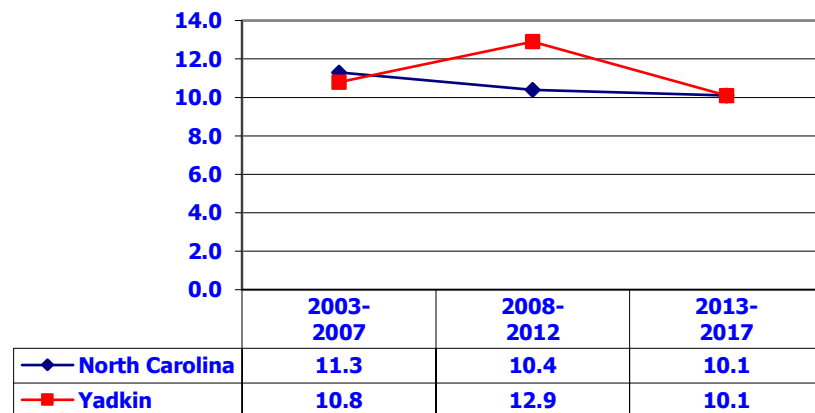
1. Percentage of Resident Live Births Classified As Low Birthweight (<2,500 grams/5 lbs 8 ozs)



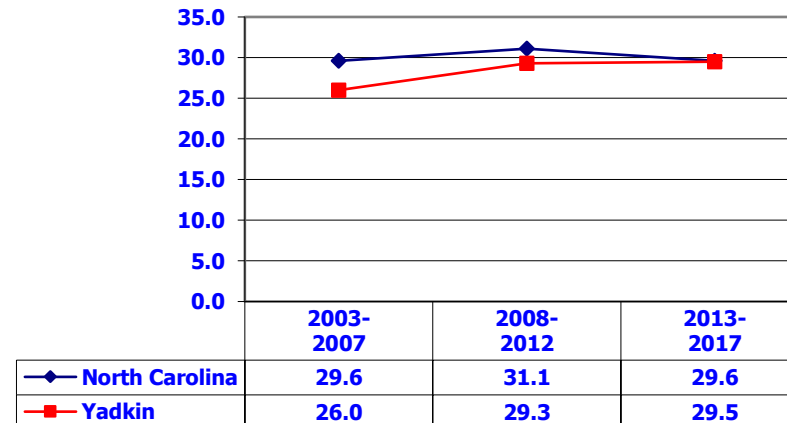
2. Percentage of Resident Live Births Classified As Very Low Birthweight (<1,500 grams/3 lbs 4 ozs)



3. Percentage of Resident Live Births That Were Premature (<37 Weeks Gestation)



4. Percentage of Resident Live Births Delivered by Cesarean Section



2017 County Population
37,774

% Ages 0-17:
21.1%

% Ages 65+:
19.7%

% NH White:
84.7%

% NH Af.Am.:
3.4%

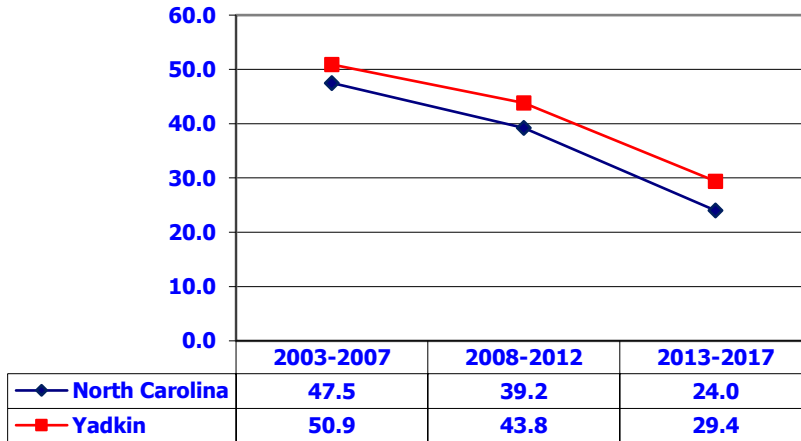
% NH Other:
0.6%

% Hispanic:
11.4%

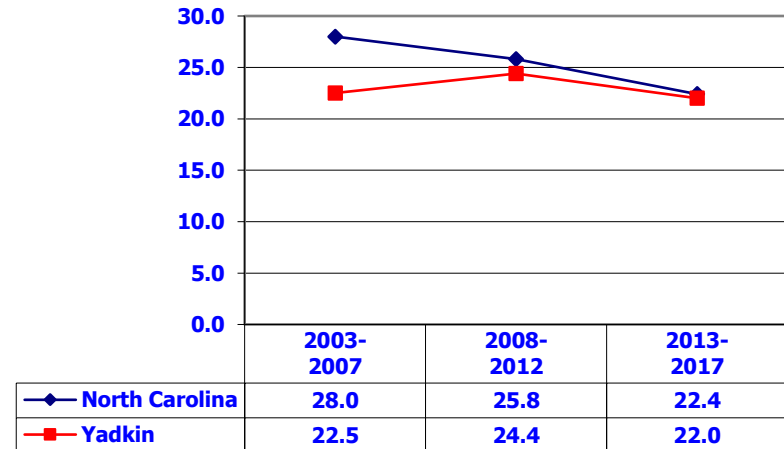
NORTH CAROLINA STATEWIDE AND COUNTY TRENDS IN KEY HEALTH INDICATORS: YADKIN COUNTY



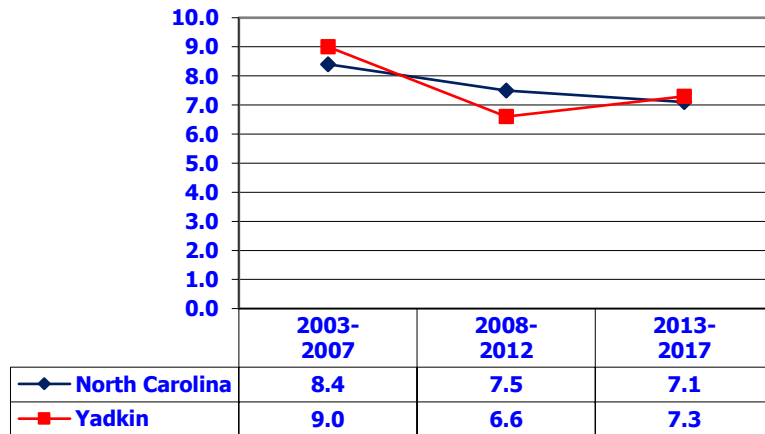
**5. Teen Births (Ages 15-19)
per 1,000 Female Residents**



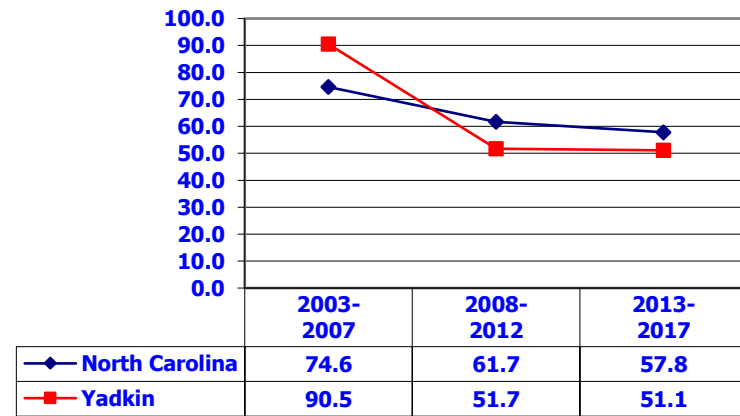
**6. Percentage of Teen Births (Ages 15-19)
that Were Repeat Pregnancies**



**7. Infant Deaths per 1,000 Live Births
(Healthy NC 2020 Target=6.3)**



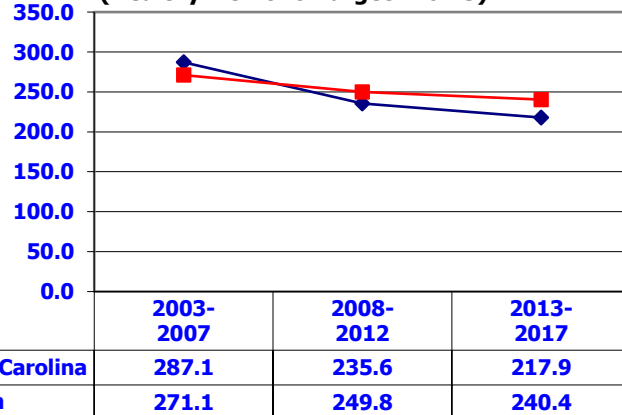
**8. Child Deaths per 100,000 Residents
Ages 0-17**



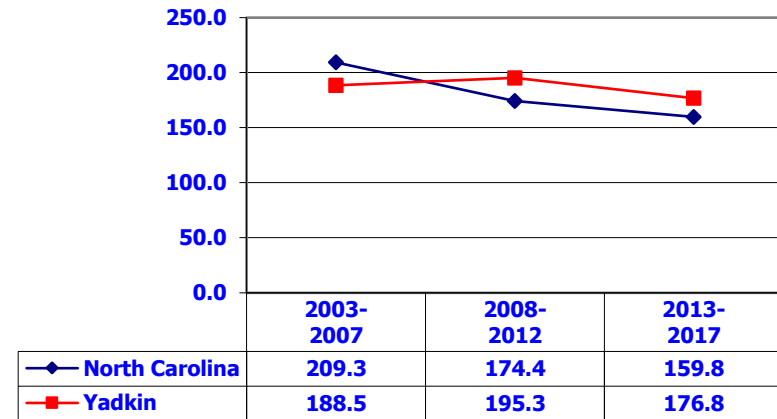
NORTH CAROLINA STATEWIDE AND COUNTY TRENDS IN KEY HEALTH INDICATORS: YADKIN COUNTY



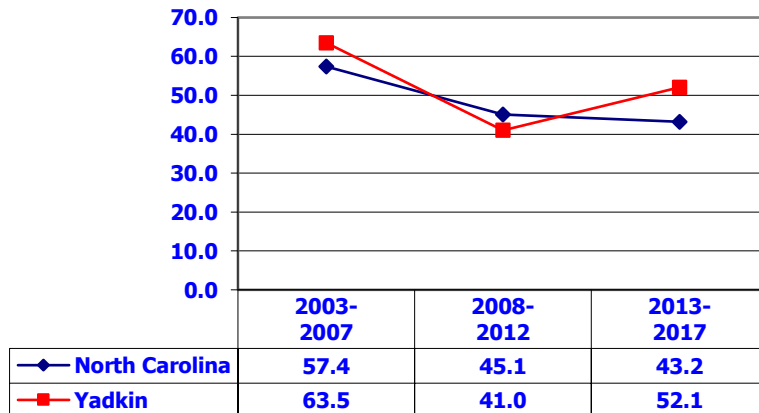
9. Age-Adjusted Cardiovascular Disease Death Rates per 100,000 Residents (Healthy NC 2020 Target=161.5)



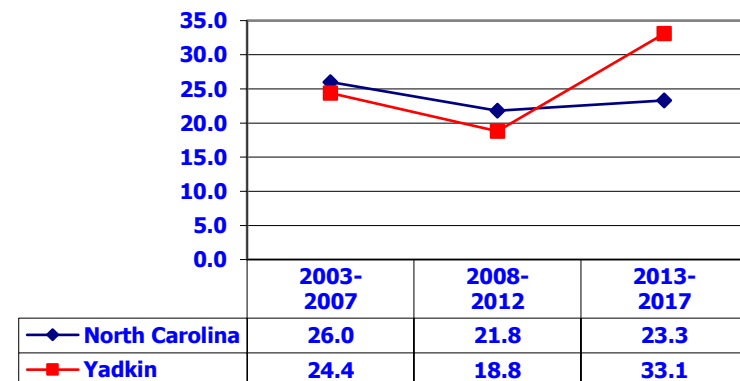
10. Age-Adjusted Heart Disease Death Rates per 100,000 Residents



11. Age-Adjusted Stroke Death Rates per 100,000 Residents



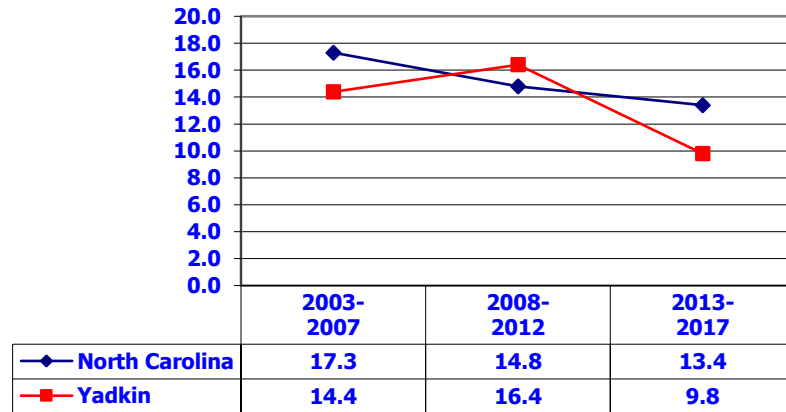
12. Age-Adjusted Diabetes Death Rates per 100,000 Residents



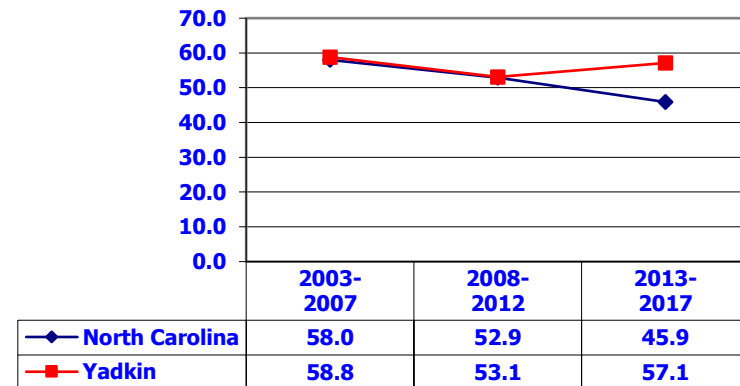
NORTH CAROLINA STATEWIDE AND COUNTY TRENDS IN KEY HEALTH INDICATORS: YADKIN COUNTY



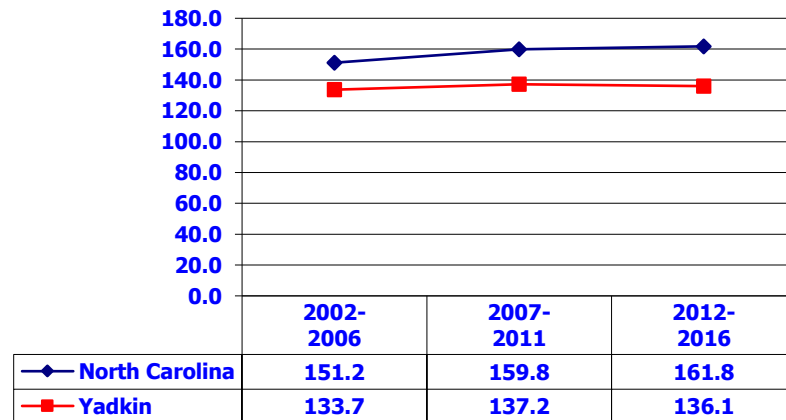
13. Age-Adjusted Colorectal Cancer Death Rates per 100,000 Residents (Healthy NC 2020 Target=10.1)



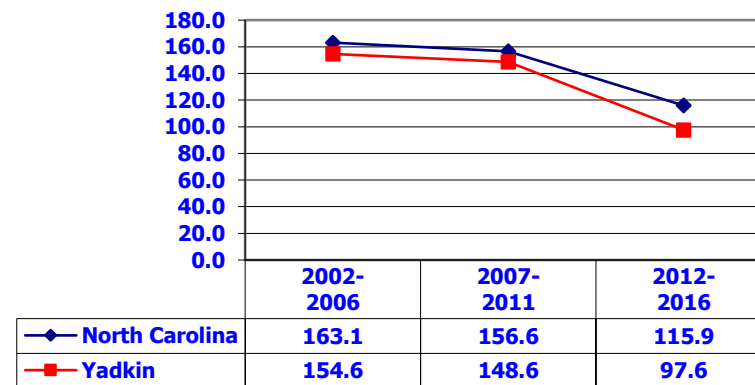
14. Age-Adjusted Trachea, Bronchus, & Lung Cancer Death Rates per 100,000 Residents



15. Age-Adjusted Female Breast Cancer Incidence Rates per 100,000 Residents



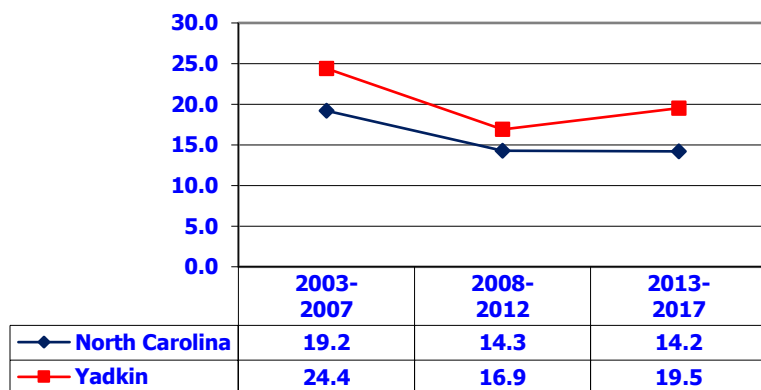
16. Age-adjusted Prostate Cancer Incidence Rates per 100,000 Residents



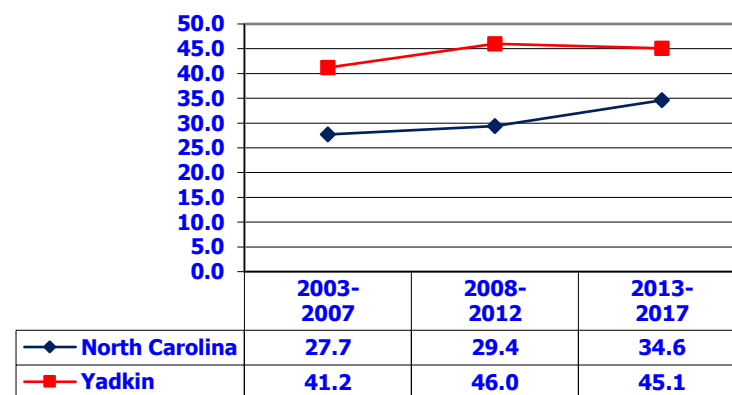
NORTH CAROLINA STATEWIDE AND COUNTY TRENDS IN KEY HEALTH INDICATORS: YADKIN COUNTY



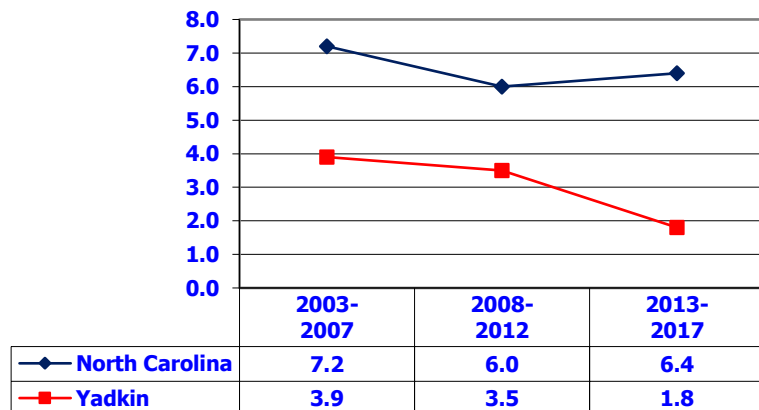
17. Age-Adjusted Unintentional Motor Vehicle Injury Death Rates per 100,000 Residents



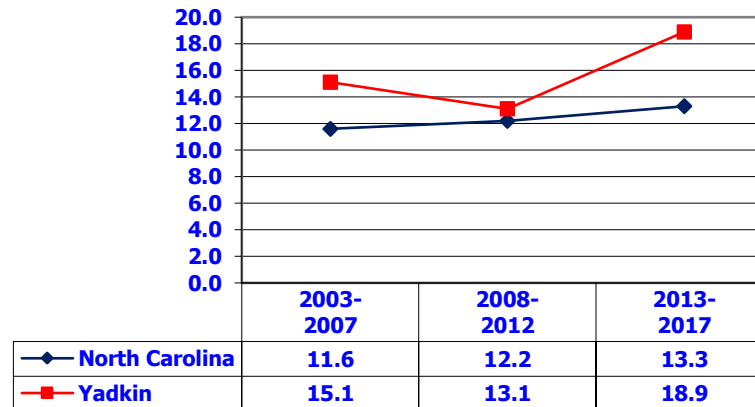
18. Age-Adjusted Unintentional Injury Death Rates per 100,000 Residents (excluding Motor Vehicle Deaths)



19. Age-Adjusted Homicide Rates per 100,000 Residents (Healthy NC 2020 Target=6.7)



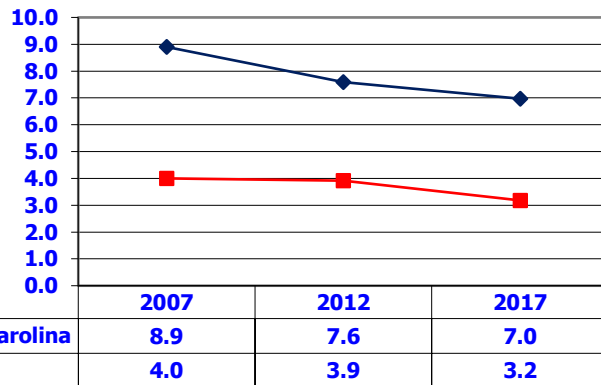
20. Age-Adjusted Suicide Rates per 100,000 Residents (Healthy NC 2020 Target=8.3)



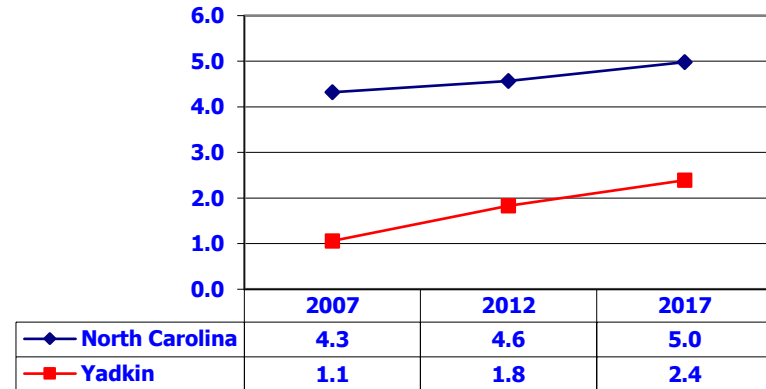
NORTH CAROLINA STATEWIDE AND COUNTY TRENDS IN KEY HEALTH INDICATORS: YADKIN COUNTY



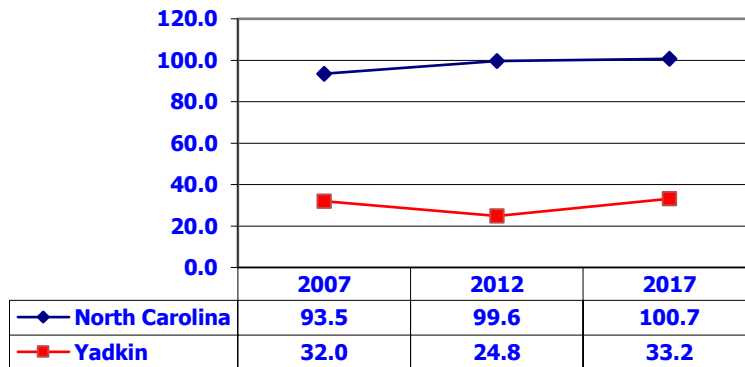
21. Number of Primary Care Physicians per 10,000 Residents



22. Number of Dentists per 10,000 Residents



23. Number of Registered Nurses per 10,000 Residents



24. Number of Physician Assistants per 10,000 Residents

