





ABBREVIATIONS

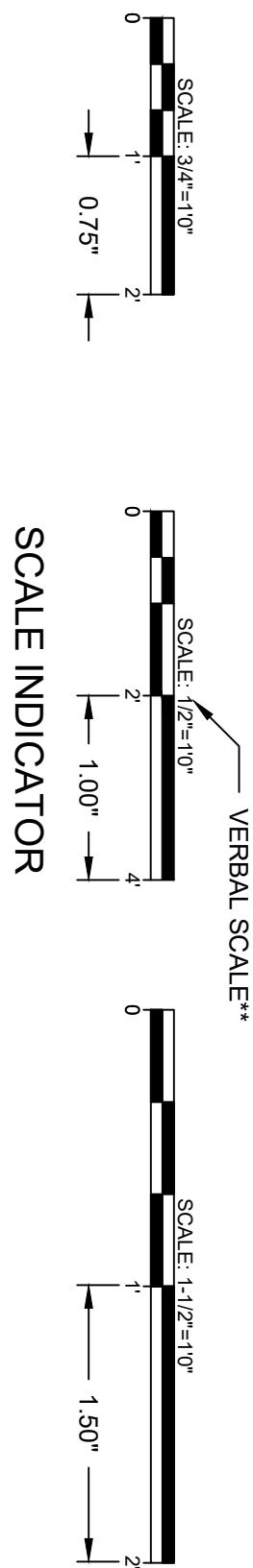
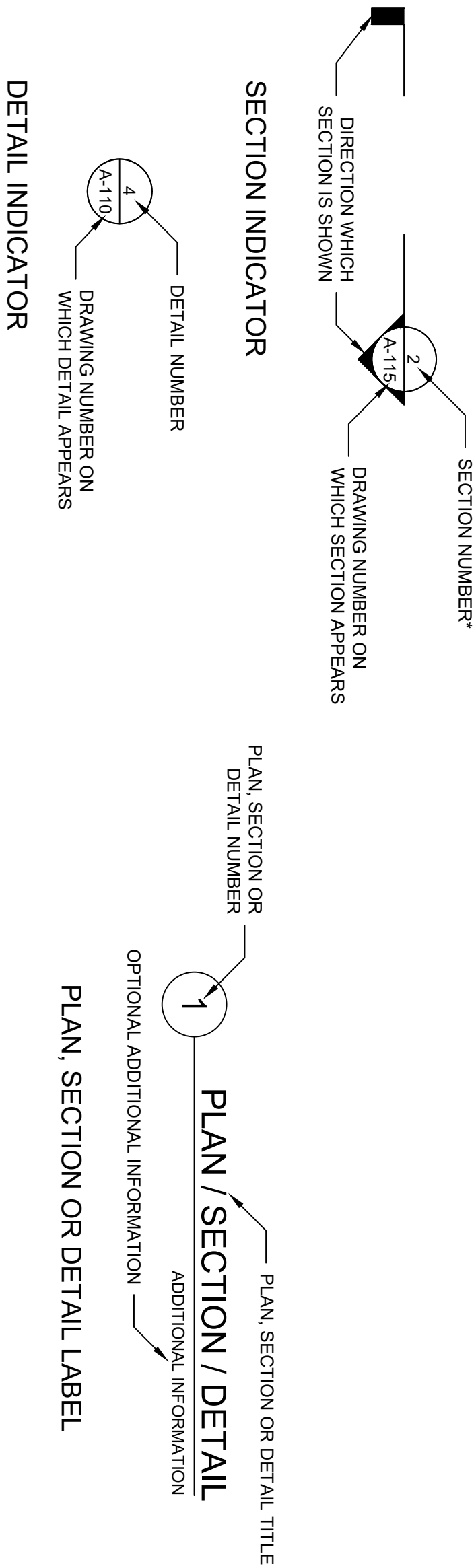
EL	ELEVATION
DIA	DIAMETER
ID	INSIDE DIAMETER
IN	INCHES
INV	INVERT
MAX	MAXIMUM
MIN	MINIMUM
NTS	NOT TO SCALE
OC	ON CENTER
R	RADIUS
RCP	REINFORCED CONCRETE PIPE
SPEC	SPECIFICATION
SS	STAINLESS STEEL
TYP	TYPICAL

LINEWORK AND HATCH

	CONCRETE STRUCTURE - EXISTING
	CONCRETE STRUCTURE - PROPOSED
	EDGE OF WATER
	STAGING AREA

SHEET INDEX	
DRAWING NUMBER	SHEET TITLE
G-01	COVER SHEET
G-02	STANDARD LEGENDS AND SHEET INDEX
G-03	SITE ACCESS AND STAGING PLAN
C-01	AS-BUILT DRAWINGS - EXISTING RISER LOCATION
C-02	AS-BUILT DRAWINGS - EXISTING RISER DETAILS
C-03	OVERALL PROPOSED REPAIRS
C-04	PROPOSED LOW STAGE TRASH RACK DETAILS
C-05	PROPOSED REPLACEMENT DETAILS
C-06	SEDIMENT REMOVAL PLAN AND SECTIONS

DRAWING SYMBOLS LEGEND



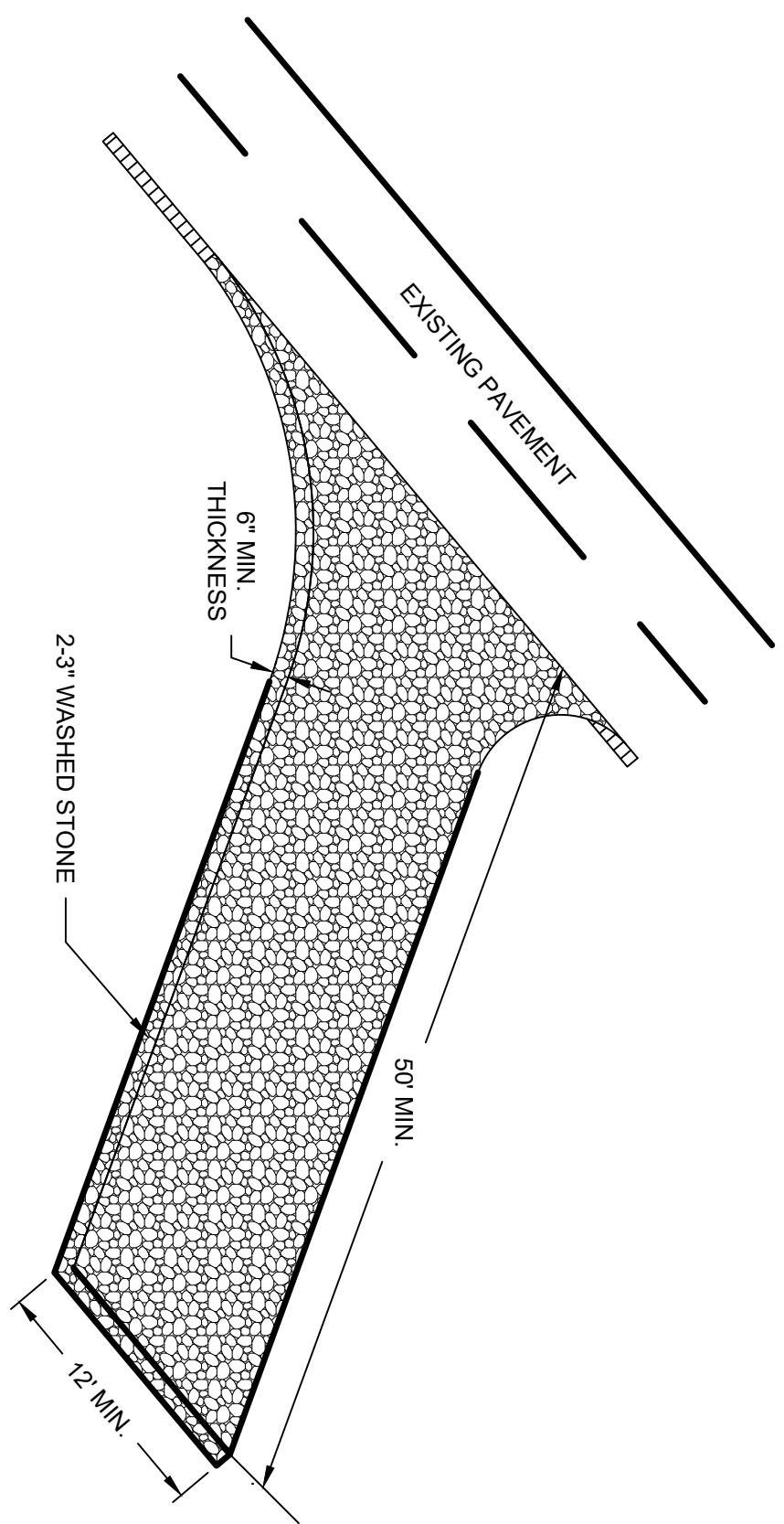
\* SECTION AND ELEVATION INDICATORS ARE SIMILAR. SECTION AND ELEVATION NUMBERS ARE COMBINED AND SEQUENTIAL ON EACH DRAWING.

\*\* VERBAL SCALE IS SHOWN FOR CONVENIENCE. ALL DRAWINGS SHOULD BE CHECKED TO ENSURE THAT THE SCALE BAR ITSELF IS SHOWN AT ACTUAL SIZE. DRAWINGS NOT PLOTTED AT THEIR INTENDED SIZE (ANSI D 22" x 34") WILL NOT SCALE PROPERLY.





1 SITE ACCESS AND STAGING PLAN VIEW



2 CONSTRUCTION ENTRANCE DETAIL  
N.T.S.

**CONSTRUCTION NOTES:**

1. CLEAR THE ENTRANCE AND EXIT AREA OF ALL VEGETATION, ROOTS, AND OTHER OBJECTIONABLE MATERIAL AND GRADE PROPERLY.
2. PLACE GEOTEXTILE OVER CLEARED AREA TO SEPARATE COARSE AGGREGATE FROM SUBGRADE.
3. PLACE WASH STONE TO THE SPECIFIC DIMENSIONS SHOWN ON THE PLANS, AND SMOOTH IT.
4. PROVIDE DRAINAGE TO CARRY WATER TO A SUITABLE OUTLET.
5. COARSE AGGREGATE: 2.3 INCH WASHED STONE
6. MINIMUM THICKNESS: 6 INCHES
7. MINIMUM LENGTH: 50 FEET
8. MINIMUM WIDTH: 12 FEET
9. GEOTEXTILE: WOVEN POLYPROPYLENE FABRIC DESIGNED FOR USE IN SUBGRADE AND BASE COURSE REINFORCEMENT APPLICATIONS SUCH AS TENCATE/MIKAPL HP270, OR APPROVED EQUAL.

**MAINTENANCE NOTES:**

1. MAINTAIN THE STONE PAD IN A CONDITION TO PREVENT MUD OR SEDIMENT FROM LEAVING THE CONSTRUCTION SITE. THIS MAY REQUIRE PERIODIC TOPDRESSING WITH 2-INCH STONE.
2. AFTER EACH RAINFALL, INSPECT ANY STRUCTURE USED TO TRAP SEDIMENT AND CLEAN IT OUT AS NECESSARY.
3. IMMEDIATELY REMOVE ALL OBJECTIONABLE MATERIALS SPILLED, WASHED, OR TRACKED ONTO PUBLIC ROADWAYS.
4. PLACE ADDITIONAL COARSE AGGREGATE AS CONDITIONS DEMAND.

**GENERAL NOTES:**

1. AERIAL PHOTOGRAPH OBTAINED FROM NC ONE MAP 2022.
2. ACCESS ROUTE TO BE RESTORED TO PRE-CONSTRUCTION CONDITIONS FOLLOWING PROPOSED RISER REPAIRS.
3. DRAINAGE AREA AT DAM IS 2.5 SQUARE MILES (1,600 ACRES).
4. CONTACT YADKIN COUNTY TO CONFIRM ACCESS ROUTE THAT WAS AGREED UPON WITH LANDOWNERS.

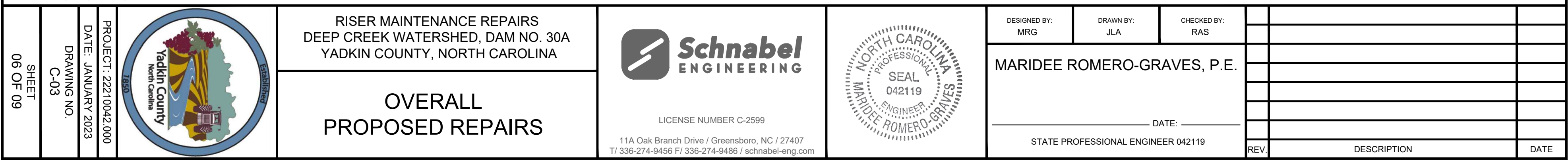


















REV.	DESCRIPTION	DATE



