



## Yadkin County Parks & Recreation Department



## Yadkin Memorial Park Master Plan

Adopted:  
November 3, 2025



# ACKNOWLEDGMENTS

## YADKIN COUNTY BOARD OF COMMISSIONERS

Chair David Moxley  
Vice Chair Frank Zachary  
Commissioner Cliff Collins  
Commissioner Tim Parks  
Commissioner Ricky Oliver

## ADMINISTRATION

Michael Silverman, County Manager  
Caleb Poplin, Parks & Recreation Director

## PLANNING TEAM

Benesch  
2359 Perimeter Pointe Pkwy, Suite 350  
Charlotte, NC 28208  
[www.benesch.com](http://www.benesch.com)  
704-521-9880

Jeff Ashbaugh, PLA  
Jon Wood, PLA







## TABLE OF CONTENTS

Project Overview.....	4
Site Analysis: Man-made Features.....	5
Site Analysis: Natural Features.....	12
Public Involvement.....	20
Program Description	25
Maintenance/Operations .....	31
Project Cost.....	35
Phasing.....	36
Appendix	





## PROJECT OVERVIEW

This picturesque and serene passive park surrounding Lake Hampton provides an ideal place for boating, fishing, hunting, camping, walking, playing disc golf, or simply sitting and enjoying the beauty of the park. In addition to the 138 - acre water supply and flood control lake, the county owns 495 - acres of land surrounding the reservoir. The 633 - acre property is in the southern central portion of Yadkin county, north of US 421 and west of the Town of Yadkinville. The reservoir retains a drainage area of 16,000 - acres, with a surface area of 138 - acres at a normal pool elevation of 860.3. The height of the dam is 72 feet and will provide a total water supply to the county of 518 acre-feet. The surrounding land has historically been used for agriculture or left undeveloped. Existing park development has occurred around the lake over the past ten years in two separate phases. For guidance on continuing development of the park, the county commissioned a master plan update for park development.

This updated master plan describes the physical characteristics of the site that influences future park design, identifies the public input gathered to help in facility selection and layout, and provides the process used for updating the original master plan. In addition, the master plan identifies construction cost and phasing strategy for future park development, as well as general considerations for park opportunities.





## SITE ANALYSIS: MAN-MADE FEATURES

The main entrance to the park and lake is at the end of Ladd Road. To enter the park, visitors take a short drive from the end of Ladd Road through the woods to the park entrance. The entrance is marked by a gate and park sign. Upon entering the park, a two-story farmhouse with an attractive barn can be seen on the right side of the park drive. A small parking lot is located here which serves as a trailhead for the parks trail system.

In total the park has seven gated access points from county or state-maintained roads.

1. Intersection of Old US Highway 421 & Cox Mill Road on Old US Highway 421.
2. 1800 feet west of the intersection of Old US Highway 421 & Cox Mill Road on Old US Highway 421.

3. 2800 feet west of the intersection of Old US Highway 421 & Cox Mill Road on Old US Highway 421.
4. End of Ladd Road.
5. 1200 feet west of intersection of Cox Mill Road & Ireland Road on Ireland Road.
6. 6400 feet east of intersection of Ireland Road & Longtown Road on Ireland Road.
7. 4800 feet east of intersection of Ireland Road & Longtown Road on Ireland Road.

Direct access to the region's major highways, US Highway 421 & US Interstate 77, and proximity to the central part of the county provides easy access to the park from most county residents, as well as regional visitors. See the Site Analysis map for access locations.

## Maintenance Facility

The existing park maintenance facility is located a short distance past the park entrance. The metal building was constructed with the first phase of park development in 2014. It is in good condition and has an office, restroom, and storage for park maintenance equipment.

## Main Lake Access Area

Continuing a short distance past the maintenance building, down the paved park drive leads to the main activity area for the park. The public lake access area is located along the western shoreline of the lake. Existing facilities include a large park building, a large parking lot for cars, and trucks with boat trailers, boat ramp, two (2) floating docks, playground, and two (2) stand-alone picnic shelters.

The upper picnic area located on the southern end of the parking lot consists of a large park building with a covered open air picnic shelter, office, park store, and restrooms. A small, 24' x 24', picnic shelter is located east of the park building with spectacular views of the lake. A small playground is located nearby with swings. All these facilities are in good condition, well maintained, and accessible. Due to the popularity of the park consideration should be given to expanding the playground and picnic facilities for this area of the park. The open space northwest of the parking lot provides a suitable area for future park development.



The lakefront is the center of boating and fishing activities at the lake. Directly adjacent the parking lot an existing boat ramp with vehicular drop-off, boat docks, and natural surface launch provide the means for boaters and fishermen to launch boats into and out of the lake.

Additionally, two (2) fishing docks are located several hundred feet away on either side of the boat ramp area and connected to the parking lot by a walking trail.

## Waterfowl Hunting/Duck Blinds

There are 6 waterfowl blinds on Lake Hampton, one of which is handicap accessible. The blinds have been carefully dispersed around the lake and used only during hunting season.

The scheduled use of the blinds is posted and controlled by permit by the County in conjunction with the North Carolina Wildlife Commission. All county, state, and federal regulations regarding the hunting and collection of waterfowl are enforced.

## Primitive Campground

Other existing facilities at the park include a dog park and campground. Situated on a ridge overlooking the lake and South Deep Creek at the westernmost end of the park, the campground is accessible by a gravel road on the left just past the maintenance facility. Campers drive past the dog park to the end of the road. A small parking lot and restroom are located at the end of the park road and provide parking for the campground.

Seven (7) primitive camp sites are located along the wooded hillside with views of the lake and South Deep Creek. Each camp site includes a fire ring, lantern holder, and a picnic table. One (1) of the sites is accessible for people with disabilities. The campground has access to the park's trail system. There is room to expand the campground to potentially include RV campsites.

## Dog Park

With the growing popularity of man's best friend. The dog park is located on the gravel road leading to the campground. This spacious fenced park accommodates both small and large dogs and has agility equipment for abilities of all levels.



## Trails

Walking is the most popular outdoor recreational activity in America. Walking or jogging along the edge of a beautiful 138 - acre lake provides an outstanding recreational experience. An 8-foot-wide asphalt trail circles the main lake access area recreation areas providing a 1.5-mile loop for walking and jogging. This paved trail connects all picnic shelters, parking areas, fishing piers and parking areas that serve the lake access site. It provides an opportunity to improve the health habits of Yadkin County citizens in a setting that will promote physical and emotional well-being.

In addition to the paved trail at the main lake access area, a 1.75-mile long, 8-foot-wide trail follows part of the shoreline and connects to existing recreation facilities and parking lots to the east end of the park. Constructing a new pedestrian bridge on the northwest end of the lake will allow a looped trail around the lake and improve connectivity to the northern side of the park. Given the size of the park there is ample opportunity to expand the parks trail system.

## Memorial Park East (Ireland Road) Access

The east end of the park can be accessed from Ireland Road. From Ireland Road a gravel park drive leads to a small parking area with restrooms, an 18-hole disc golf course, and the entrance to the 3.0-mile Ashley Ladd trail with an amazing view of the lake.

## Disc Golf

Disc golf is extremely popular in Yadkin County. In addition to the County's course at Yadkin County Park, there are a number of private courses in the area. The east end of the park is home to the 18-hole George Sappenfield disc golf course.

## Hood-Chamberlain Dam and Lake Hampton

The county began construction of the Hood-Chamberlain Dam in 2008 (formerly known as 5D Reservoir) with the impounding of South Deep Creek, a tributary of the Yadkin River. The existing dam is located on the east end of the park. Lake Hampton offers public lake access for a variety of water-based recreation activities including fishing, seasonal waterfowl hunting, and boating.



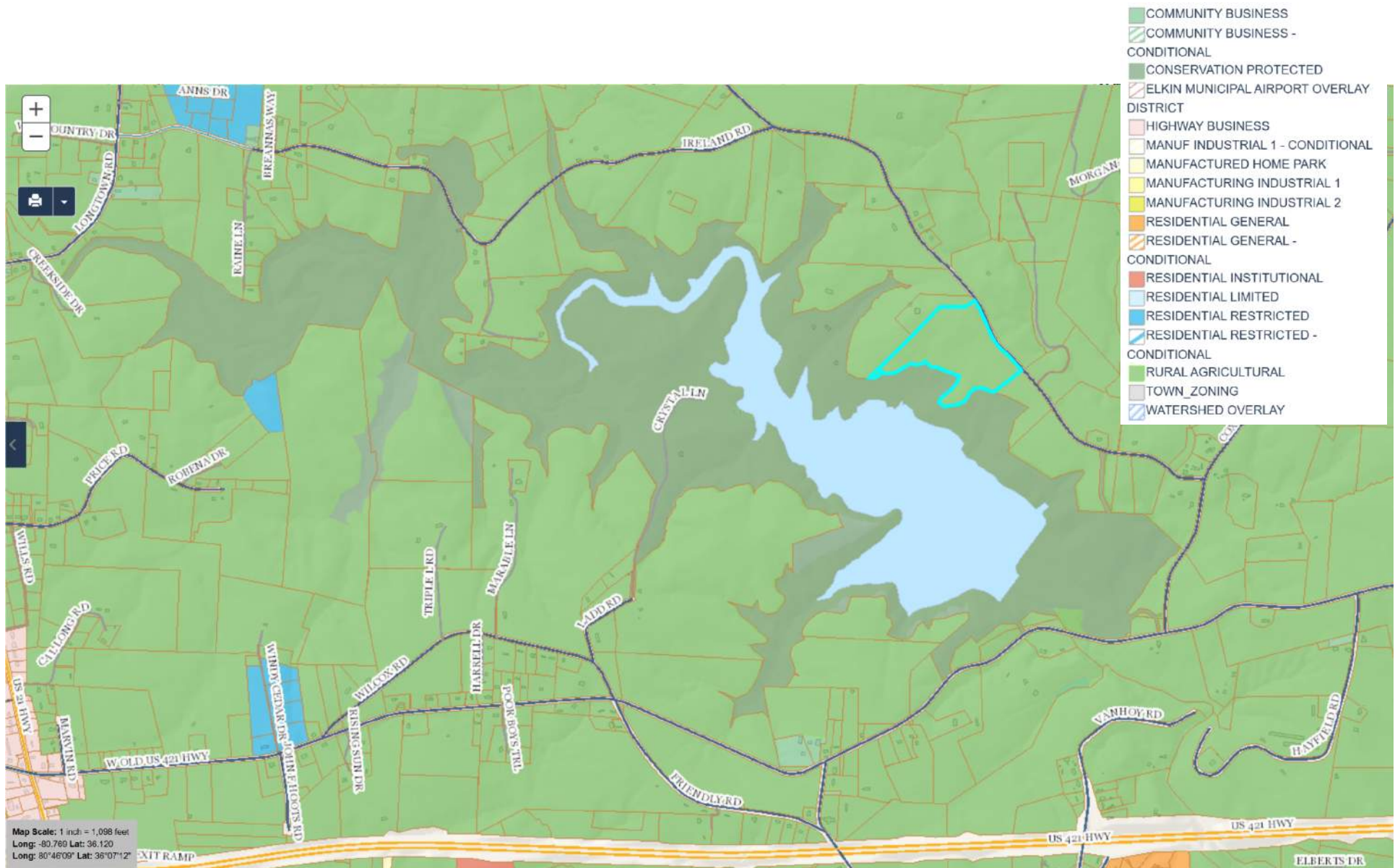
## Zoning/Regulatory Oversight County Zoning Regulations

The park is currently zoned Conservation Protected (CP). The purpose of Conservation Protected districts is to preserve and limit development within certain land and/or water areas that serve as wildlife refuges, possess natural beauty, are utilized for outdoor recreational purposes, provide needed open space, or are environmentally sensitive. Park, playground, and greenway development is permitted in the CP zoning classification.

The Conservation Protected zoning district minimum requirements are as follows:

- Minimum Lot Size: 5 acres
- Minimum Width: 150 feet
- Minimum Depth: 300 feet
- Minimum Front-yard Setback: 100 feet
- Minimum Side-yard Setback: 50 feet
- Minimum Rear-yard Setback: 100 feet
- Maximum Building Height: 50 feet

The property surrounding the reservoir property is currently zoned Rural Agriculture (RA).



## Yadkin Memorial Park Zoning Map



### County Watershed Protection Ordinance

The County has an adopted watershed ordinance that is designed to regulate and control development within the public water supply. The park property has areas in the following classifications:

- WS-III-CA (Critical Area) - Shown hatched in blue.
- WS-III-BW (Balance of Watershed)

Areas within the designation WS-III-BW (Balance of Watershed) must adhere to the following requirements:

- Non-residential development: 24% Built-upon Area
- Projects to the maximum extent are practicable, minimize built-upon surface area, direct storm water away from surface waters and incorporate Best Management Practices to minimize water quality impacts.

Areas within the designation WS-III-CA (Critical Area) must adhere to the following requirements:

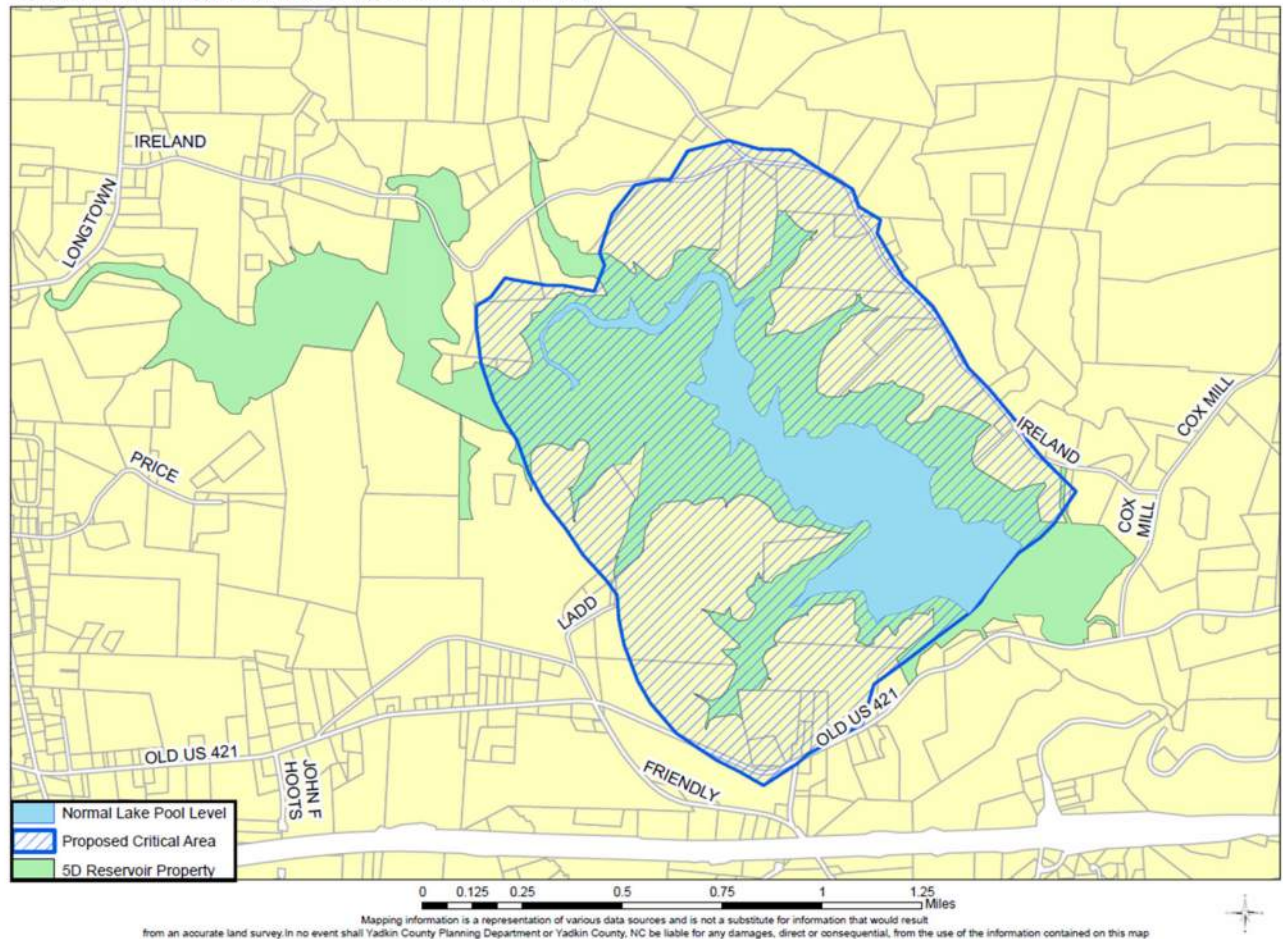
- Non-residential development: 12% Built-upon Area

### Buffer Areas Required:

- A minimum thirty (30) foot vegetative buffer for development activities is required along all perennial waters indicated on the most recent version of USGS topographic maps. Desirable streambank or shoreline stabilization is permitted.
- No new development is allowed in the buffer except for water dependent structures, and public projects • such as road crossings and greenways where no practical alternative exists. These activities should minimize built-upon surface area, direct storm water away from surface waters and incorporate Best Management Practices to minimize water quality impacts.

### 5D Critical Area/Yadkin Memorial Park

896 Acre Critical Area Adopted by Yadkin County Commissioners on 11/21/2011.



### US Army Corps of Engineers Regulations

As part of the construction of the Lake Hampton dam and reservoir (formerly 5D), Yadkin County is required to uphold the requirements set forth in the Army Corps of Engineers Section 404 permit #199700289. A meeting was held on October 26, 2011, with Pete Wall of Benesch (formerly Site Solutions), Jason Walker, Yadkin County Soil/Water Conservation Director, and Jean Gibby, USACOE, to discuss the requirements of the permit and impacts to the development of the park. Specific requirements for the Lake Hampton (formerly 5D) Reservoir site include:

- The county will provide 100-foot-wide buffers on either side of the streams and surrounding the impoundment, totaling 198.5 acres. Any encroachment into said buffer including trails will require the inclusion of additional acreage to equal a net of 198.5 acres of undisturbed buffer. Jean is going to investigate excluding trail use as an encroachment from the Conservation Easement.
- The county will execute and cause to be recorded a Conservation Declaration prohibiting those activities • listed in condition (g) of the USACOE permit. Any changes to the standard Conservation Declaration will require review and approval by the USACOE. Yadkin County will coordinate the execution of the Conservation Declaration with the USACOE.
- Creek/Stream crossings will have to be bridged as culverts would be considered a disturbance.
- No buffer is required along streams/creeks below the dam. These are exempt from the permit requirements.
- Any major impact areas, such as the park access site, should not count towards the required buffer area and should be compensated elsewhere on site. Sensitive areas that would be important for protection (such as wetland areas, wildlife corridors, etc.) will be identified and agreed upon by Yadkin County and USACOE to offset impacted areas to equal 198.5 acres.
- No additional permits or modifications to the existing permit are required by USACOE for temporary duck blinds on the reservoir.

### North Carolina Division of Water Quality

#### Recreational Use Regulations:

The state regulates the development of recreational activities on public water supplies under section 1200 Protection of Filtered Water Supplies. A meeting was held on November 3, 2011, with Pete Wall of Benesch (formerly Site Solutions), Bob Clark, and Jason Walker of Yadkin County, and Jay Frick, Cliff Whitfield, Tom Boyd, and Lisa Edwards of NC Division of Water Quality. The following is a summary of specific requirements included in Section 1200 (See Appendix) that would affect the development, as well as comments raised during this meeting.

- The proposed recreational activities on the reservoir must be approved by a resolution by the commission and approval from the NC Division of Water Quality.
- Only those recreational activities specifically authorized in the resolution will be allowed. No recreational activities shall be permitted within 50 yards of any public water system intake.
- Recreational activities shall be contingent upon the County to establish provisions for adequate sanitation • facilities, supervision, and police control to ensure the protection of the water quality.
- The plan must provide sanitary facilities for the collection of garbage and disposal of sewage without causing deterioration of water quality. The county must always maintain these facilities to prevent the pollution of the public water system.
- Fishing must be approved by a resolution. Specific regulations governing fishing include:
  - » Fishing will be permitted only from boats owned or controlled by the county and under the supervision and jurisdiction of a responsible representative of the county.
  - » Bank fishing may be permitted in restricted supervised areas with proper sanitation facilities when approved by the commission.
  - » Sufficient wardens and inspectors will always be employed to ensure that no acts of urination, defecation, or other acts which would defile the water supply are committed.
  - » Fishing docks will be provided by the county for docking fishing boats. Boats will only be allowed to enter and exit from a county owned ramp.



- Animals will not be permitted in the reservoir except for dogs for the express use of waterfowl retrieval during hunting season. Domestic animals within 50 feet of the normal pool elevation must be under direct supervision by a person and the activity is regulated by the county.
- Precautions shall be taken to control the drainage of waste from animal and poultry pens/lots.
- The county must not discharge any treated or untreated domestic sewage, industrial waste or by-products into the reservoir or stream tributary.
- Any residence, place of business or public assembly, located on a watershed shall be provided with a sanitary means of sewage disposal.
- Ground absorption sewage collection is outlined within NCDWQ Section 1200.
- Burial of carcasses should not be allowed on the county property or in the reservoir.
- The county must show how they will regulate any proposed recreational use on the reservoir to protect the water supply and the safety of the public. Any potential impacts should be addressed in the guidelines and how those impacts will be addressed and/or mitigated.

## State Water Quality Regulations:

According to the NCDENR Division of Water Quality Interactive Mapping program, the project site is not located within a state Phase II area. No state water quality/quantity permits would be required for this site at this time. This should be confirmed on a project-by-project basis.

## State Erosion Control Requirements:

The State of North Carolina's Department of Environmental and Natural Resources Division of Land Resources requires an erosion control permit for land disturbance over 1 acre. Erosion Control plans must be submitted to the regional office in Winston-Salem for review prior to any land disturbing activities. The County will be responsible to produce this plan and associated fees required by the state.

## Yadkin County Comprehensive Land Use Plan November 20, 2023

The Yadkin County Board of Commissioners has an adopted county land use plan designed to guide future development in the county. As a County service and amenity, Parks and Recreation is included in the recommendations of the plan. The area around Lake Hampton (formerly 5D Reservoir) is identified as a conservation area. The importance of this area's natural resources and the concern for protecting water quality is identified as a priority. This area is also identified as an area for development of new recreational, residential, and limits commercial uses. Specific recommendations for the Lake Hampton planning area include:

Objective One: Maintain an up-to-date County Parks and Recreation Master Plan that addresses safety and environmental concerns and focuses on cultural and economic development enhancement.

1. Support efforts to develop low impact recreational facilities (fishing, hiking, canoe/kayaking, camping, etc.) around existing and proposed reservoir sites.

Objective Two: Encourage collaboration with Towns and community organizations to provide recreational facilities available to all citizens and visitors and that capture the economic and cultural benefits.

Objective Three: Identify recreational tourism opportunities along the Yadkin River that can be promoted for economic advancement.

Objective Four: Work with regional organizations (Yadkin Riverkeeper, Yadkin Valley Heritage Corridor, paddle groups, etc.) to identify additional river access points for canoe/kayak entry and develop amenities for visitors (parking areas, restrooms, signage, etc.).

Careful development of the land surrounding the reservoir will facilitate many of these recommendations.

Properties adjoining the reservoir property are currently used for residential homes, agriculture production and/or are undeveloped land.



## SITE ANALYSIS: NATURAL FEATURES

### Landform/Topography

The landform of the reservoir site varies from flat riparian areas to wooded steep slopes. There are approximately 5.3 miles of shoreline along the 138 - acre reservoir. The elevation change along the main channel of South Deep Creek through the outlet structure of the dam is approximately 72 feet in elevation.

There is a large area along the northern shore of the reservoir that was the borrow area for the earthen portion of the dam. The area has flat to moderate slopes.

The wooded areas on the site are mostly steep between 10% with some areas greater than 20%. Further development of these areas is limited due to the elevation change and steep topography that will require extensive grading and drainage design. The open fields along the

perimeter of the reservoir and South Deep Creek are flat and are suitable for recreational development.

The site analysis map at the end of this section identifies slopes of various categories for all property surrounding the reservoir.

### Hydrology

A major component of the park site is hydrology. The site has significant hydrologic features including Lake Hampton, South Deep Creek, streams, and wetlands.

### Reservoir

Lake Hampton itself detains a 25 square mile watershed. It has a surface area of 138 - acres at a normal pool elevation of 860.3' and has a storage volume of 518 acre-feet.



### Streams

A major tributary of the Yadkin River, the South Deep Creek waterway, once bisected the site and is the major water source for Lake Hampton. The site's remaining portion of South Deep Creek is approximately 2000 linear feet and averages 50' across with steep, sandy banks. In addition to this main creek, there are also several other named and unnamed tributaries on the park site totaling 23,400 linear feet. These range from minor drainage ways to perennial streams as indicated by current USGS maps.

### Wetlands

This site has not been surveyed for wetlands. However, due to the significant amount of low flood prone land along the main channel of South Deep Creek, it is assumed that a number of areas are wetlands. A wetlands delineation will be needed prior to any construction to confirm any jurisdictional drainage areas.

### Soils

A soils analysis was done on the Natural Resource Conservation Service Web Soil Service (WSS) to help determine development limitations of soil for camp areas, paths and trails, picnic areas, playgrounds, and septic field development. The following is a summary of those findings:





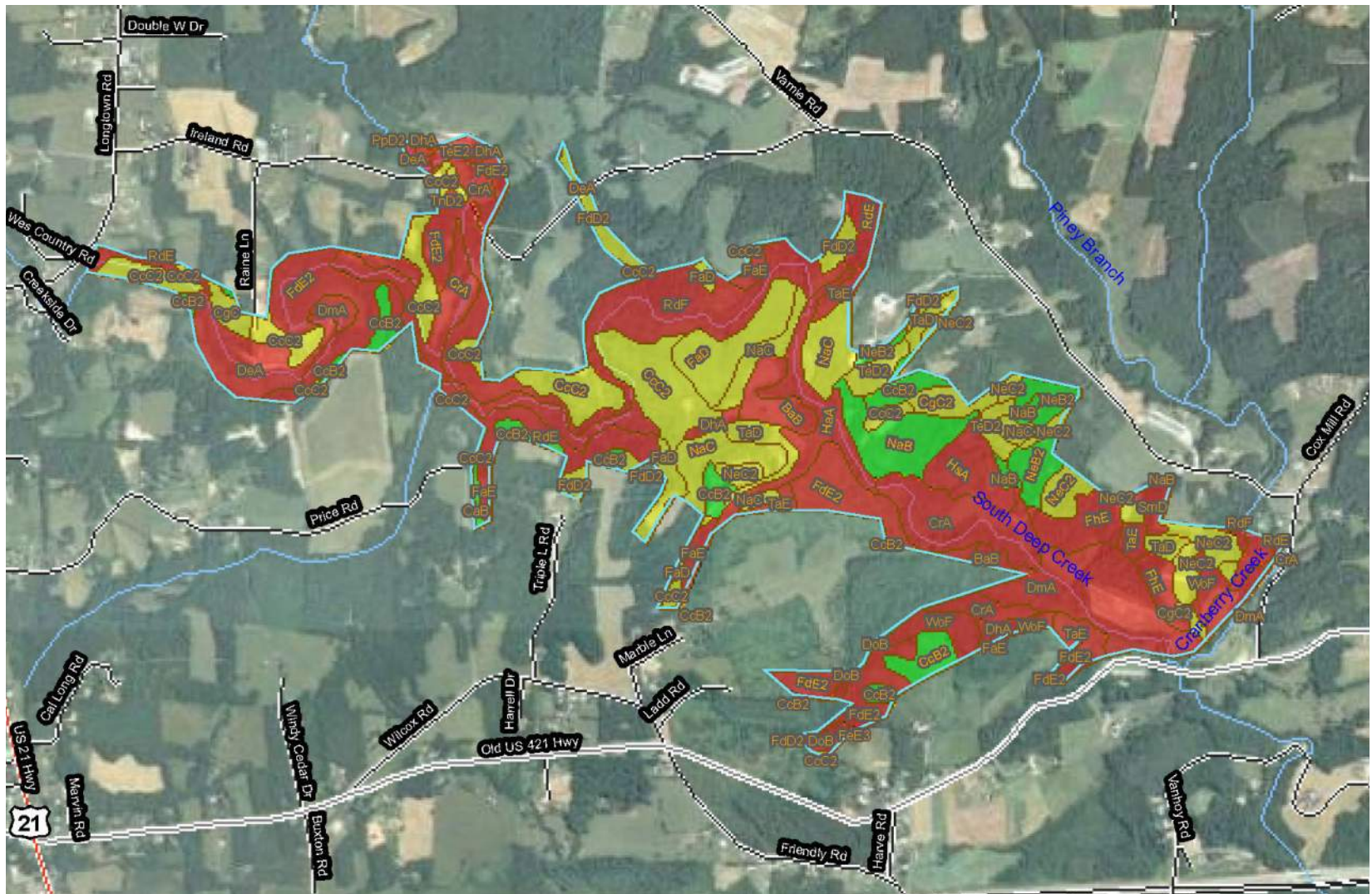
## Camping Areas

Camping areas are tracts of land used intensively as sites for tents, trailers, campers, and the accompanying activities of outdoor living. Within the study area for the access park off Ladd Road most of the soils are classified as “not limited” Clifford sandy clay loam (CcB2) and “somewhat limited” (NaC, TaD, FaD, CcC2) for this type of development. Camping area activities should be located within these areas where it is possible to minimize the requirements for additional engineering and design. Areas shown as “very limited” (DhA, BaB, HaA, FdE2, TaE, RdF) should be avoided for these uses.

**Red** represents areas of very limited development potential.

**Light Green** represents areas of somewhat limited development potential.

**Dark Green** represents areas of not limited development potential.

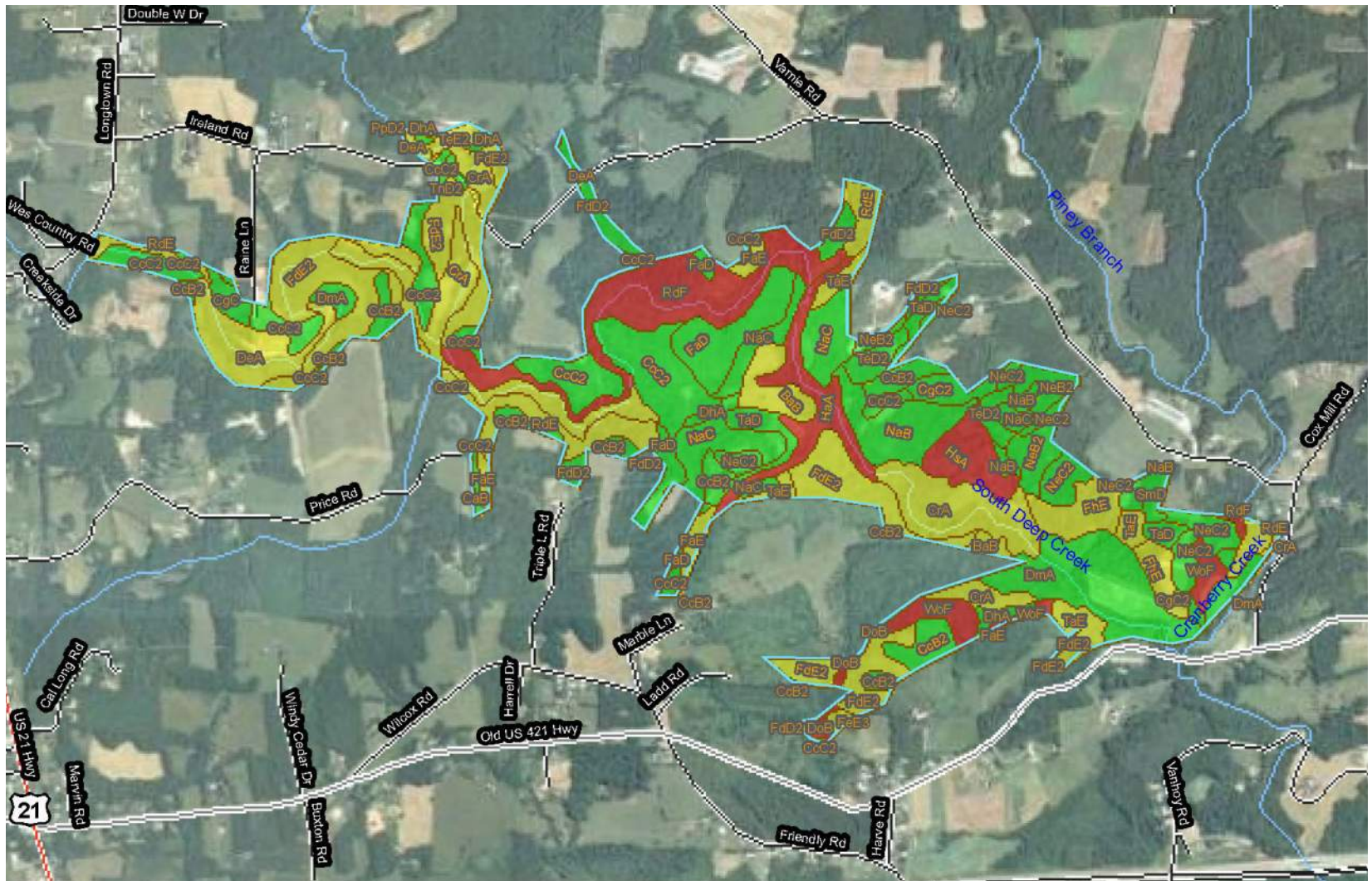




Red represents areas of very limited development potential.

**Light Green**  
represents areas of  
somewhat limited  
development  
potential.

**Dark Green**  
represents areas  
of not limited  
development  
potential.

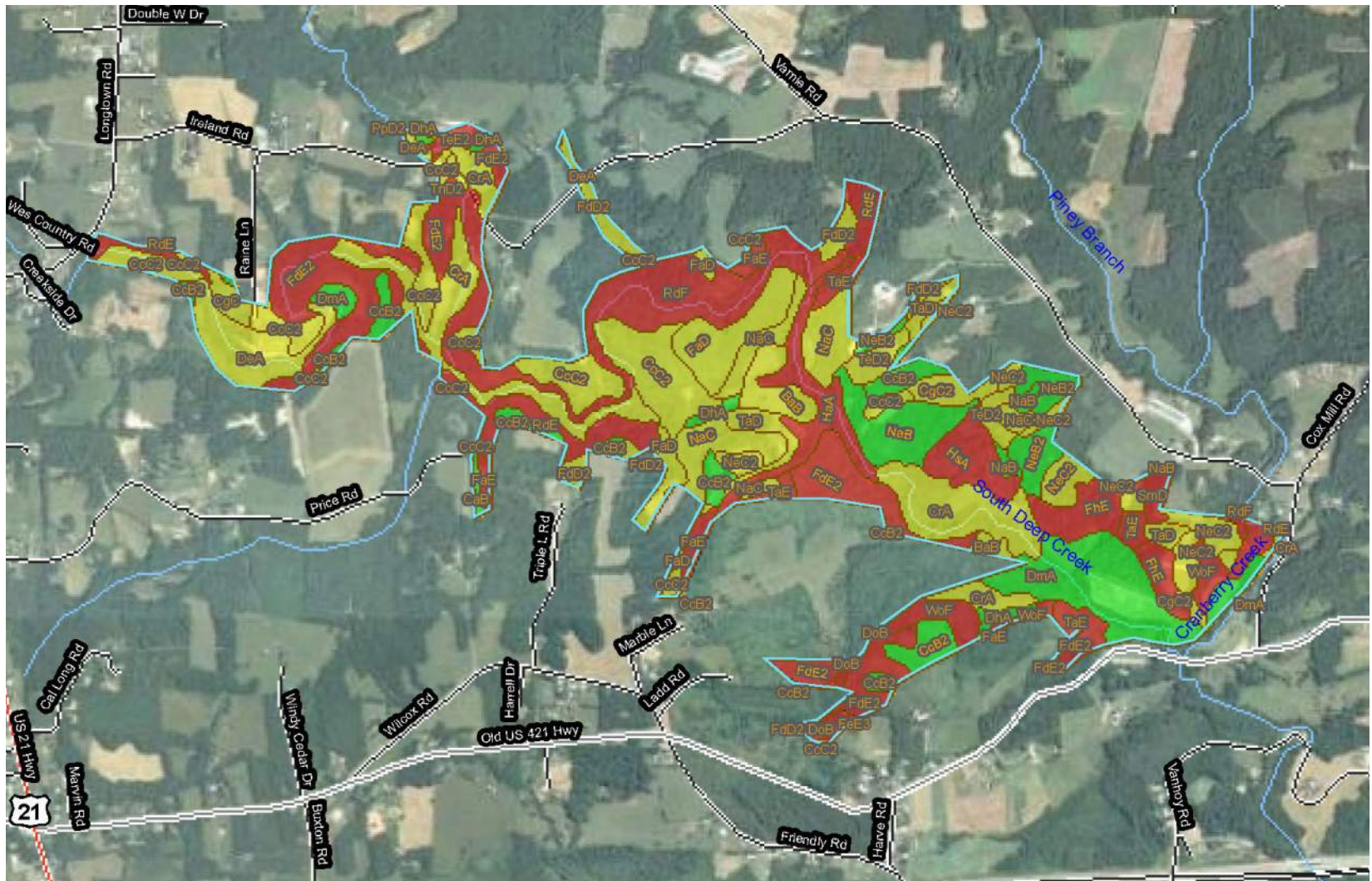




Red represents areas of very limited development potential.

**Light Green**  
represents areas of  
somewhat limited  
development  
potential.

**Dark Green**  
represents areas  
of not limited  
development  
potential.





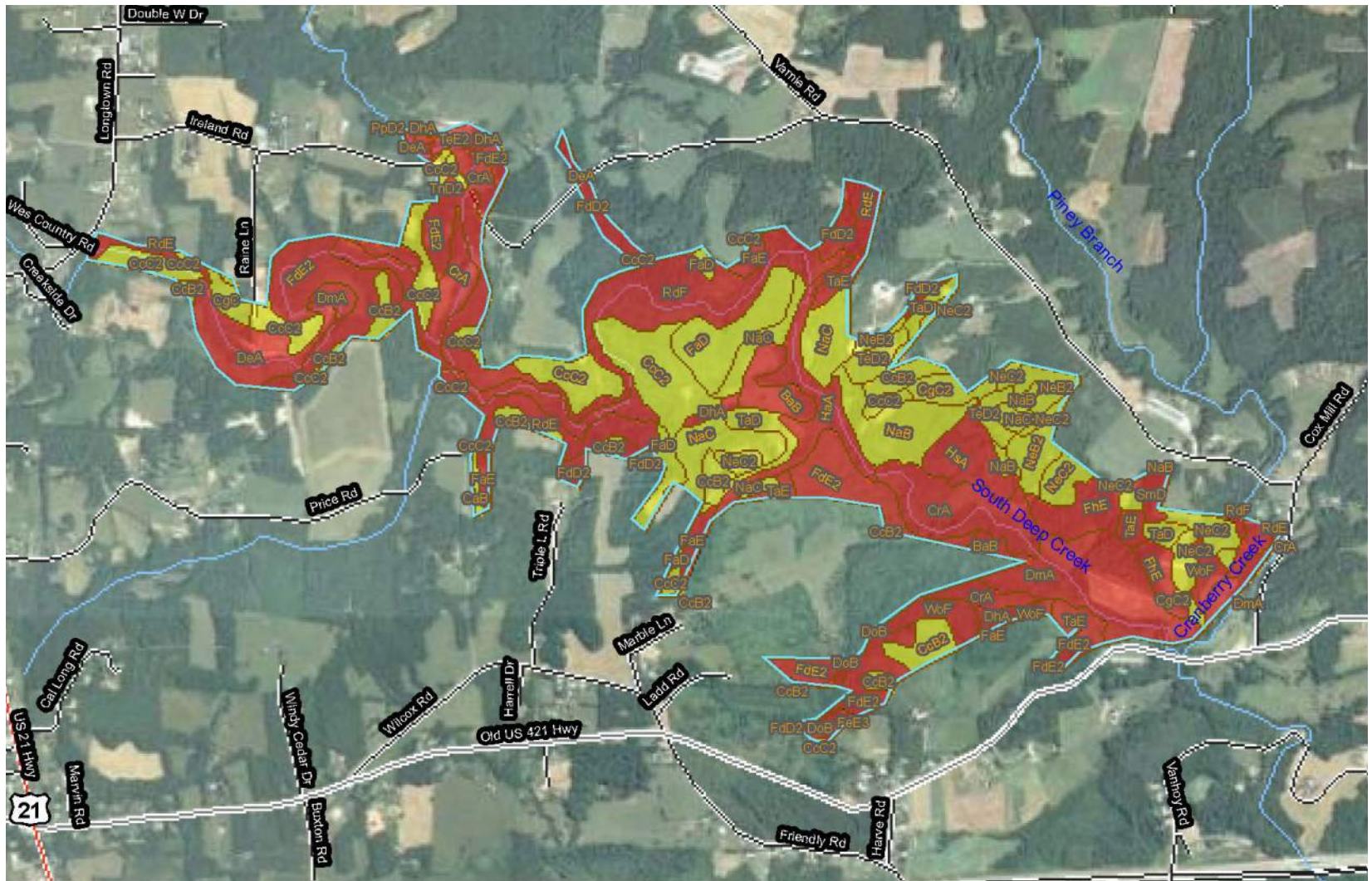
### Septic Field Development

Septic tank absorption fields are areas in which effluent from a septic tank is distributed into the soil through subsurface tiles or perforated pipe. The ratings are based on the soil properties that affect absorption of the effluent, construction, maintenance of the system, and public health. Soil suitability for septic field development in the access park area off Ladd Road were determined to be Banister fine sandy loam (BaB); classified as “very limited” due to depth of saturated water, slow water movement, and flooding. Soils classified as “somewhat limited” are Toast fine sandy loam (TaD), Nathalie fine sandy loam (NaC), Nathalie sand clay loam (NeC2), Clifford sandy clay loam (CcB2) due to steep slopes and slow water movement, slope, and slow water movement. As new restroom facilities are considered for the park the soil needs to be carefully investigated prior to development to confirm soil suitability/feasibility for on-site septic systems.

**Red** represents areas of very limited development potential.

**Light Green** represents areas of somewhat limited development potential.

**Dark Green** represents areas of not limited development potential.





If additional restroom facilities are proposed at other park areas, they should be located within soil types that have been identified as “somewhat limited” to minimize any additional costs associated with pumping and or additional engineering and design considerations. Additional soils testing will be required for any proposed septic tank absorption fields.

## Significant Natural Communities: Vegetation

Although vegetation on the site is diverse, there are several main vegetation areas including open fields (previously disturbed sites), upland woodlands, and riparian areas.

Pasture habitat/open fields make up approximately 155 acres of the property. The pastureland has not been intensively managed, and the vegetation has shifted from a cool season grass monoculture to a mixture of grasses and forbes. Woody vegetation has not become established. The borrow areas are also included in this vegetation type. Borrow areas are areas from which the earth has been removed (borrowed) and used in another location to form the earthen dam. These areas are open and have been seeded with grass.

Upland woodlands make up approximately 182 acres of the property. These include forested portions of the site located along upland areas that contain a dense canopy of native tree species predominately made up of mixed pines and hardwoods. Understory and groundcover vegetation are comprised of mostly deciduous shrubs and small deciduous trees.

Riparian vegetation areas make up approximately 175 acres of property. Riparian areas are those areas located within close proximity to streams, creeks, and ponds on the site. Most of the riparian areas are made up of mixed hardwoods, deciduous shrubs, and understory grasses and perennials.

## Common Trees:

- Shortleaf Pine
- White Oak
- Hickory
- Virginia Pine
- Red Oak
- Maple

## Significant Natural Communities: Wildlife

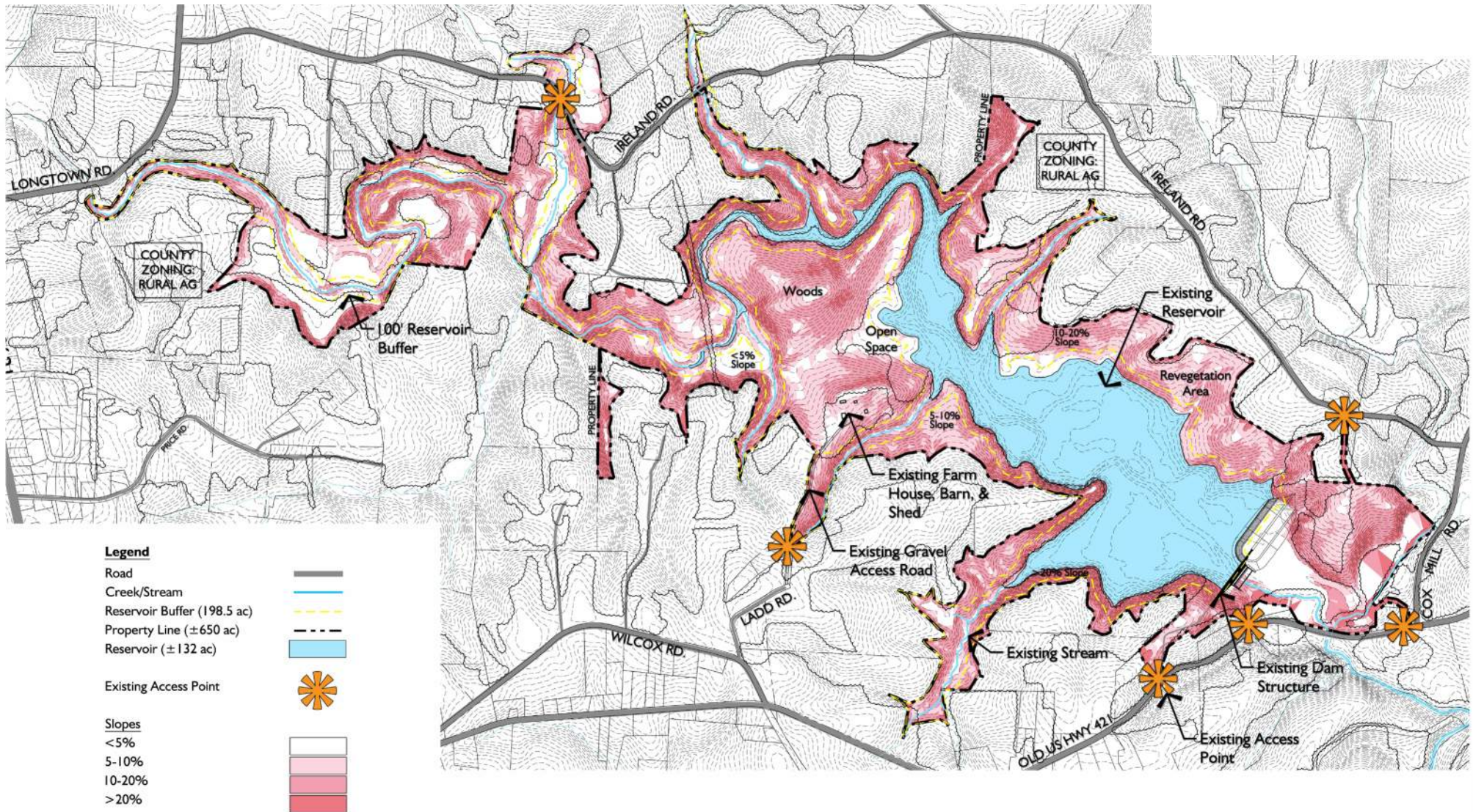
Due to the presence of South Deep Creek and surrounding woodlands, an abundant and diverse population of wildlife can be found in and around Lake Hampton.

Examples include, but are not limited to:

- Beaver
- Raccoon
- Bluegill
- Deer
- Turkey
- Channel Catfish
- Crappie
- Bass
- Duck Squirrel
- Largemouth Bass
- Mourning Dove
- Redear Sunfish











## PUBLIC INVOLVEMENT

### Public Input

As part of the master planning process, County staff and the planning consultant developed a methodology for obtaining public input through a series of public meetings and a citizen's survey handed out in the public meetings and at other county events.

### Community Workshop

#### Park & Recreation (Yadkin Memorial Park) Master Plan Update Meeting Minutes

Thursday, April 18, 2024

4:30-6:30 pm

A Community Workshop was held on April 18, 2024 from 4:30-6:30 pm in the Yadkin County Agricultural & Educational Building to gather citizen input on the Yadkin Memorial Park master plan update for Yadkin

County. The workshop was a drop-in event with approximately fifteen (15) attendees that signed in for the workshop. There were also Town staff that dropped in during the workshops.

After signing in, attendees were invited to review the following exhibits:

- Map of the County showing the locations of all parks and nearby recreation offerings
- Listing Board of the potential new activities and improvements for the park
- Representative images of recreational activities and amenities
- Comments board for participant write-in
- Original Park Master Plan and Enlargements

Participants were asked to vote on preferred recreation activities and improvements that they feel the Yadkin County should be developed



or made for the park. They were allowed to vote on one (1) activity or improvement they felt was the most important for the County to offer and up to three (3) activities/amenities/improvements that they felt were important for the County to offer. Results are as follows, listed in order of priority:

- Pickleball\*
- Walking/Hiking Trails
- Native Grasses and Wildflower
- Pedestrian Bridge across Lake
- Playground Expansion
- Picnic Shelters
- Equestrian Trailhead & Trails
- RV Campground
- Primitive Camping
- Pave Park Road

\*Participants wrote in these activities



Pickleball received the highest number of priority votes followed by walking/hiking trails.

Generally, the attendees were supportive of the park and expressed a strong desire for developing pickleball courts in Yadkin County.

The community workshop was advertised on Yadkin County's website, Facebook page, through press releases, flyers, and newspapers.

### Park & Recreation Survey - Conducted July/August 2024

A random stratified survey was completed as part of the public engagement for the Yadkin County Memorial Park Master Plan. This survey was conducted in July/August 2024. ETC Institute mailed a

survey packet to randomly selected households in Yadkin County. Each survey packet contained a cover letter, a copy of the survey, and a postage-paid return envelope. Residents who received the survey were given the option of returning the survey by mail or completing it online at [yadkincountysurvey.org](http://yadkincountysurvey.org).

After the surveys were mailed, ETC Institute followed up with residents to encourage participation. To prevent people who were not residents of Yadkin County from participating, everyone who completed the survey online was required to enter their home address prior to submitting the survey. ETC Institute then matched the addresses that were entered online with the addresses that were originally selected for the random sample. If the address from a survey completed online did not match one of the addresses selected for the sample, the online survey was not included in the final database for this report.

### Survey Finding for July/August 2024

Here is how the public responded to Yadkin Memorial Park.

Developments to Yadkin Memorial Park when asked to select which developments they feel would improve Yadkin Memorial Park, the top three selections by residents were to develop walking/hiking trails (57%), develop a pedestrian bridge across lake (40%), and playground expansion (40%). Residents were asked to select three developments that they think are most important for Yadkin Memorial Park and the top three were the same as above: developing walking/hiking trails, playground expansion and developing a pedestrian bridge across lake.

The section below and following to page 25 is included as information. This information provides a summary of the public involvement for the original park master plan.

### County-wide Information Gathering Workshop - Conducted August 2011

Yadkin County staff and community planners from the North Carolina Department of Commerce hosted a series of four back-to-back public workshops throughout the County to provide recreation information

and gather input from the public regarding their opinions, experiences, and recreation needs. The workshops were held in four geographically diverse areas throughout the County (Yadkinville, East Bend, Jonesville, Hamptonville) spanning August 22-25, 2011. The workshops were held in facilities that were contiguous to recreation sites.

The meetings were publicized through television (WXII; News 14 Carolina) and newspaper (Winston-Salem Journal; Yadkin Ripple) media coverage. In addition, e-mail blasts were sent to local officials throughout Yadkin County and regional tourism and heritage representatives (Yadkin Valley Heritage Corridor). Finally, the workshops were promoted and announced during the "community calendar" portion of Yadkin County Board of Commissioner meetings.

The four public workshops were designed and structured to be identical in nature so that the public attending a meeting in one area of the county would be presented with the same environment, information, and opportunities as the public in another area of the county on the previous night. The facilitators posed the same questions and same surveys at each meeting. In doing this, a controlled environment was created diminishing the potential for varying responses due to the facilitation of the meetings.

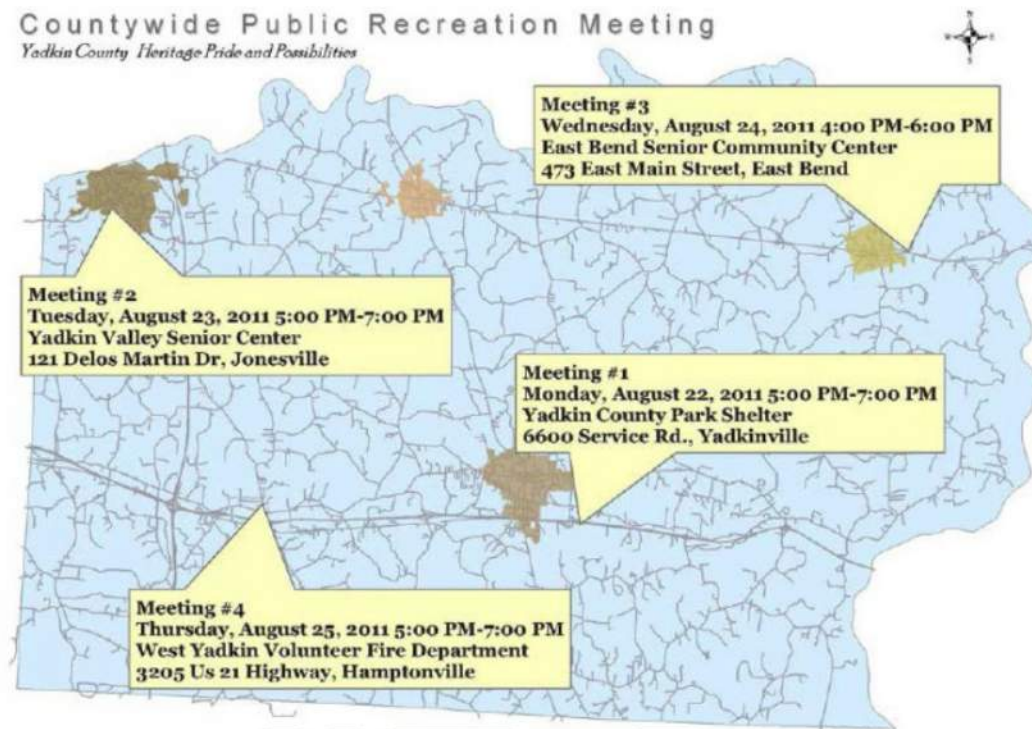
Each meeting was scheduled for approximately two hours; however, people could arrive and leave the meetings as their schedules would allow, while still having the opportunity to fully participate. This was accomplished because the workshops were set up as "floating meetings" in which the public could move individually through "information stations" at their own pace.

The first station was a sign-in station where the public checked in and gave their name, address, and other contact information which was entered into an electronic spreadsheet. At the second station,

the public was given an overview of the workshop structure and was also given information about recreation planning and the planning process. At the third station, the public was shown pictures of every recreation site operated by the County and their locations on large maps. At the fourth station, the public was given information on diverse types of recreation and the differences between passive and active recreation.

Photos and descriptions of recreation types were illustrated on large maps

for the public to see. After the information stations, the public would then move to another side of the room where they would engage in discussion with two facilitators who recorded public comments on large flipcharts that were secured to the wall and available for public





review. The discussions focused on what the public thinks Yadkin County is doing wrong and right, and what the County should be doing in terms of recreation. Finally, the public was given a two-sided recreation survey to fill out and drop in the survey collection box before exiting the meetings.

The following report collects and analyzes the information gathered from the public meetings as it relates to the 5D Reservoir park site.

### Survey Summary of Findings for Lake Hampton (formerly 5D Reservoir) - August 2011

Based on responses from those participating in the public meetings, the citizens of Yadkin County use their parks on a regular basis. Ten percent of the people attending the public meetings said they use the county parks on a daily basis. Forty-two percent stated they use county parks weekly, and 76% stated they use county parks monthly.

By far the most used park in the county is Yadkin County Park. The next most heavily used park is the Richmond Hill Law School site. Styers Mill and Donnaha Park were the next most used county facilities.

The majority (54%) of respondents said they are interested in both active and passive recreation. A fourth (25%) of the respondents said they preferred active recreation, while a fifth (20%) said they preferred passive recreation.

Overall, the citizens of Yadkin County believe the county's parks are in poor condition. Most respondents (+ 58%) said they felt the county's existing parks were below average. Approximately one third (35%) felt the county's parks were average. Only 8% of the respondents felt the county's parks were above average. No one indicated they felt the existing parks were in excellent condition. Those citizens providing input believe the County should be more active in providing parks and programs.

Ninety-five percent of the respondents said the County should take

a more active role. Only five percent said the county should maintain the same level, and no one suggested the County should not provide parks and recreation programs.

When asked to identify their favorite recreational activity provided at a county recreational site, the most popular activity listed was walking trails. Approximately one third of the participants listed this activity. Soccer was the second most popular activity, with 16% of respondents listing this as their favorite activity. The third most popular activity, fishing, and boating was submitted as a write-in activity. Almost 10% of those responding identified this activity as their favorite. Several activities (baseball/softball, swimming, horseback riding, and disc golf) received 6-8% of the responses. Camping, hunting, picnicking, and playgrounds received 1 or 2% of the votes.

From the public meetings, County staff learned the following:

- There is a demand for better parks.
- There is a demand for both active and passive recreation facilities.
- Walking and trails are the most popular outdoor recreation activities.
- Soccer is the most popular active recreation/team sport activity.
- There is demand for water based/nature-based recreation activities (camping, boating, fishing, hunting).

For more detailed results from the public meetings and surveys, see the Appendix.

### Public Workshop to Discuss the Park Master Plan 5D Reservoir (Yadkin Memorial Park) Master Plan Meeting Minutes

Tuesday, November 8, 2011

6:00 pm

A public workshop was held in the County Commissioners Board Room to review and discuss the site-specific plans for both renovations to Yadkin County Park and the Recreation Area at 5-D Reservoir. Approximately 35 people attended the workshop.

Kevin Austin, Chairman of the Board of County Commissioners opened the meeting by thanking those present for their attendance. He briefly spoke of the importance of the planning effort and the County's desire to make park improvements. Aaron Church, the County Manager, followed by explaining the overall planning process and provided information on current improvements the County is making at both the County park and land adjacent to the 5-D Reservoir.

Derek Williams from Benesch (formerly Site Solutions) discussed the comprehensive master plan process and went over the input that was received from the initial public workshops held in August. Pete Wall from Benesch (formerly Site Solutions) led the group through the findings from the site analysis of the park site and then walked everyone through the proposed design (see Appendix for additional information). Following his presentation, the floor was opened for comments and questions. Derek wrote a list of all comments on an easel for everyone's review.

Overall, everyone expressed support for the park. There was 20–30-minute discussion about the master plan. Many comments were made regarding individual preferences and concerns, but all comments were made in a positive "Let's improve the plan" manner. There were no negative responses to the project, or the design presented.

Refer to the Appendix for the original park master plan. Comments included:

#### Yadkin Memorial Park 5-D Site

Schedule – How soon will it be built?

- Several comments regarding the multi-use of trails. People are incredibly supportive of trail development and hope the County can develop trails that can be used by walkers, joggers, horse lovers, and bicyclists.
- Several comments about looking for the history and important natural/scenic features of the site and incorporating them into the plan.
- Someone asked about the revenue generating potential of recreational activities. It was noted that park operations will be studied in greater detail in the future but will be considered.
- Consider adding potable water toilets in the tent camping area.

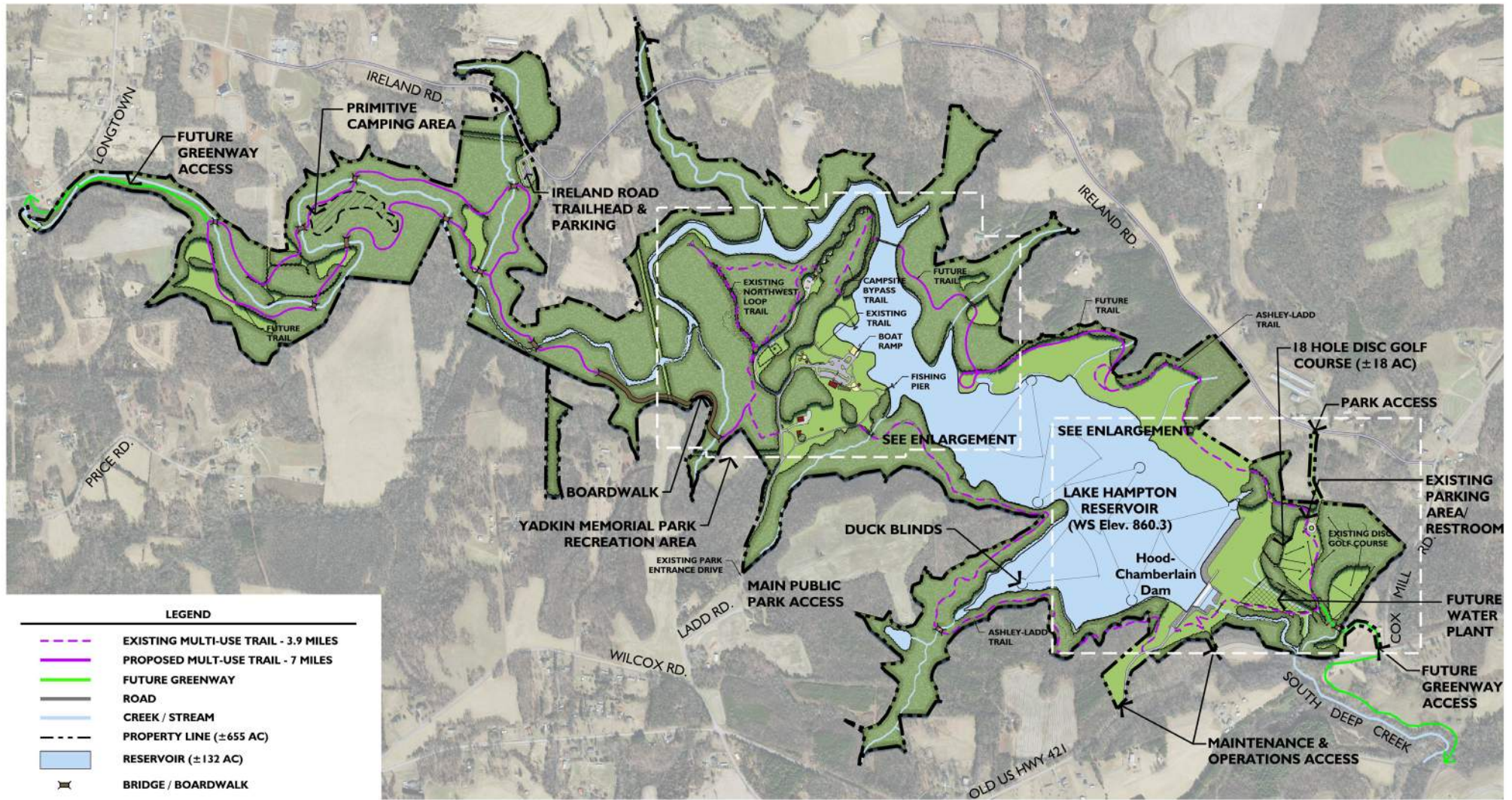
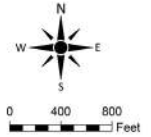
The meeting was closed by thanking those in attendance and reminding them that the planning process would be finalized in December.



# YADKIN MEMORIAL PARK | MASTER PLAN

YADKIN COUNTY, NC

YADKIN COUNTY PARKS &amp; RECREATION | 06.05.2025



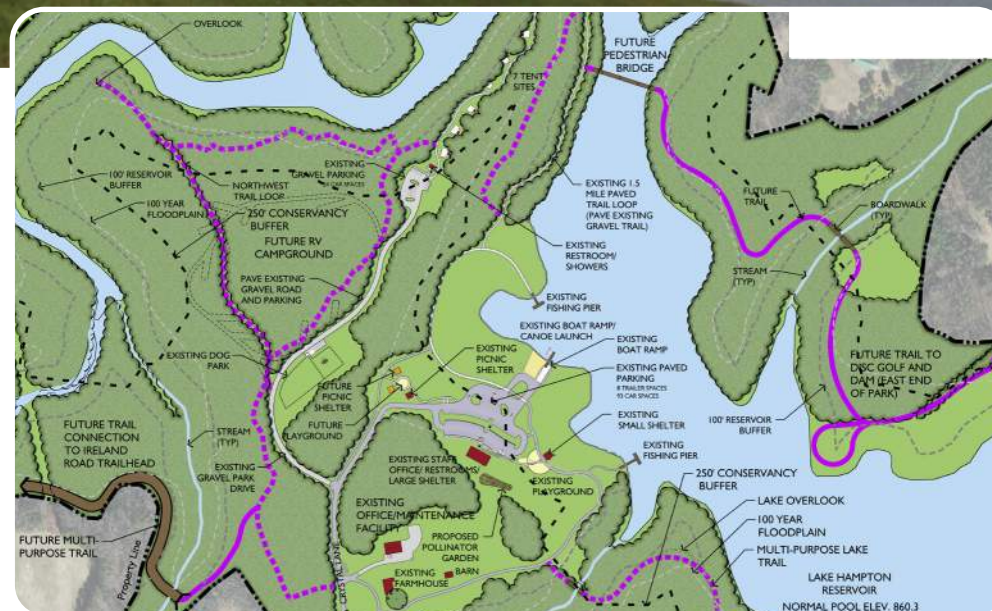




## PROGRAM DESCRIPTION

### Park Development History and Recommended Improvements

Yadkin Memorial Park opened to the public in 2014 after the first phase of park development was completed using the initial park master plan as guide for park development. Phase One development included the Lake Access Area, maintenance facility, trails, fishing docks, and park infrastructure. Phase Two improvements consisted of the primitive camping area, bathhouse, and improvements for the east end of the park. Construction work was completed in October 2020. While the existing facilities are serving the public well, there are several improvements that would expand recreation opportunities and enhance the park's existing facilities. The proposed updated master plan proposes the following improvements based on staff and public input:



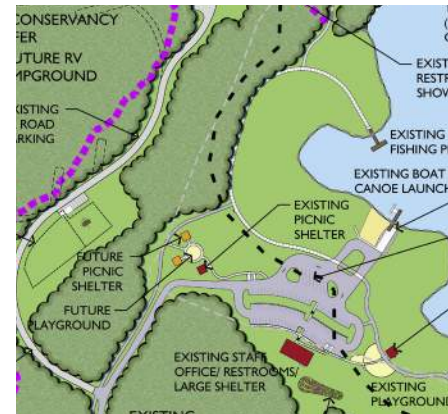


## Existing Farmstead/Nature Center/Outdoor Classroom

Upon entering the main entrance to the park from Ladd Road, visitors will first see the existing farmstead. The charming and traditional two-story story farmhouse provides a welcoming site to park visitors. During the initial phase of park development, the county has only made minor repairs to the building. Due to the age and condition of the existing structure, it has been determined that updating the building for public use would be cost prohibitive. As such, it is recommended that the building be demolished and replaced with a new nature center. The new facility could be constructed in the same location or potentially relocated to the point overlooking the lake to take advantage of the scenic views and enhance visitor experience.

Building a new nature center would be a valuable addition to the park, providing a dedicated facility for nature and environmental education, as well as a rentable public meeting space for community events and programming.

Exhibits can be developed for the nature center through local volunteers such as hunting and fishing clubs, high school science clubs, and local taxidermy businesses. As part of the original farmstead, there is a passive lawn space northeast of the house. This lawn area is protected with large trees and farm buildings. It provides an excellent setting for an outdoor gathering or classroom area. The final design will determine how this space is built out, but provisions for seating and a small stage and/or podium should be provided. This area would be an excellent site for day camp educational activities, environmental



lectures, and other teaching opportunities. The farmstead/nature center could also serve as a welcome center and provide general park information for visitors.

## Main Lake Access Area

Leaving the farmstead site, visitors will follow the entrance drive to a centralized parking area with boat ramps as well as the park entrance. This existing lake access area

provides parking, picnicking, fishing, boating, and other lake-oriented recreational activities.

This lake access area offers scenic views across the lake, open space, and has three existing picnic shelters. The master plan proposes to develop a large playground with additional picnic shelters in the open grass field north of the park drive.

## Wildflowers and Native Grasses

Based on public input, planting wildflowers and native grasses was important. The master plan proposes to create a wildflower and native grass meadow on the hillside south of the park office/store.

## Trail Expansion

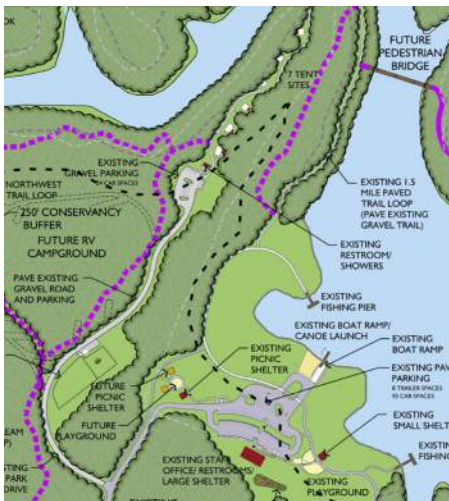
The park site is large enough to allow for the development of a significant internal trail system with county-wide and regional connectivity.

To date approximately 4.75 miles of trail has been developed in the park. While good progress has been made, the existing trail network is organized into individual trail segments and inner connectivity need to be improved. Recognizing the importance of a well-connected trail system the master plan proposes approximately 9 additional miles of trails including a lengthy pedestrian bridge across the lake on the west end of the park near the mouth of South Deep Creek. Building a pedestrian bridge across the lake will connect both sides of the lake creating a 5.5-mile loop around the lake. Creating a scenic walking trail of this distance will transform the park to a runner's paradise.

Lake Hampton has the potential to be a regional trail destination for cross-country running, biking, and bird watching.

### Pedestrian Bridges and Boardwalks

Pedestrian bridges will be used to cross the lake, creeks, and drainage features. The use of bridges will minimize impacts to the park's streams and waterways and help link destinations in the park. The county has already constructed a pedestrian bridge east of the dam. As mentioned in the trail expansion section, one potential site for a significant bridge feature is just north of the main lake access area on the western end of the park. Construction of this new pedestrian bridge will allow a looped trail system around most of the lake without having to construct trails on the steep (and rocky) slopes found in some areas adjacent to the lake. A feasibility study should be prepared to determine the location, length, and cost of constructing the bridge.



### Camping

An RV campground is planned for the area west of the existing primitive camping parking area. The size and location of the Yadkin Memorial Park is ideally suited for both RV and tent camping opportunities. The park is easily accessible from US Highway 421 and is remote enough to provide the privacy and outdoor recreational experience sought by campground users. The future RV campground will provide camp sites with electric and water

hookups. A restroom/shower building is already located near the RV campground area. The specific number and location of campsites are to be evaluated during later stages of design and construction.

### Deep Creek Greenway

An important aspect of the park is its strategic location on South Deep Creek and its central location in the county. Although there is

not a current Greenway Master Plan, based on public participation comments, there is an ardent desire among county residents to have access to walking/nature trails. This connection to the South Deep Creek provides an opportunity for trails associated with park to be connected to the existing trails at Yadkin County Park further downstream. Potential regional trail connections include the Yadkin River State Trail and Boone Heritage Trail, Carolina Thread Trail, Jonesville Greenway Trail, and Iron Bluff Mountain Trail.

### Memorial Park East (Ireland Road): Park Expansion

Input from those attending the public workshop indicated extraordinarily strong demand for the development of pickleball courts. Even though Memorial Park is a sizable property, finding an area with suitable terrain outside the conservation area around the lake will be quite challenging. Given site constraints we recommend the County considering acquiring additional land, at Yadkin County Park, to develop pickleball courts. The east end of the park has convenient parking, restrooms, and an access road with undeveloped land that could potentially be utilized for a new pickleball facility.

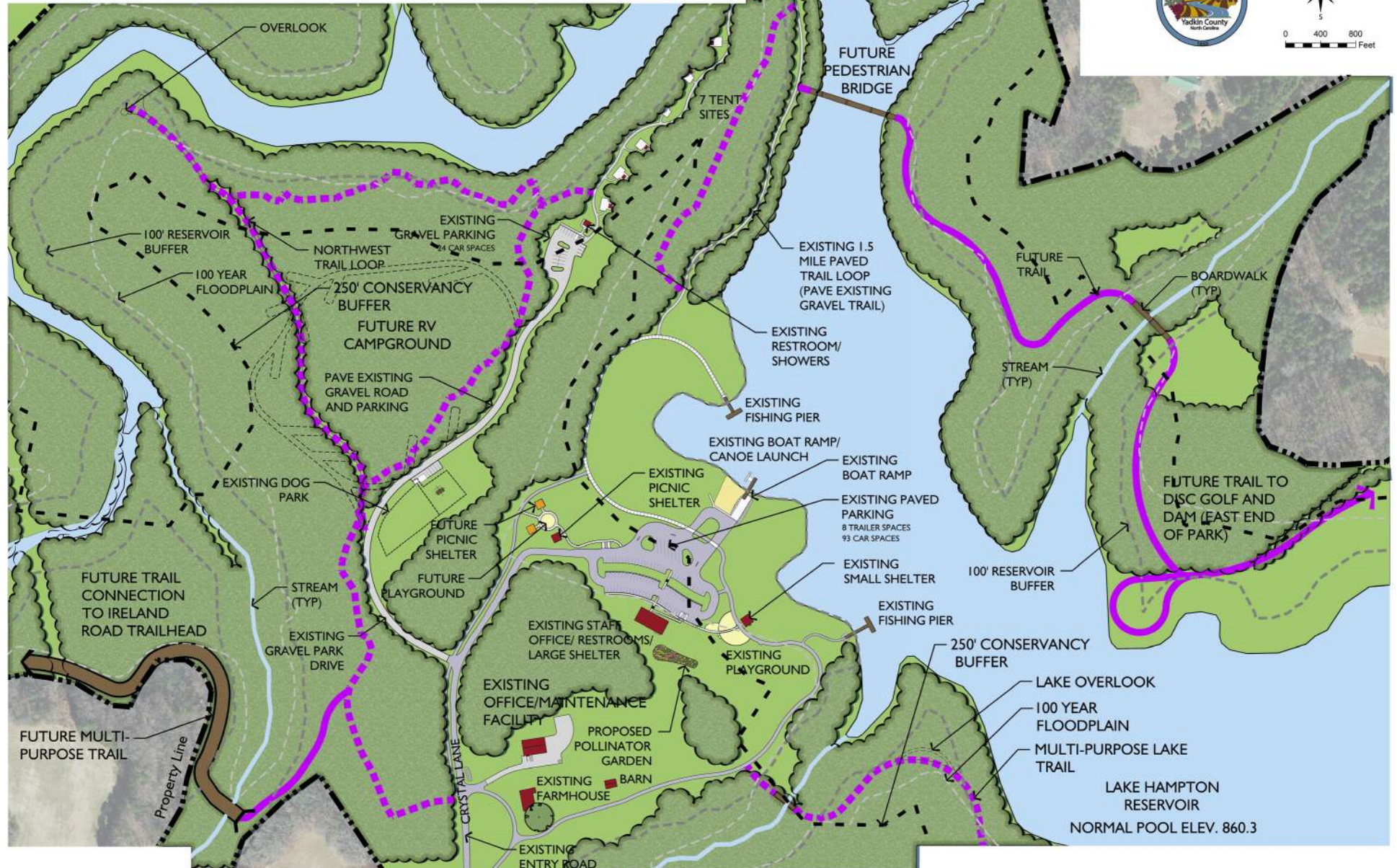
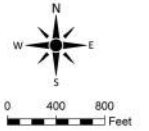
### Park Infrastructure

Park Infrastructure is an important aspect of having a successful park. Having paved park roads and trails gives the park more curb appeal, reduces maintenance costs, and will prevent erosion of sediment into the lake. With this understanding the master plan proposes to pave all park roads and the shoreline trails around the lake that will flood.

### Storage Facility

To support the ongoing operations and programming at the park, a dedicated storage facility is needed to house essential equipment, tools, and materials. Currently, there is limited secure space available for storing items. A new storage facility would improve operational efficiency, reduce wear and tear on equipment, and enhance staff safety by providing organized and accessible storage. Additionally, it would help preserve the aesthetic quality of the park by minimizing visual clutter and ensuring that equipment is properly housed out of public view. The County has identified a potential location for a new storage facility east of the existing maintenance facility.



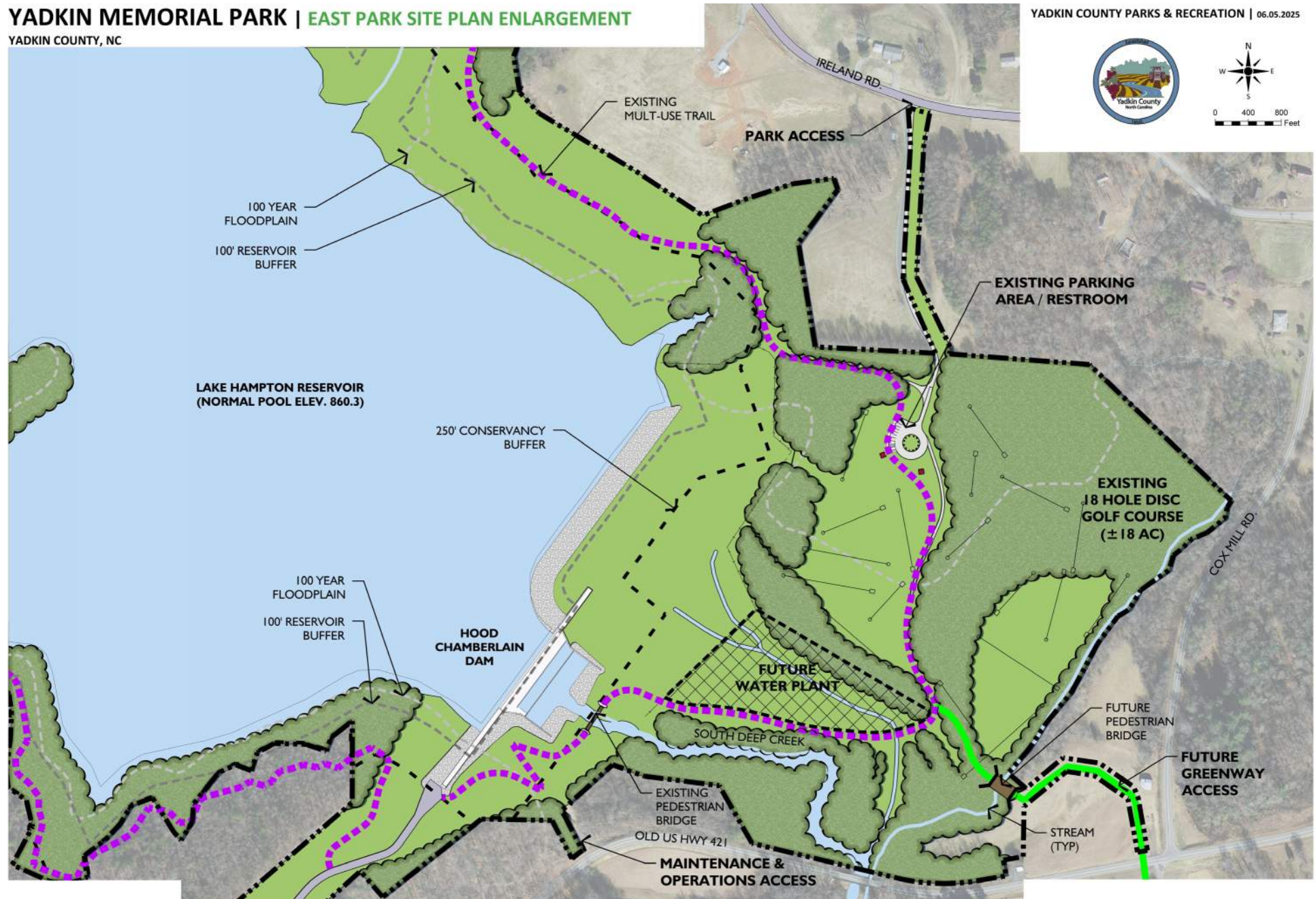
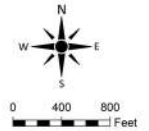




# YADKIN MEMORIAL PARK | EAST PARK SITE PLAN ENLARGEMENT

YADKIN COUNTY, NC

YADKIN COUNTY PARKS & RECREATION | 06.05.2025







## MAINTENANCE/OPERATIONS

Lake and park activities are controlled by an on-site park manager that operates from a small park office located at the lake main park access area. The park manager sells fishing permits and supplies and manages boat rentals. In addition, the park manager monitors lake use and park activities. Lake activities are limited to daylight hours, although special events and group shelter rentals may extend operation hours into some evenings. Gates at all park entrances prohibit use of the park after hours. Trails and fishing piers are not lit for evening use.

Lake facilities will be operated and maintained by County forces. As identified in the County's Parks and Recreation Comprehensive Master Plan, the development and operations of this facility will be managed by the Soil and Water Conservation Director, working directly with

the County Manager. In the future, the County's Parks and Recreation Department will provide programming responsibilities.

As noted previously, while park improvements will expand and enhance lake use, there will still be restrictions on lake use. No swimming or wading will be allowed, and boating will be restricted to non-motorized boats. Sailboats will not be allowed on the lake.

Finally, while walking and jogging along the lake will be encouraged, dogs will be required to be on leash and prohibited from entering the lake (except for hunting dogs, see guidelines) to minimize waste pollutants in the lake.

See Regulations Governing In-Lake Activities and Uses of 5D Reservoir for specific operations information.

### Environmentally Sensitive Construction/Park Operation

As a passive park, 5D reservoir provides an important environmental asset to the community by preserving open space and minimizing land disturbance. The preservation of existing trees and vegetation improves air quality and water quality. The preservation of existing wetlands and the protection of buffers along creeks and streams reduce storm water runoff. These wetlands serve as a filtration system for water leaving the surrounding off-site residential and agricultural development.

As a public entity, Yadkin County recognizes its role in environmental protection and plans to develop the facilities at 5D Reservoir with minimal environmental impact. While the details for minimizing the environmental impact of park construction and operations will be worked out in subsequent design phases, some of the concepts that will be utilized will include:

- Comply with Class 1 Reservoir requirements for public access as outlined by NC Division of Water Quality
- Comply with requirements of the Army Corps of Engineers
- Site planning to minimize grading and the removal of existing vegetation.
- Balance earth movement to minimize haul off/haul on transportation costs/fuel.
- Maintain required buffers to protect water quality.
- Use local building materials.
- Utilize energy efficient lighting.
- Select plumbing fixtures that reduce and/or eliminate water use.
- Utilize clear story/skylights to maximize the use of natural light.

### Lake Hampton 5D Reservoir Guidelines

#### Yadkin County

Regulations Governing In-Lake Activities and Uses of Deep Creek Reservoir

#### I. Purpose

The purpose of this regulation is to set forth for the Yadkin County the conditions to regulate activities and recreational use of Deep Creek Reservoir by the public and organized groups and to protect the water in these reservoirs as a high-quality drinking water supply.

#### II. Facility Operating Schedule

- A. Any person using any of the impoundment premises of Yadkin County during the hours in which the premises are officially open to the public is deemed to be a visitor to the premises subject to established regulations and applicable law and shall in no event be deemed an invitee.
- B. The recreation facilities will be open only during daylight hours.
- C. At the discretion of the Park Manager, the facilities may be closed for public use during inclement weather.

#### III. Fees and Rates for Use of the Facilities

- A. Rates and Fees for fishing, boating or other activities will be as established by the Yadkin County Commissioners and shall be posted in the Park Manager's office at the recreational facility.
- B. The Park Manager will supervise the collection of fees.

#### IV. Enforcement of Regulations

- A. A copy of these regulations shall be posted in the Park Manager's office and shall be available for every person to read before using the premises.
- B. The Lake Staff shall be the official custodians in charge of the reservoirs and surrounding premises. The Lake Staff shall maintain and enforce all regulations and policies which have been adopted by the Yadkin County Commissioners.
- C. Appropriate State and local law enforcement authorities will be called upon for assistance as required.
- D. Permission for the use of the premises may be denied or voided for any person, group, or activity which is considered in any way threatening to the security and safety of any person or damaging to the facilities, equipment, or water quality.



- E. The Lake Warden is authorized on behalf of Yadkin County to direct people whose presence and/or use of the facilities are in violation of law or regulations to leave Yadkin County premises.

#### V. Activities and Uses

- A. Public boating shall be permitted only for fishing, sailing, and/or rowing. Boating shall be restricted as to locations designated by Yadkin County but in no case are within 50 yards of the water supply intake facilities.
- B. The total number of boats on the lake should not exceed one boat per ten acres of reservoir surface area.
- C. People may not enter or leave a boat at any place except from the dock or other designated location controlled by Yadkin County. Each user shall observe safety rules and boating courtesy.
- D. Fishing is allowed on the lake only in approved areas as follows:
  - a. From a boat.
  - b. Designated area on the docks.
  - c. Designated area on the fishing pier.
- E. Users shall confine activities to those areas which are designated for public use and shall in no instance enter other surrounding lands of the lakes.
- F. Swimming or any body contact with the water is strictly prohibited. Any user observed swimming, rolling a kayak, or in any other way, showing disregard for any of the stated regulations or otherwise contributing to degradation of water quality or abuse of these facilities may be restricted from using the lakes for a period as designated by the Park Manager.
- G. Picnicking will be permitted only in designated areas.
- H. Hunting of wildlife will be limited to waterfowl and deer. Season schedule, regulations, and permitting of the North Carolina Wildlife Commission shall apply for hunting, fishing, and boating.
- I. Acts of degradation to water quality or desecration of trees or plant life will not be tolerated.
- J. Use of alcohol or drugs on Yadkin County premises is prohibited.
- K. Discourteous or abusive language or acts of violence or intimidation are not acceptable.
- L. No horses, cattle, or domestic animals are permitted to water, wash, or wallow in the reservoir.

- M. Domestic animals are permitted to be within 50 feet of the normal pool elevation only along M. designated trails or in designated recreation areas. Domestic animal owners are responsible for the removal and appropriate disposal of feces.
- N. Horseback riding, biking, and hiking are permitted along designated trails and staging areas only.
- O. Disc-golf areas are to be located sufficiently at a distance from the reservoir so that at no time will players and/or their discs encounter the water.
- P. Camping is permitted in designated areas only. All trash and debris shall be placed into trash receptacles located at the designated camping area.
- Q. Campers will not be allowed to remove drinking water from the reservoir. Potable drinking water will be provided and signed as such.

#### VI. Watercraft Standards

- A. Private boats, canoes, or kayaks will be available for use on the reservoir after inspection to determine if they are free of aquatic weeds. In addition, Yadkin County owned craft will be allowed and must be launched from docking facilities provided by Yadkin County. All applicable fees must be paid prior to recreational use of any boat on the water supply reservoir.
- B. Private gasoline motors shall not be allowed for use on the reservoirs except as provided for under Section VI. Electric trolling motors are also allowed provided the motor is inspected by the Lake Staff prior to its use on the lake. Batteries must be housed in battery boxes tightly secured to the boat.
- C. Watercraft should be constructed to United States Coast Guard standards and comply with the following length restrictions:
  - a. Jon-boats and sailboats – not to exceed 14 feet in length.
  - b. Canoes and kayaks – not to exceed 17 feet in length.
- D. Rental boats are to be returned in clean condition. All trash and debris shall be placed into trash receptacles located at the boat dock.
- E. People with special needs because of physical handicaps may be allowed to use privately owned boats not exceeding 14 feet in length and 4 stroke gasoline powered motors not to exceed 9.9 horsepower at the reservoir upon approval of an application for an exemption

to these regulations. Such application must include medical documentation of the handicap and be submitted to the P for approval. If the Park Manager approves the special privilege, it will be for a period of twelve months. Renewals will require the submittal of current medical documentation that the applicant continues to have special needs based on a physical handicap. All boats and motors must be inspected by the Lake Staff prior to use on the lake.

## VII. Hunting Regulations

- A. All valid laws of the State of North Carolina, the United States Government and the North Carolina Wildlife Commission relating to hunting shall always be in effect on the Deep Creek Reservoir property.
- B. No hunting shall be permitted on Deep Creek Reservoir except migratory waterfowl and deer in season, and all such hunting shall be subject to all laws of the State of North Carolina and the United States Government relating thereto. No hunting of waterfowl may be done from the shoreline of the Deep Creek Reservoir. All waterfowl hunting must be done from the waters in a blind on the Deep Creek Reservoir.
- C. No pistol or rifle shall be shot, fired, or discharged in, on, along or across the Deep Creek Reservoir, except by duly constituted peace officers, at the local state or federal level.
- D. Hunting waterfowl is permitted only with a shotgun which is no larger than 12 gauge. Buckshot, slugs and shot larger than No.2 shall not be used.
- E. Hunting deer is permitted only with the use of a bow. Equipment regulations to be determined by the North Carolina Wildlife Commission.
- F. No duck blind shall be constructed or used on the Deep Creek Reservoir except after a written permit for such construction or use has been obtained from the County. Application for a permit to construct or use a duck blind must be accompanied with plans showing the type of construction and proposed location. The County must approve both the type of construction and proposed location. No duck blinds shall be located closer to the shoreline of the Deep Creek Reservoir at normal water level of Elevation than eight hundred (800') feet and shall not be constructed or used within eight hundred (800') feet of any other duck blind. Where a floating duck blind is approved,

it may not be placed upon the waters of the Deep Creek Reservoir until ten (10) days before the official opening of the duck season and must be removed from the waters of the Deep Creek Reservoir not later than ten (10) days after the close of the duck season.

## VIII. User Safety

- A. To ensure safety, each person using the lake must sign their name in the Lake Wardens register. The user responsible for small children shall be required to list the names for each child after his or her name on the register.
- B. Not more than 4 adults, and fewer depending upon the weight rating of the boats, may occupy a boat at any time. Each boat must have an appropriate water safety device for each person in the boats.
- C. People under 16 years of age shall be permitted on the lake by the permission of an adult who will assume full responsibility. These individuals are required to wear U.S. Coast Guard approved flotation devices.
- D. The County Commissioners and/or their designee are authorized to deny, suspend, or restrict the use of the Deep Creek Reservoir premises or parts thereof to people or groups who fail to comply with applicable laws, or any regulations adopted hereunder including those for personal safety.

## VIII. Sanitation

- A. Adequate sanitary sewage facilities are available at the recreational areas.
- B. Sufficient containers are provided by Yadkin County at convenient location for deposit of refuse and garbage. In no instance shall trash or refuse of any kind be thrown into the water.
- C. No person shall do any act to impair or degrade the water of the reservoir.

## IX. Effective Date

These regulations shall be effective on and after \_\_\_\_\_.

## X. Policy Reference

Policy On In-lake Activities and Uses adopted \_\_\_\_\_.





## PROJECT COSTS

OPCC Budget Estimate  
Based on the Master Plan dated 4/23/25  
April 23, 2025

The development of recreation facilities on a 138 - acre lake with almost 500 acres of adjacent property offers wonderful opportunities for recreation, nature enjoyment, and environmental education. Those opportunities come with a cost. As part of the master plan process, an order of magnitude cost estimates was developed for all recreation facilities. This is a summary of these costs.

A more detailed cost estimate is included in the appendix of this document, beginning on page 35.

PARK IMPROVEMENT	COST
RV Campground	\$1,565,296.00
Pedestrian Bridge	\$1,320,500.00
Trail Development	\$20,175,864.00
Playground	\$513,540.00
Picnic Shelters (2)	\$150,840.00
Native Grasses and Wildflowers	\$37,650.00
Nature Center and Storage Building	\$2,402,500.00
Dock Replacement	\$726,200.00
Pave Campground Road and Parking	\$172,895.00
Contingency (±10%)	\$2,706,529.00
Probable Sub-Contractor Budget	\$29,771,814.00
Contractor Overhead, Profit, and General Conditions (20%)	\$5,954,362.80
Probable Total Construction Budget (With Contingency)	\$35,726,176.80
Soft Cost	
Design, Permitting and Plan Review Fees, Survey, Geotechnical (12%)	\$4,287,141.22
Total Budget including soft cost	\$4,287,141.22
Grand Total Budget Estimate	\$40,013,318.02



## PHASING

With a construction cost of \$40.0 million, it is likely the County will phase construction of the improvements to Yadkin Memorial Park. Detailed phasing plans can be developed as Yadkin County establishes definitive project schedule, budgets, and sets priorities for recommended improvements.





## COST APPENDIX

RV CAMPGROUND					
Clearing/Grading/Erosion Control					
Item No.	Item	Unit	Estimated Quantity	Unit Price	Sub-Total
1	Clearing & Grubbing Wooded Area	acre	5.0	\$10,000.00	\$50,000.00
2	Construction Layout and Mobilization	acre	5.0	\$5,000.00	\$25,000.00
3	Temporary Silt Fence	lf	5,700	\$6.00	\$34,200.00
4	Construction Entrance	ea	1	\$3,500.00	\$3,500.00
5	Stone Check Dams	ea	19	\$250.00	\$4,750.00
6	Temporary Diversion Ditch	lf	5,700	\$7.00	\$39,900.00
7	Grading With On-Site Material	cy	33,600	\$10.00	\$336,000.00
8	Strip Topsoil, 6"	cy	4,050	\$14.00	\$56,700.00
9	Fine Grade Roads/ Parking	sy	7,850	\$7.00	\$54,950.00
10	Swale Protective Liner	sy	3,800	\$4.00	\$15,200.00
11	Temporary Sediment Basin	ea	1	\$25,000.00	\$25,000.00
12	Grassing, fertilizer, mulch	acre	2	\$4,000.00	\$8,000.00
13	Slope Stabilization	sy	3,010	\$4.00	\$12,040.00
Clearing/Grading/Erosion Control Budget					\$665,240.00

RV CAMPGROUND					
Storm Drainage					
Item No.	Item	Unit	Estimated Quantity	Unit Price	Sub-Total
1	Catch Basin/ Yard Inlet	ea	3	\$6,000.00	\$18,000.00
2	15" RCP	lf	100	\$98.00	\$9,800.00
3	15" RCP Flared End Section	ea	1	\$1,900.00	\$1,900.00
4	18" RCP	lf	180	\$106.00	\$19,080.00
5	18" RCP Flared End Section	lf	12	\$2,100.00	\$25,200.00
6	Temporary Inlet Protection	ea	3	\$400.00	\$1,200.00
7	Riprap	ton	70	\$85.00	\$5,950.00
Storm Drainage Budget					\$81,130.00

RV CAMPGROUND					
RV Camp Sites (14)					
Item No.	Item	Unit	Estimated Quantity	Unit Price	Sub-Total
1	ABC stone, 4" depth (under concrete pad)	ton	420	\$58.00	\$24,360.00
2	Heavy Duty Asphalt, 3" depth (Campground Road)	ton	560	\$165.00	\$92,400.00
3	ABC stone, 8" depth (Campground Road)	ton	1,352	\$58.00	\$78,416.00
4	Concrete Pad, 5" depth	sy	2,100	\$90.00	\$189,000.00
5	Fire Ring	ea	14	\$625.00	\$8,750.00
6	Lantern Holder	ea	14	\$400.00	\$5,600.00
7	Identification Signage	ea	14	\$500.00	\$7,000.00
8	Picnic Table	ea	14	\$2,700.00	\$37,800.00
9	Trash Can	ea	14	\$2,200.00	\$30,800.00
10	Grill	ea	14	\$600.00	\$8,400.00
RV Campsite Budget					\$482,526.00

RV CAMPGROUND					
Utilities					
Item No.	Item	Unit	Estimated Quantity	Unit Price	Sub-Total
1	Domestic water line, 2" PVC	lf	2,700	\$23.00	\$62,100.00
2	Sanitary Sewer lines, 4" PVC	lf	3,100	\$53.00	\$164,300.00
3	Sanitary Sewer Hook-ups	ea	14	\$500.00	\$7,000.00
4	Water and Power Hook-ups	ea	14	\$500.00	\$7,000.00
5	Manhole	ea	8	\$2,500.00	\$20,000.00
6	Valves and Fittings	ls	1	\$12,000.00	\$12,000.00
7	UG Electrical	lf	3,200	\$20.00	\$64,000.00
Probable Utility Budget					\$336,400.00
RV Campground Total					\$1,565,296.00

PEDESTRIAN BRIDGE					
Item No.	Item	Unit	Estimated Quantity	Unit Price	Sub-Total
1	Pre-engineered Ped Bridge	lf	255	\$4,000.00	\$1,020,000.00
2	Timber Piles	lf	1,000	\$100.00	\$100,000.00
3	Construction Layout/Mobilize	ls	1	\$35,000.00	\$35,000.00
4	Concrete Abutment/End Bents	ls	1	\$100,000.00	\$100,000.00
5	Abutment Excavation	ls	1	\$20,000.00	\$20,000.00
6	Bollards (2)/Guardrail (200 LF)	ls	1	\$22,000.00	\$22,000.00
7	Erosion Cont./Riprap (100 TN)	ls	1	\$15,085.00	\$23,500.00
Probable Bridge Budget					\$1,320,500.00

TRAIL DEVELOPMENT					
Pave Lakeside Trail-Over Existing Gravel Trail Connecting Primitive Campground					
Item No.	Item	Unit	Estimated Quantity	Unit Price	Sub-Total
1	Light Duty Asphalt-(2" depth), 2,225'L x 8' w	ton	218	\$165.00	\$35,970.00
2	CABC (4" depth)	ton	326	\$58.00	\$18,908.00
3	Construction Layout and Mobilization	ac	1	\$4,000.00	\$4,000.00
4	Fine Grade Roads/ Parking	sy	1,978	\$7.00	\$13,846.00
Probable Trail Budget					\$72,724.00

TRAIL DEVELOPMENT					
New Lakeside Trail-Eastern Shoreline: Connects Pedestrian Bridge to East End of Park					
Item No.	Item	Unit	Estimated Quantity	Unit Price	Sub-Total
1	Asphalt Trail, 8,620 'L x 8' w	lf	8,620	\$285.00	\$2,456,700.00
2	Boardwalk, timber	lf	144	\$3,500.00	\$504,000.00
Probable Trail Budget					\$2,960,700.00



TRAIL DEVELOPMENT					
Pave South End Trail-Over Existing Gravel from Restroom to Dam					
Item No.	Item	Unit	Estimated Quantity	Unit Price	Sub-Total
1	Light Duty Asphalt-(2" depth), 2,671' L x 8' w	ton	262	\$165.00	\$43,230.00
2	CABC (4" depth)	ton	475	\$58.00	\$27,550.00
3	Construction Layout and Mobilization	ac	1	\$4,000.00	\$4,000.00
4	Fine Grade Roads/ Parking	sy	2,375	\$7.00	\$16,625.00
Probable Trail Budget					\$91,405.00

TRAIL DEVELOPMENT					
New Lakeview Trail-Western Shoreline: Connects Dam to Farmstead Trail					
Item No.	Item	Unit	Estimated Quantity	Unit Price	Sub-Total
1	Asphalt Trail, 8,326' L x 8' w	lf	8,326	\$285.00	\$2,372,910.00
Probable Trail Budget					\$2,372,910.00

TRAIL DEVELOPMENT					
New West End Primitive Camping Loop Trail					
Item No.	Item	Unit	Estimated Quantity	Unit Price	Sub-Total
1	Asphalt Trail, 4,256' L x 8' w	lf	9,349	\$285.00	\$2,664,465.00
2	Pedestrian Bridge#1,#2, #3,#4 #5,#6,#7,#8	lf	512	\$3,000.00	\$1,536,000.00
3	Timber Piles	lf	6,400	\$100.00	\$640,000.00
4	Construction Layout and Mobilization	ls	1	\$25,000.00	\$25,000.00
5	Concrete Abutments	pair	8	\$30,000.00	\$240,000.00
6	Abutment Excavation	ls	8	\$15,000.00	\$120,000.00
7	Bollards	ea	16	\$1,000.00	\$16,000.00
8	Guardrail	lf	300	\$100.00	\$30,000.00
9	Erosion Control	ls	1	\$6,000.00	\$6,000.00
10	Riprap	ton	1440	\$85.00	\$122,400.00
Probable Trail Budget					\$5,399,865.00

TRAIL DEVELOPMENT					
Ireland Road Trailhead and Trail Connector: Starts at Dog Park and Ends at Trailhead					
Item No.	Item	Unit	Estimated Quantity	Unit Price	Sub-Total
1	Asphalt Trail, 4,256' L x 8' w	lf	4,256	\$285.00	\$1,212,960.00
2	Boardwalk, timber	lf	1,866	\$3,500.00	\$6,531,000.00
3	Pedestrian Bridge#1,#2, and #3	lf	256	\$3,000.00	\$768,000.00
4	Timber Piles	lf	2,400	\$100.00	\$240,000.00
5	Construction Layout and Mobilization	ls	1	\$25,000.00	\$25,000.00
6	Concrete Abutments	pair	3	\$30,000.00	\$90,000.00
7	Abutment Excavation	ls	3	\$15,000.00	\$45,000.00
8	Bollards	ea	6	\$1,000.00	\$6,000.00
9	Guardrail	lf	300	\$100.00	\$30,000.00
10	Erosion Control	ls	1	\$15,000.00	\$15,000.00
11	Riprap	ton	180	\$85.00	\$15,300.00
13	Trailhead parking lot-1 acre site	ls	1	\$300,000.00	\$300,000.00
13	Grassing	acre	8	\$1,980.00	\$15,840.00
Probable Trail Budget					\$9,278,260.00

Trail Development Total					\$1,565,296.00
-------------------------	--	--	--	--	----------------

PICNIC SHELTERS (2)					
Item No.	Item	Unit	Estimated Quantity	Unit Price	Sub-Total
1	Timber Frame Shelter with shingle roof, 24' x 24'	ea	2	\$50,000.00	\$100,000.00
2	Concrete slab, 6"	sy	114	\$60.00	\$6,840.00
3	Picnic Tables	ea	8	\$2,700.00	\$21,600.00
4	Trash Can	ea	2	\$2,200.00	\$4,400.00
5	Grill	ea	2	\$1,500.00	\$3,000.00
6	Lights and Power	ls	1	\$15,000.00	\$15,000.00
Probable Picnic Shelter Budget					\$150,840.00

PLAYGROUND					
Item No.	Item	Unit	Estimated Quantity	Unit Price	Sub-Total
1	Play Equipment Allowance, 5,000 SF	ls	1	\$300,000.00	\$300,000.00
2	Play Surfacing, engineered wood fiber	cy	200	\$55.00	\$11,000.00
3	Edging	lf	180	\$28.00	\$5,040.00
4	No.57 Stone, 2"	ton	60	\$60.00	\$3,600.00
5	Mirafi fabric	sy	5000	\$2.00	\$10,000.00
6	Underdrain	lf	180	\$15.00	\$2,700.00
7	Connecting Sidewalk, 4"	sy	270	\$60.00	\$16,200.00
8	Site Prep.	ls	1	\$15,000.00	\$15,000.00
9	Shade Structure	ls	1	\$150,000.00	\$150,000.00
Probable Playground Budget					\$513,540.00

PAVE CAMPGROUND ROAD AND PARKING					
Item No.	Item	Unit	Estimated Quantity	Unit Price	Sub-Total
1	Heavy Duty Asphalt, 3" depth (Park Road)	ton	735	\$165.00	\$121,275.00
2	ABC stone, 4" depth (Park Road)	ton	890	\$58.00	\$51,620.00
Roads Budget					\$172,895.00

NATIVE GRASSES AND WILDFLOWERS					
Item No.	Item	Unit	Estimated Quantity	Unit Price	Sub-Total
1	Native Grasses and Wildflower Seed	acre	0.25	\$8,000.00	\$2,000.00
2	Planting Soil, 3" depth	cy	100	\$175.00	\$17,500.00
3	Planting Bed Prep	sy	1210	\$15.00	\$18,150.00
Native Grasses Budget					\$37,650.00

NATURE CENTER					
Item No.	Item	Unit	Estimated Quantity	Unit Price	Sub-Total
1	Nature Center	sf	4450	\$450.00	\$2,002,500.00
2	Storage Building	sf	2000	\$200.00	\$400,000.00
Nature Center Budget					\$2,402,500.00

DOCK REPLACEMENT					
Item No.	Item	Unit	Estimated Quantity	Unit Price	Sub-Total
1	Replace Floating dock #1 (north of boat ramp)	sf	1000	\$200.00	\$200,000.00
2	Replace Floating dock #2 (south of boat ramp)	sf	1100	\$200.00	\$220,000.00
3	Replace Floating dock #3 (at boat ramp)	sf	720	\$200.00	\$144,000.00
4	Spud Piles	lf	72	\$100.00	\$7,200.00
5	Dock expansion-to be applied to dock #3	sf	640	\$200.00	\$128,000.00
6	New fish cleaning station for one dock	ls	1	\$3,000.00	\$3,000.00
7	Waterline to dock, 1"	lf	800	\$30.00	\$24,000.00
Dock Replacement Budget					\$726,200.00



## PREVIOUS PLANNING EFFORTS

Page 39 to 47 have been included in the master plan update as information from the original park master planning effort.

Four Pages for NC DWQ Section 1200 Regulations Document

## PUBLIC MEETINGS

### Attendance/Turnout

Public turnout was very encouraging with a total of 191 citizens attending the meetings. The breakout for each meeting is indicated as follows:

Date	Location	Time	Attendance
Monday, August 22	Yadkin County Park Shelter-6600 Service Road, Yadkinville, NC	5:00 pm – 7:00 pm	89
Tuesday, August 23	Yadkin Valley Senior Center-121 Delos Martin Drive, Jonesville, NC	5:00 pm – 7:00 pm	43
Wednesday, August 24	East Bend Senior Community Center-473 East Main Street, East Bend, NC	4:00 pm – 6:00 pm	31
Thursday, August 25	West Yadkin Volunteer Fire Department-3205 US Highway 21, Hamptonville, NC	5:00 pm – 7:00 pm	28

## FACILITATION RESULTS

Below are the responses to the questions that were asked at the four separate community meetings last week. The responses are intentionally not consolidated so that one can utilize the value in analyzing not only the responses that were given, but also where responses were made and due to changing the question(s) after the first meeting (see footnote).

### Yadkin County Public Recreation Meeting - August 22, 2011 Yadkin County Park

Question: What is the County doing right/wrong in terms of recreation?  
(\* indicates that answer was heard more than once)

1. All recreation sites/ programs run by volunteers-no County staff.

- Only recreation location for children is Yadkin County Park.
- Facilities are old and outdated, not safe.
- No access for handicapped people-safety issues.\*
- Only baseball and soccer fields need more variety in sports offered.
- Would like to see facilities for archery and firearm shooting.
- Need a facility with campsites.\*
- Would like to see Kayaks/Canoes furnished and rentable.
- Would like to see fishing offered (in managed pond, within watershed).\*
- Like the frisbee golf course.
- Soccer fields need repair and maintenance-would like County funding for this.\*
- More variety in picnic facilities.\*
- Would like a fishing pond for children.
- No security or maintenance at Shore-Styers Mills Park.
- Would like more soccer fields.
- Would like to have fishing and boating at the proposed 5-D Park.\*
- Not enough funding to implement any of these ideas.
- Would like to see facilities at river access points (picnic tables, etc.).
- Terrace lawn around the amphitheater in Yadkin County Park.
- Would like to see a County golf course serving high schools and bringing in revenue.
- Maintenance needed on baseball fields.
- No tennis courts or pool on north side of County.
- Would like paving of walking trail in Yadkin County Park.
- Signage needed at soccer fields (giving field #, etc.).
- Nature trail in Yadkin County Park is nice but must ensure it is maintained.
- General maintenance needed at Yadkin County Park restrooms, erosion problems, etc.
- Restrooms at Yadkin County Park need to be kept clean.\*
- Exposed roots in Nature Trail at Yadkin County Park-not safe for pedestrians.
- Make people aware of the trails in Yadkin County Park-currently underutilized by the public.
- Would like to see more nature trails in County parks.

31. Soap needs to be kept in stock at Yadkin County Park.
32. Like the playground, walking trail, soccer fields at Yadkin County Park.
33. Need lights at soccer fields (could get grant funding).\*
34. Access problems to soccer fields-hard to get downhill, especially elderly, and handicapped, RR ties placed downhill are rotted out and unsafe to step on.\*
35. Important to maintain what we have-would like to see line item in budget for this.
36. Would like to see facilities for shooting sports.\*
37. Need more soccer goals-currently kept chained so no access for kids wanting to practice.
38. Mowing is sporadic on soccer fields.
39. Need better access in and out of the parks, along with handicap access.
40. Trails currently offered are good.
41. Need mountain biking trails.
42. Need better signage at river access points.
43. Need irrigation on soccer fields.
44. County has sites made available through donation that they are not utilizing.
45. County could ask local businesses and citizens for help in maintaining sites-need to open communication and build partnerships.
46. River access points should be maintained and additional access points opened.\*
47. Look into acquisition of the 'Lime Rock' property-could have canoe/kayak, camping, mountain climbing, rappelling.
48. Need policing of river access points.
49. Need security at Donnaha Park.\*
50. Outdated facilities at Yadkin County Park need to be able to host sports tournaments that could bring in revenue and cannot do this due to the current condition of facilities.
51. County pool needs renovation, especially facilities (restrooms, changing rooms).\*
52. Need more activities for kids at the pool.
53. Would like to see concerts at the amphitheater in Yadkin County Park-have local vineyards as vendors.
54. Would like biking/hiking trails.\*
55. No recycling bins in Yadkin County Park.
56. Yadkin County Park is not being maintained-walking trail in bad shape.
57. Would like to see picnic areas along the river.
58. Would like horse and hiking trails at 5-D reservoir.\*
59. Would like to see names of Vietnam vets put on the memorial.
60. Need better restroom facilities.
61. Asking for citizen input is appreciated.\*
62. Battlefield needs to be preserved.
63. Would like more conservation of natural areas.
64. Shore-Styers Mill Park has been neglected and vandalized-County should seek citizen help and provide trash facilities to clean it up (Adopt-a-Park program).\*
65. Roads and river access points need to be fixed at Donnaha Park.
66. Need to paint over the graffiti on bridge at Donnaha Park.
67. Signs at Donnaha Park need to be fixed/replaced.
68. All river access points are in bad shape and leases have expired on some of them.\*
69. All facilities need regular maintenance and security.\*
70. Park caretakers are needed.
71. Fix the entrance at Shore-Styers Mill Park so people do not drive into it.
72. Need to have signs at Shore-Styers Mill Park stating hours of operation.
73. Would like biking trails at Yadkin County Park.
74. Impressed with the variety of recreational sites in County.
75. County has nice parks, but they need improvements.\*
76. Building at County pool needs to be replaced (restrooms, changing rooms).
77. Need County Park rangers to ensure trash is picked up.\*
78. There are not enough facilities on the east side of the County.
79. Restroom facilities have improved.
80. Would like a central soccer facility.



81. Would like a dog park.
82. Need information about who to contact with recreational issues- needs to be more obvious and accessible to Hispanic population.
83. Need recreation staff-all volunteers with no oversight or funding from County.\*
84. County should work closely with volunteers and sporting associations.
85. Appreciate County leadership and chance to give feedback.

### Yadkin County Public Recreation Meeting - August 22, 2011

#### Yadkin County Park

#### What recreational programs/activities should the County offer?

(\* Indicates answer given more than once)

- Need professional staff/better maintenance staff \*\*\*
- Need a budget (not based on registration fees)
- More diverse programs
- Skateboard parks \*\*
- Kayaking \*\*\*
- Canoeing \*\*\*
- Campgrounds \*\*\*
- Better maintenance of picnic areas
- Fishing tournaments
- Activities planning
- Safe park and picnic areas\*\*\*
- River access
- Horse and hiking trails at 5-D reservoir \*\*\*\*
- Maintain trails at County Park
- Horse trails at County Park (ponies)
- Hiking/nature walks
- Better advertising/information on County Parks and city Parks \*
- Advertise Richmond Hill
- Mountain to Sea Trail in Yadkin County (local group could adopt for maintenance)
- Yadkin River Access (Highway 601, Donnaha, Huntsville)
- Fishing and hiking at Donnaha
- Music/concerts/gathering places.

- Soccer fields for tournaments \*\*\*\*\*
- Lights for night games (soccer) \*\*\*\*\*
- Outdoor basketball blacktop
- Fix big soccer field.
- Better access to soccer fields
- Multi-use track with single track trails also around 5-D
- Campground beach area at 5-D
- Greenways
- Trails to IMBA standards
- Music venue at County Park (like Yadkinville Park)
- Lights in the lower parking lot of County Park
- County Park Pond needs to be managed for larger fish.
- Shooting range \*
- Fishing at watershed pond \*
- Soccer fields need to be better maintained a Styers Mill Park
- Need more soccer fields \*\*\*\*\*
- Boat ramps at 5-D \*
- Hiking/biking trails on Yadkin like New River trail
- Promote disc golf with wine tours.
- Volunteer maintenance organization for parks.
- Baseball and softball facilities capable of hosting tournaments \*\*
- Bike trails
- Hunting trails
- Handicapped access to fishing rest rooms
- Swimming pool
- Amphitheater for music – dancing and beach music like Mount Airy
- Hunting opportunities
- Duck hunting (like Reidsville) Handicap Accessible
- Maintain and improve existing facilities instead of building new.
- Indoor soccer practice facilities
- Camping areas along Yadkin River public access points
- Cooperation between groups working on trails (hiking, biking, canoeing/river)
- Improve the signage for parks.
- Update shelters \*
- Clean/maintain bike trail (nature trail) safer.

- Park rangers for County Park
- Better facilities for concerts
- Horseback riding/not biking on the same trail at 5-D.
- Dog park at County park \*
- Better access to soccer fields \*\*
- Vineyards involved in sponsoring music at parks.
- Make Styers Ferry safer for families.
- Bike trails/hiking/walking.
- Fence in 5-D reservoir for the safety of neighboring properties
- Add water fountains at County Park
- More separation between activities at County parks
- Lights in safe secure location cannot be burglarized.
- Pamphlets for Yadkin County recreation

#### Yadkin County Public Recreation Meeting – August 23, 2011

##### Yadkin Valley Senior Center

Question: What should Yadkin County be doing in terms of parks and recreation?

(\* indicates the number of multiple responses)

1. Programming for organized sports at Lila Swaim Park. \*
2. Expand Jonesville Greenway outside town limits. \*\*\*\*\*
3. Develop inventory/big picture of current parks (state and local).
4. Study demographics of potential users.
5. Develop river access near Jonesville Welcome Center. \*\*
6. More work on Jonesville Greenway. \*
7. Provide more information about parks and recreation facilities.
8. Develop horse riding trails around 5-D reservoir. \*\*
9. Develop multi-use trails (hitching posters, shelters, restrooms, bike racks, river trails). \*\*\*
10. Put more money into Lila Swaim Park. \*\*\*\*
11. Extend Jonesville Greenway to Pilot Mountain State Park. \*\*\*
12. Fix tennis courts. \*\*
13. Provide place to ride bikes. \*
14. Campgrounds/horse campgrounds (with facilities). \*\*
15. Purchase a private pool in East Bend for public use.
16. Add horse trail at County park. \*

17. Hire recreation director for Jonesville.
18. Provide transportation so more residents of County can utilize county facilities.
19. Build dog park.
20. Build more baseball/softball fields.
21. Complete smaller projects in the near term.
22. Make small/quick improvements to the parks.
23. Develop regulation track at County park.
24. Provide a place to fish.

#### Yadkin County Recreation Community Meeting - August 24, 2011

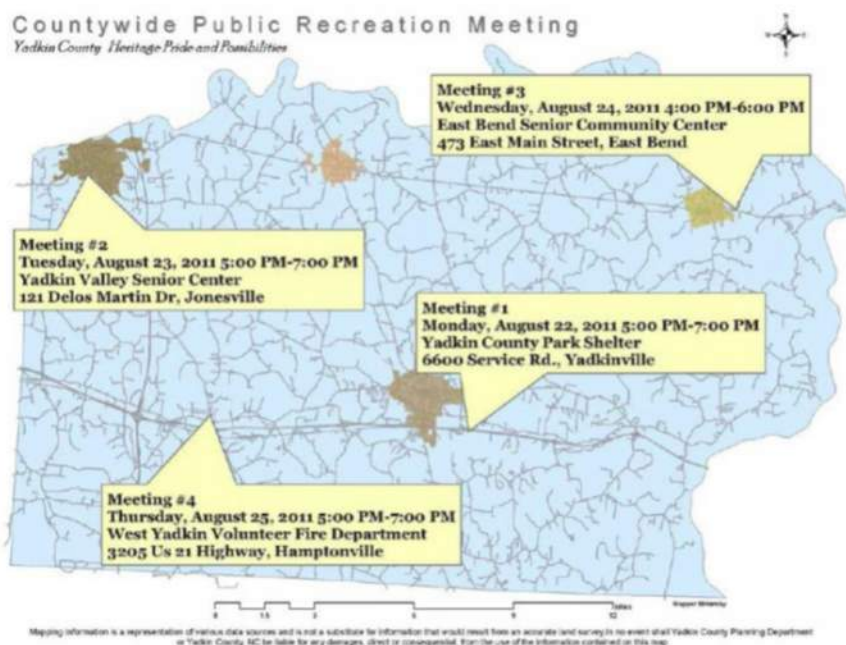
##### East Bend Senior Community Center

Question: What should Yadkin County be doing in terms of parks and recreation?

(\* Indicates number of multiple responses)

1. Programming for organized sports at Lila Swaim Park. \*
2. Expand Jonesville Greenway outside town limits. \*\*\*\*\*
3. Develop inventory/big picture of current parks (state and local).
4. Study demographics of potential users.
5. Develop river access near Jonesville Welcome Center. \*\*
6. More work on Jonesville Greenway. \*
7. Provide more information about parks and recreation facilities.
8. Develop horse riding trails around 5-D reservoir. \*\*
9. Develop multi-use trails (hitching posters, shelters, restrooms, bike racks, river trails). \*\*\*
10. Put more money into Lila Swaim Park. \*\*\*\*
11. Extend Jonesville Greenway to Pilot Mountain State Park. \*\*\*
12. Fix tennis courts. \*\*
13. Provide place to ride bikes. \*
14. Campgrounds/horse campgrounds (with facilities). \*\*
15. Purchase a private pool in East Bend for public use.
16. Add horse trail at County park. \*
17. Hire recreation director for Jonesville.
18. Provide transportation so more residents of County can utilize county facilities.
19. Build dog park.





20. Build more baseball/softball fields.
21. Complete smaller projects in the near term.
22. Make small/quick improvements to the parks.
23. Develop regulation track at County park.
24. Provide a place to fish.

#### Yadkin County Public Recreation Meeting – August 25, 2011 West Yadkin Volunteer Fire Department

Question: What should Yadkin County be doing in terms of parks and recreation?

(\* indicates the number of multiple responses)

1. Fishing at 5-D (as well as other parks). \*
2. Boat ramps/boat rentals at 5-D.
3. Swimming at 5-D. \*
4. Picnic shelters/stage at 5-D.
5. Camping at 5-D (up and down creek as well). \*\*
6. More parking at soccer field at county park.
7. Hiking trails (that loop around) at 5-D. \*\*\*

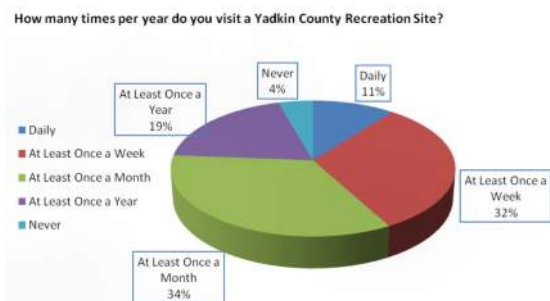
8. Horse riding trails (that loop around) at 5-D. \*\*\*\*
9. Economic impact study for county recreation facilities.
10. How much additional tax revenue brought in for every dollar spent on recreation? – study of charges at new 5-D park.
11. Survey and potential new industries/businesses about what they would want in the county to locate there.
12. Greenway \*12.
13. New soccer facility to enable county to host tournaments – need to add fields at county parks.
14. Kayaking on 5-D reservoir. \*\*
15. “Share the Road” signs for bicyclist’s safety – along Center Road.
16. Biking trails.
17. Availability of Boy Scout groups/civic groups to do improvement projects at facilities – replacement of railings at Styers Mill.
18. Hold 5K/paddle events to bring in revenue.1
19. More sporting activities year round
20. More soccer fields. \*
21. Trail head for horse trailers at 5-D.
22. Horse trails. \*
23. Maintenance of parks (including volunteers).
24. Greater access to Yadkin River (shorter distance between access points).
25. More soccer practice facilities in communities.
26. Hunting (duck) at 5-D have a restrictive permit system – (ducks unlimited would help construct blinds).
27. Hold community events (concerts on weekends).
28. Maintain a web presence for recreation events.
29. Safety at Styers Mill Park and other facilities.
30. Trails for 4-wheelers. \*
31. Animal show facility for 4-H/kids.
32. Bike events.

### Data Collected from Written Surveys 5

{Jonesville; Yadkinville; East Bend; Hamptonville public meetings}

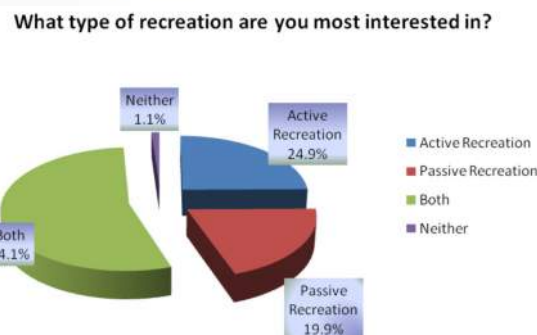
#### 1. How many times a year do you visit a Yadkin County recreation site?

Daily (19)  
At least once a week (57)  
At least once a month (62)  
At least once a year (35)  
Never (8)  
TOTAL RESPONSES = 181



#### 2. I am interested in?

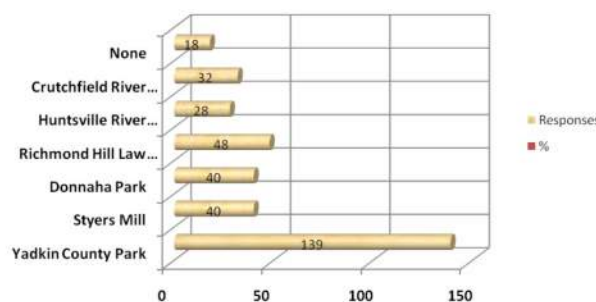
Active recreation (45)  
Passive recreation (36)  
Both (98)  
Neither (2)  
TOTAL RESPONSES = 181



#### 3. Please check if you have visited in the last year:

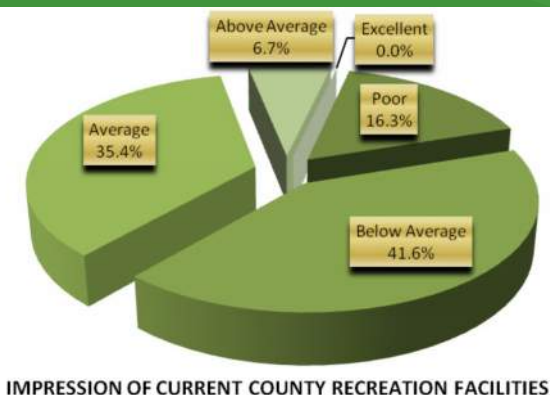
Yadkin County Park (139)	Huntsville River Access (28)
Styers Mill (40)	Crutchfield River Access (32)
Donnaha Park (40)	None (18)
Richmond Hill Law School (48)	

Which Recreation Sites Did You Visit In the Last Year?



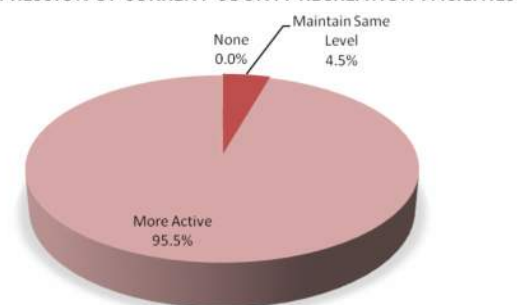
#### 4. What is your Impression of the Current Recreation Facilities Throughout the County?

Poor (29)  
Below Average (74)  
Average (63)  
Above Average (12)  
Excellent (0)  
Total Responses (178)



#### 5. What Role Should the County Take in Providing Parks and Programs in the Future?

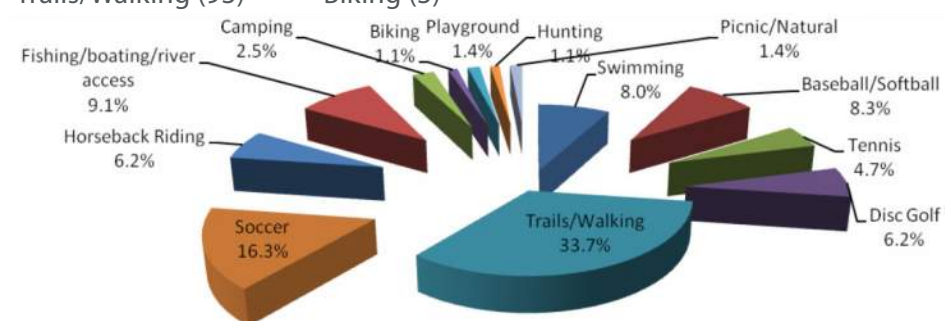
None (0)  
Maintain same level (8)  
More active (171)  
Total Responses (179)



What Role Should the County Take in Providing Parks and Recreation Programs in the Future?

#### 6. What is Your Favorite Activity at any County Recreation Site?

Swimming (22)	Soccer (45)	Playground (4)*
Baseball/Softball (23)	Horseback Riding (17)*	Hunting (3)*
Tennis (13)	Fishing/Boating (25)*	Picnic/natural areas (4)*
Disc Golf (17)	Camping (7)*	*Write-in
Trails/Walking (93)	Biking (3)*	



FAVORITE RECREATION ACTIVITY AT COUNTY SITES



## *Passive Recreation vs. Active Recreation*



## Passive Recreation vs. Active Recreation

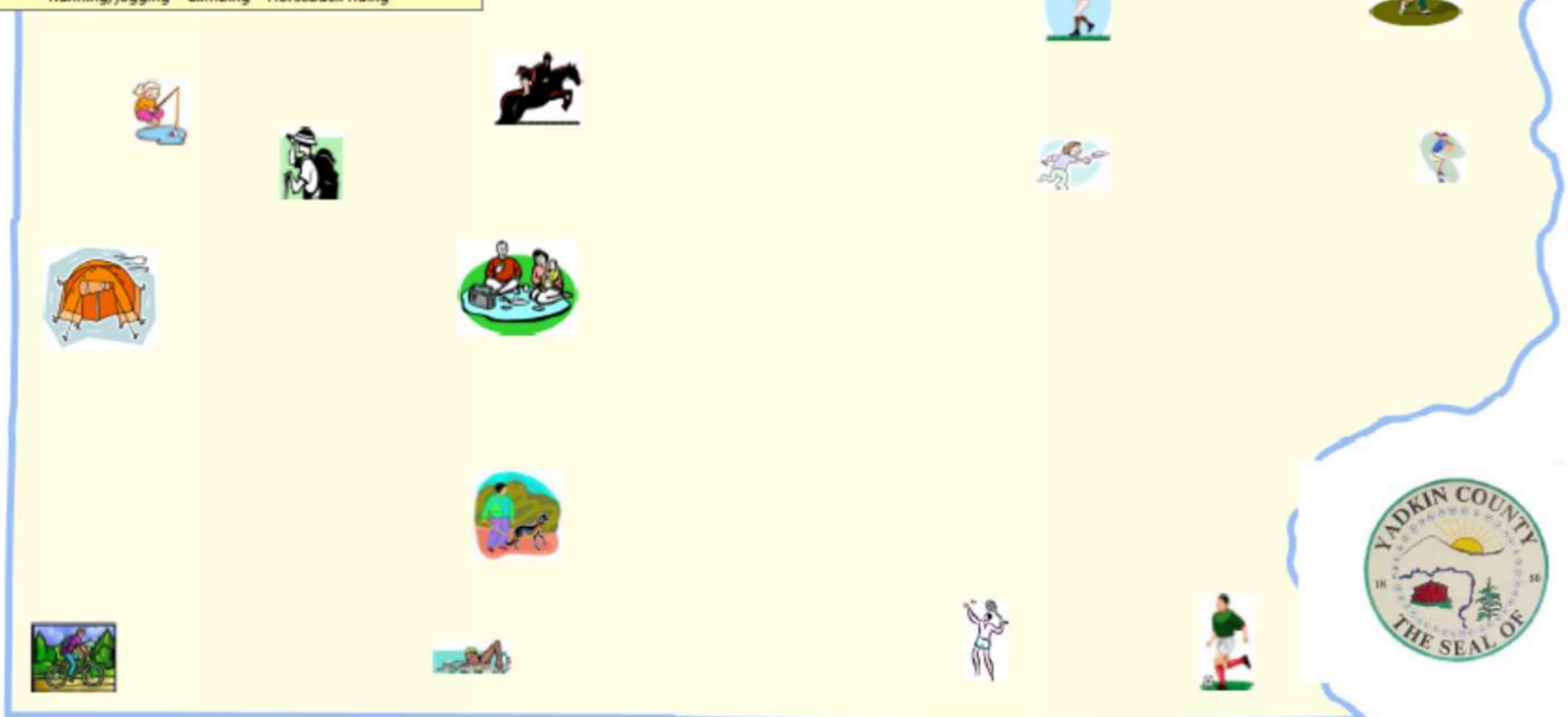
What is Passive Recreation??? Passive Recreation refers to recreational activities that do not require prepared facilities like sports fields. Passive recreational activities place minimal stress on a site's resources; as a result, they can provide ecosystem service benefits and are highly compatible with natural resource protection.

### Examples of Passive Recreational Activities

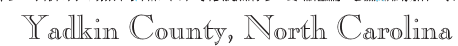
- Hunting • Camping • Hiking • Wildlife viewing
- Picnicking • Walking • Bird watching • Fishing
- Historic and archaeological exploration
- Swimming • Cross-country skiing • Bicycling
- Running/jogging • Climbing • Horseback riding

Active recreation refers to a structured individual or team activity that requires the use of special facilities, courses, fields, or equipment.

- Examples of Active Recreational Activities? • Baseball • Football  
• Soccer • Golf • Tennis • Skiing • Skateboarding







## November 8, 2011